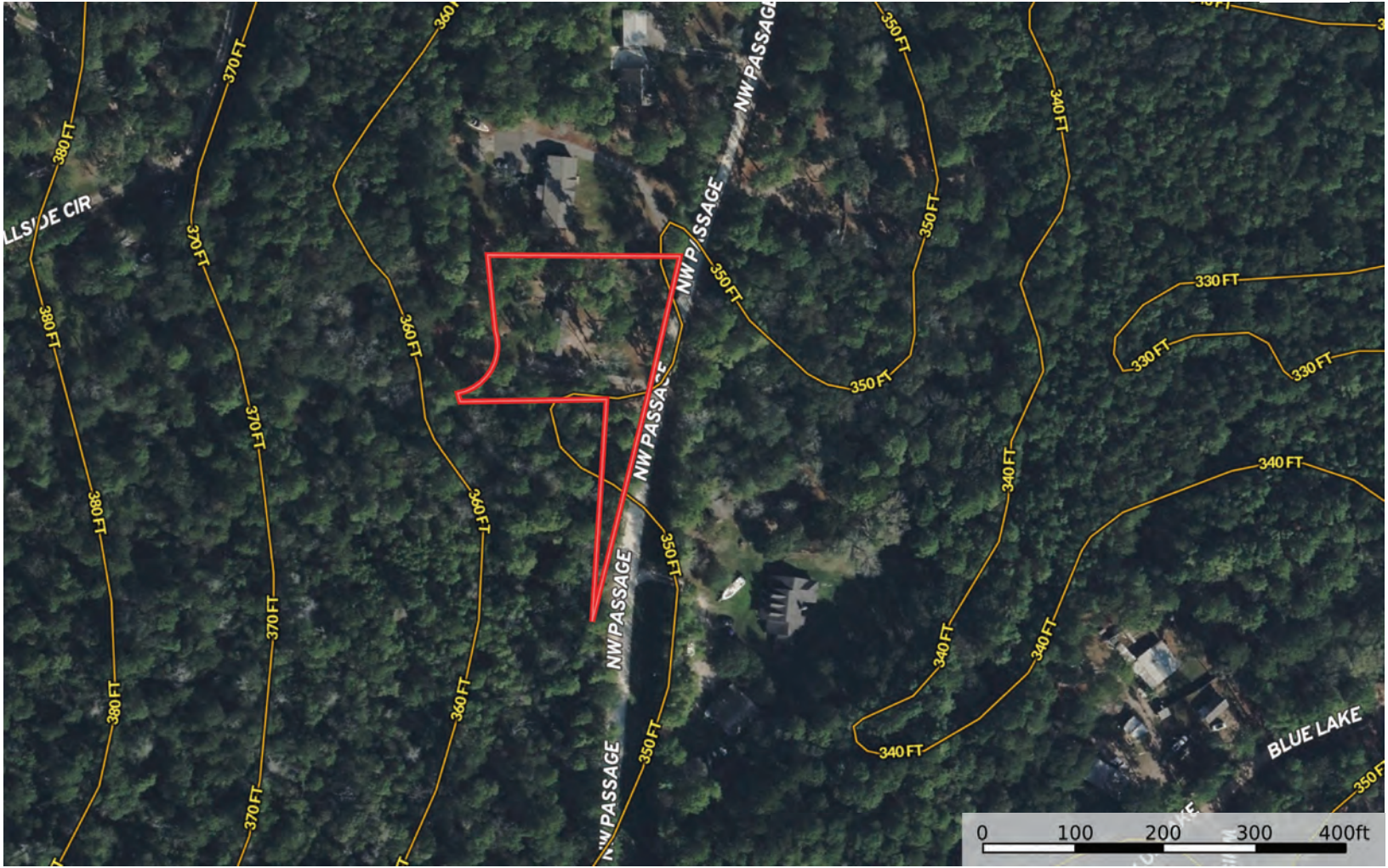


14366 Northwest PSGE
Texas, AC +/-



 Boundary

14366 Northwest PSGE
Texas, AC +/-




Boundary

14366 Northwest PSGE
Texas, AC +/-



Brazos Land Company
P: (936)873-4000 www.brazoslandco.com 15358 SH 30, Anderson, TX 77830


 The information contained herein was obtained from sources deemed to be reliable. Land id® Services makes no warranties or guarantees as to the completeness or accuracy thereof.


14366 Northwest PSGE
Texas, AC +/-



 Boundary

Brazos Land Company
P: (936)873-4000 www.brazoslandco.com 15358 SH 30, Anderson, TX 77830

 The information contained herein was obtained from sources deemed to be reliable. Land id® Services makes no warranties or guarantees as to the completeness or accuracy thereof.

|  Boundary 0.83 ac

SOIL CODE	SOIL DESCRIPTION	ACRES	%	CPI	NCCPI	CAP
AnC	Annona fine sandy loam, 1 to 5 percent slopes	0.83	100	0	34	4e
TOTALS		0.83(*)	100%	-	34.0	4

(*) Total acres may differ in the second decimal compared to the sum of each acreage soil. This is due to a round error because we only show the acres of each soil with two decimal.

Capability Legend

Increased Limitations and Hazards

Decreased Adaptability and Freedom of Choice Users

Land, Capability

	1	2	3	4	5	6	7	8
'Wild Life'	•	•	•	•	•	•	•	•
Forestry	•	•	•	•	•	•	•	
Limited	•	•	•	•	•	•	•	
Moderate	•	•	•	•	•	•		
Intense	•	•	•	•	•			
Limited	•	•	•	•				
Moderate	•	•	•					
Intense	•	•						
Very Intense	•							

Grazing Cultivation

(c) climatic limitations (e) susceptibility to erosion

(s) soil limitations within the rooting zone (w) excess of water