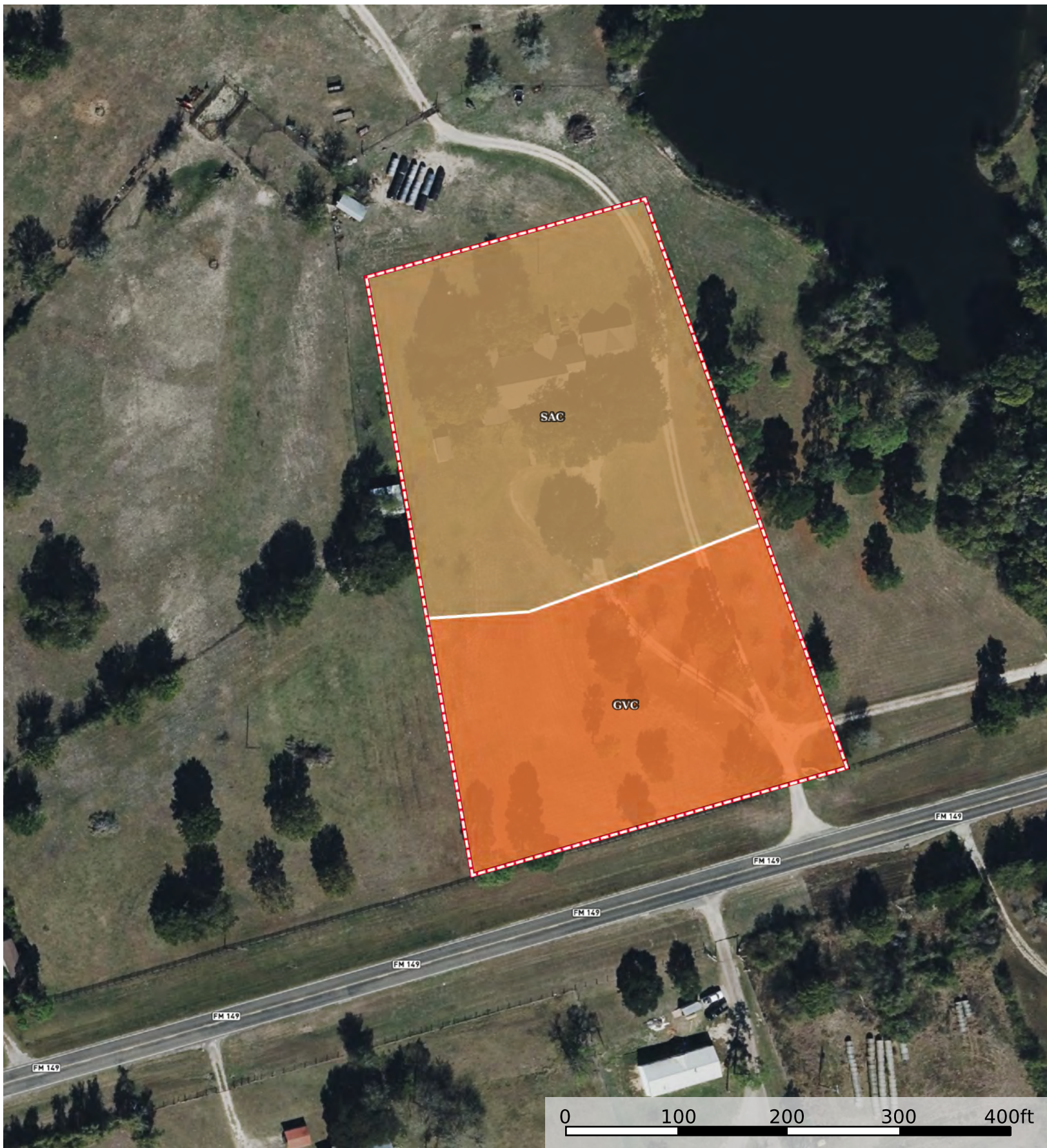




Boundary





Boundary

Boundary 3.82 ac

SOIL CODE	SOIL DESCRIPTION	ACRES	%	CPI	NCCPI	CAP
SaC	Shalba fine sandy loam, 1 to 5 percent slopes	2.12	55.35	0	21	4s
GvC	Greenvine clay, 1 to 5 percent slopes	1.7	44.39	0	36	3e
TOTALS		3.82(*)	100%	-	27.6	3.55

(*) Total acres may differ in the second decimal compared to the sum of each acreage soil. This is due to a round error because we only show the acres of each soil with two decimal.

