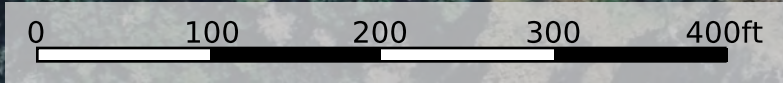
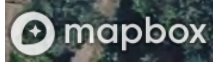
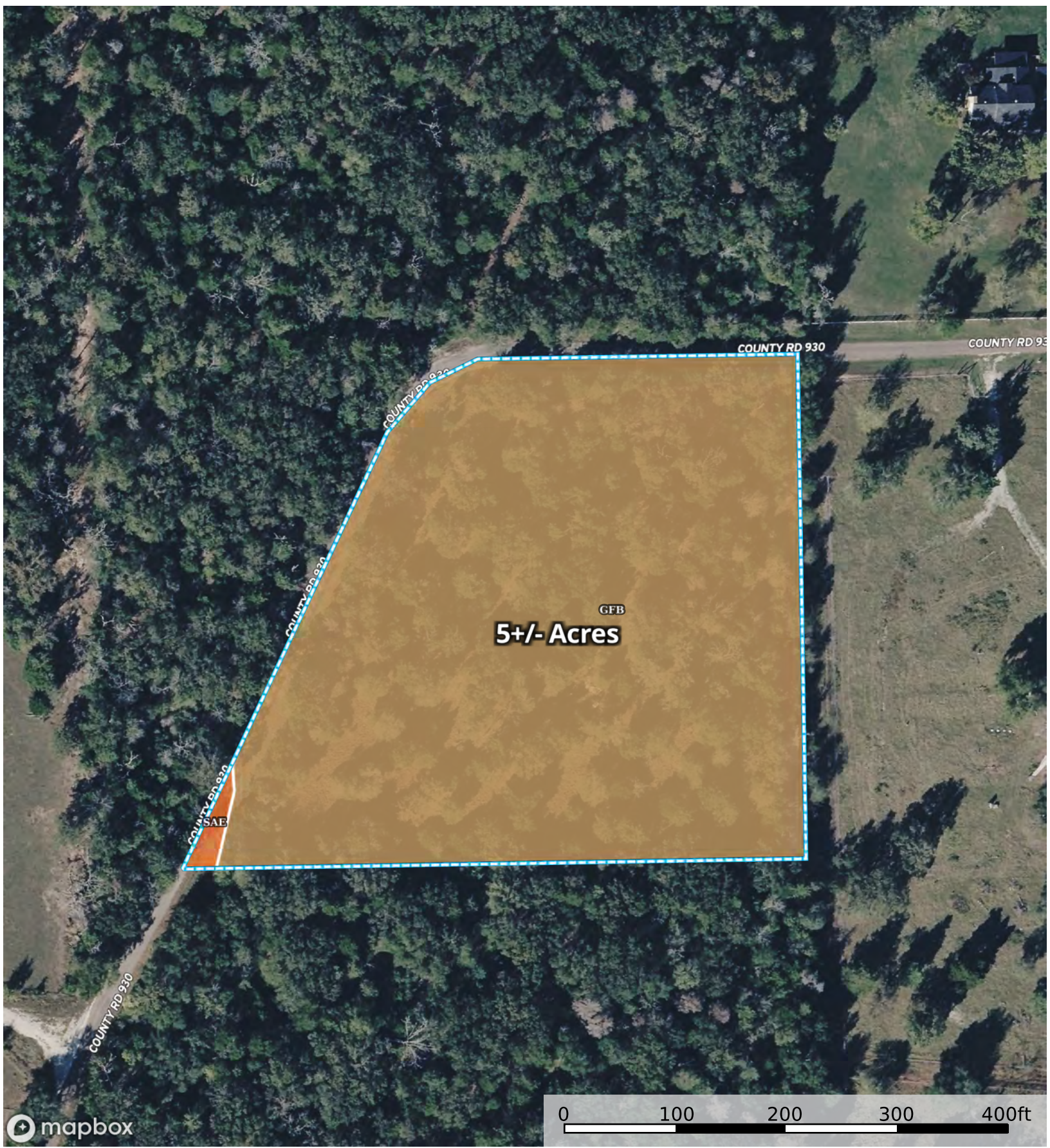


5 Acres



5 Acres 4.71 ac

SOIL CODE	SOIL DESCRIPTION	ACRES	%	CPI	NCCPI	CAP
GfB	Gasil fine sandy loam, 1 to 5 percent slopes	4.67	99.15	0	63	3e
SaE	Silawa fine sandy loam, 5 to 12 percent slopes	0.04	0.85	0	43	6e
TOTALS		4.71(*)	100%	-	62.83	3.03

(\*) Total acres may differ in the second decimal compared to the sum of each acreage soil. This is due to a round error because we only show the acres of each soil with two decimal.

