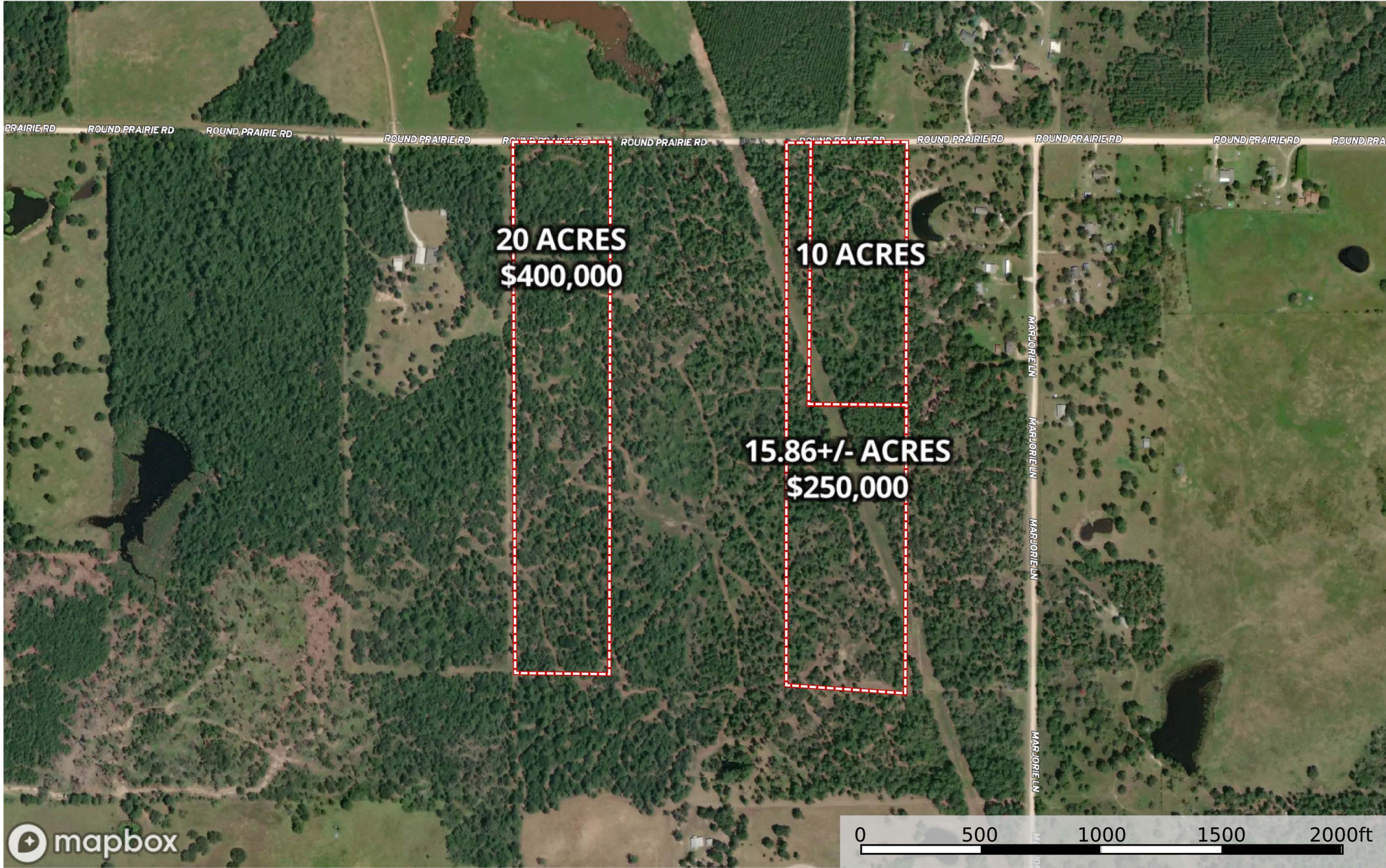


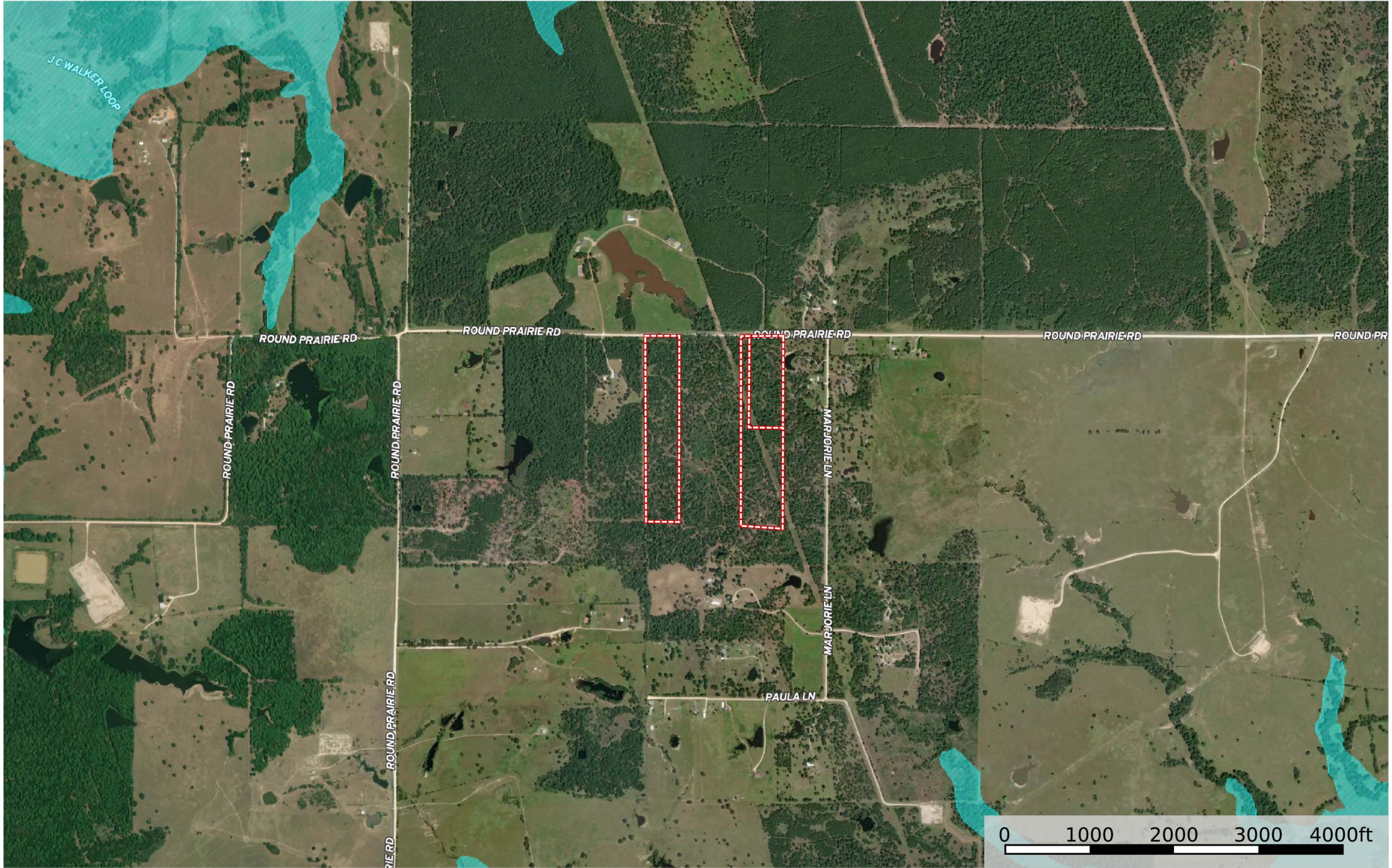
20 Acres Round Prairie Rd  
Walker County, Texas, AC +/-



Boundary



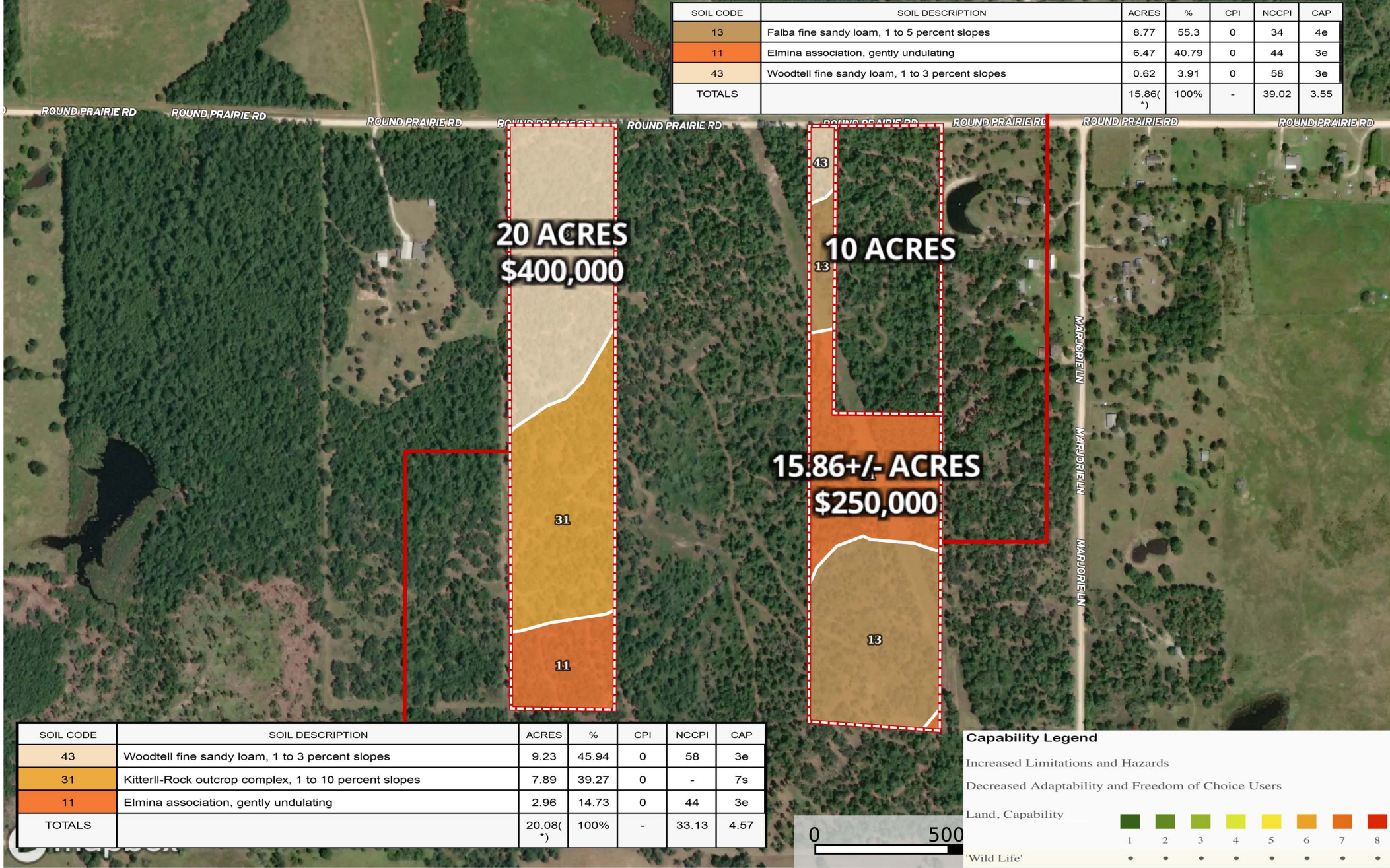
20 Acres Round Prairie Rd  
Walker County, Texas, AC +/-



- Boundary
- 100 Year Floodplain
- 500 Year Floodplain
- Floodway
- Special
- Unmapped/ Not Included



20 Acres Round Prairie Rd  
Walker County, Texas, AC +/-



SOIL CODE	SOIL DESCRIPTION	ACRES	%	CPI	NCCPI	CAP
13	Falba fine sandy loam, 1 to 5 percent slopes	8.77	55.3	0	34	4e
11	Elmina association, gently undulating	6.47	40.79	0	44	3e
43	Woodtell fine sandy loam, 1 to 3 percent slopes	0.62	3.91	0	58	3e
TOTALS		15.86(*)	100%	-	39.02	3.55

SOIL CODE	SOIL DESCRIPTION	ACRES	%	CPI	NCCPI	CAP
43	Woodtell fine sandy loam, 1 to 3 percent slopes	9.23	45.94	0	58	3e
31	Kitterli-Rock outcrop complex, 1 to 10 percent slopes	7.89	39.27	0	-	7s
11	Elmina association, gently undulating	2.96	14.73	0	44	3e
TOTALS		20.08(*)	100%	-	33.13	4.57

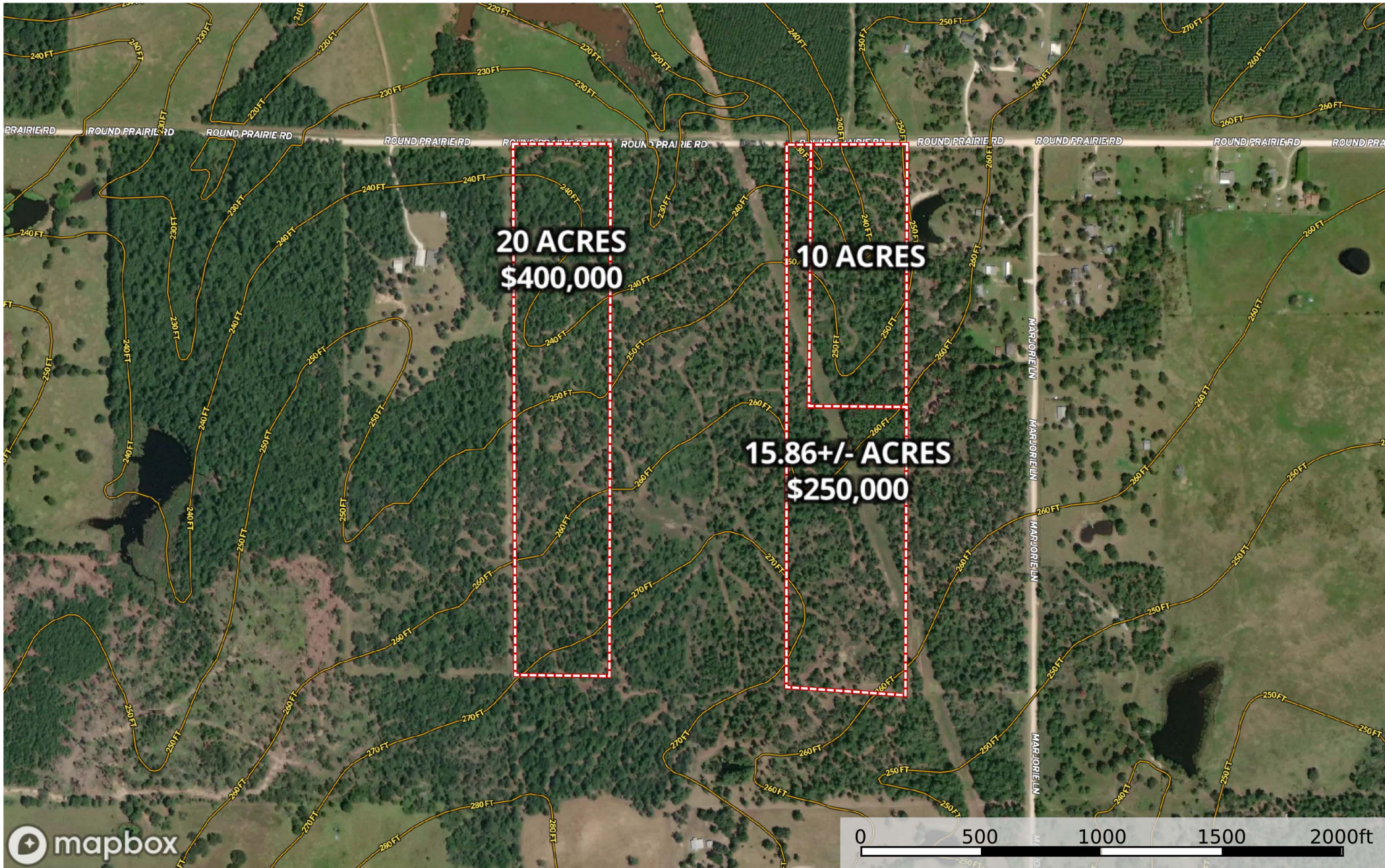
Capability Legend

Increased Limitations and Hazards  
Decreased Adaptability and Freedom of Choice Users

Land, Capability	1	2	3	4	5	6	7	8
'Wild Life'	•	•	•	•	•	•	•	•
Forestry	•	•	•	•	•	•	•	•
Limited	•	•	•	•	•	•	•	•
Moderate	•	•	•	•	•	•	•	•
Intense	•	•	•	•	•	•	•	•
Limited	•	•	•	•	•	•	•	•
Moderate	•	•	•	•	•	•	•	•
Intense	•	•	•	•	•	•	•	•
Very Intense	•	•	•	•	•	•	•	•



**20 Acres Round Prairie Rd**  
Walker County, Texas, AC +/-



Boundary