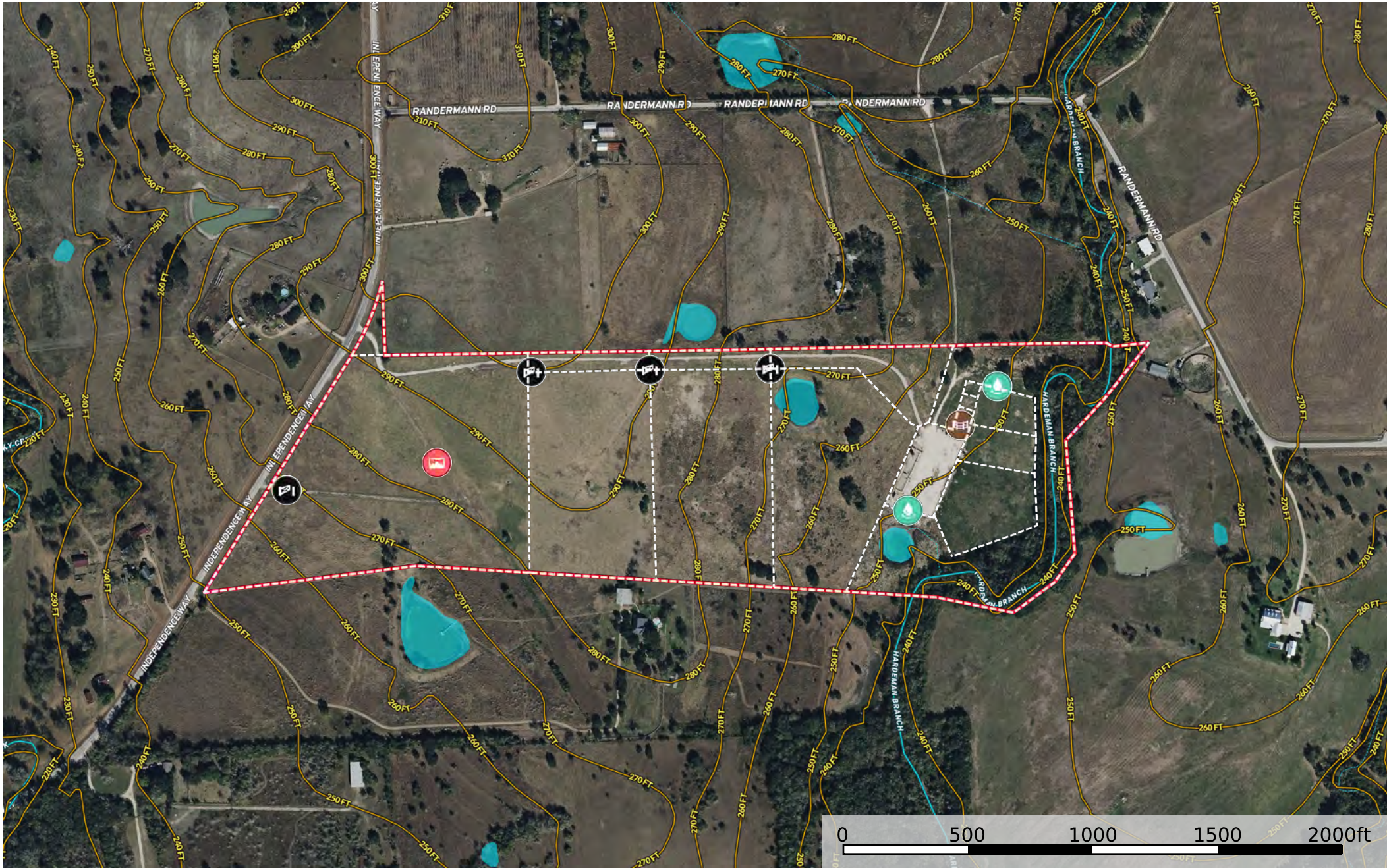




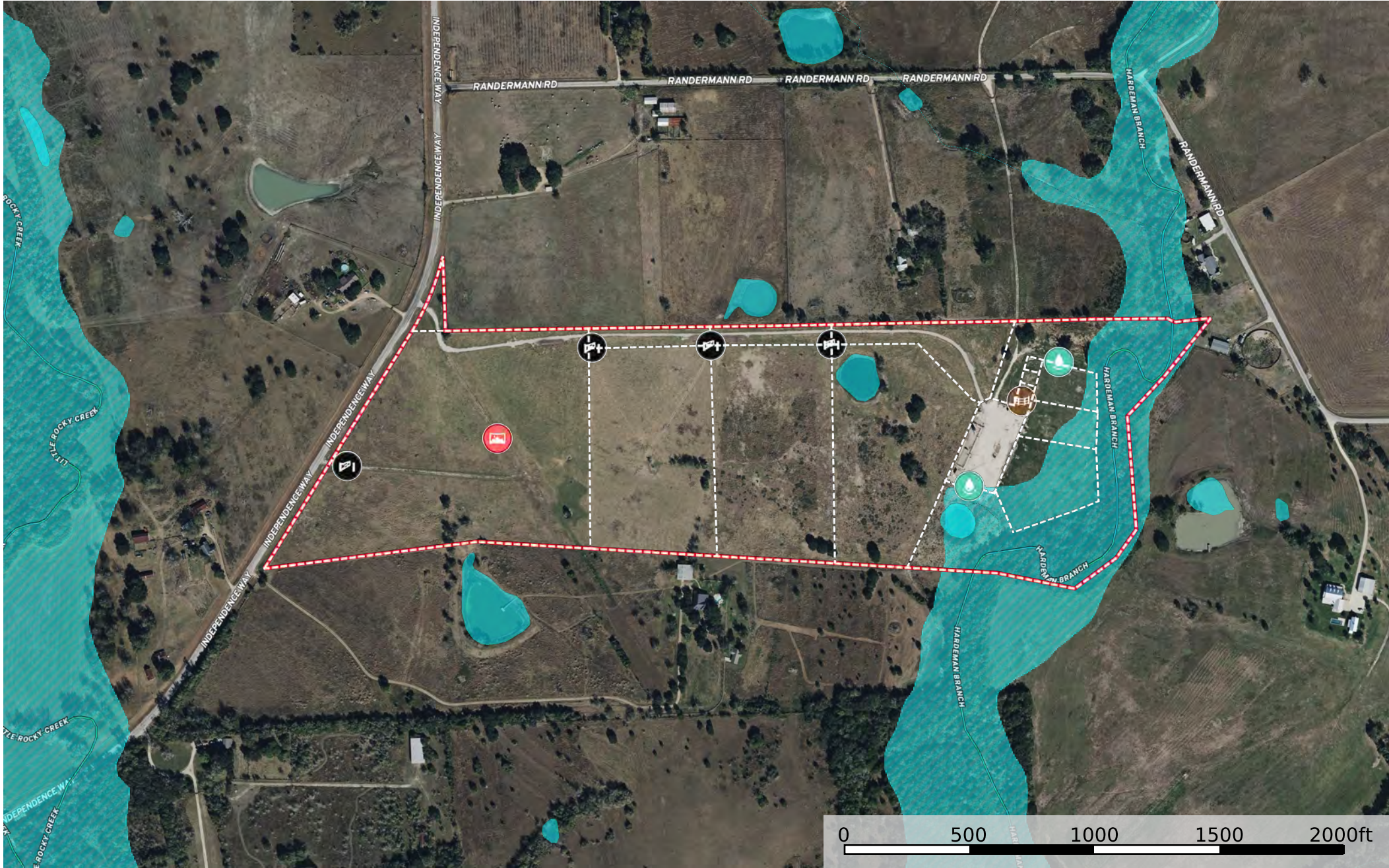
- Panoramic View
- Water Well
- Pens
- Gate
- Fence
- Boundary
- Stream, Intermittent
- River/Creek
- Water Body





- Panoramic View
- Water Well
- Pens
- Gate
- Fence
- Boundary
- Stream, Intermittent
- River/Creek
- Water Body





Panoramic View

Water Well

Pens

Gate

Fence

Boundary

100 Year Floodplain

500 Year Floodplain

Floodway

Special

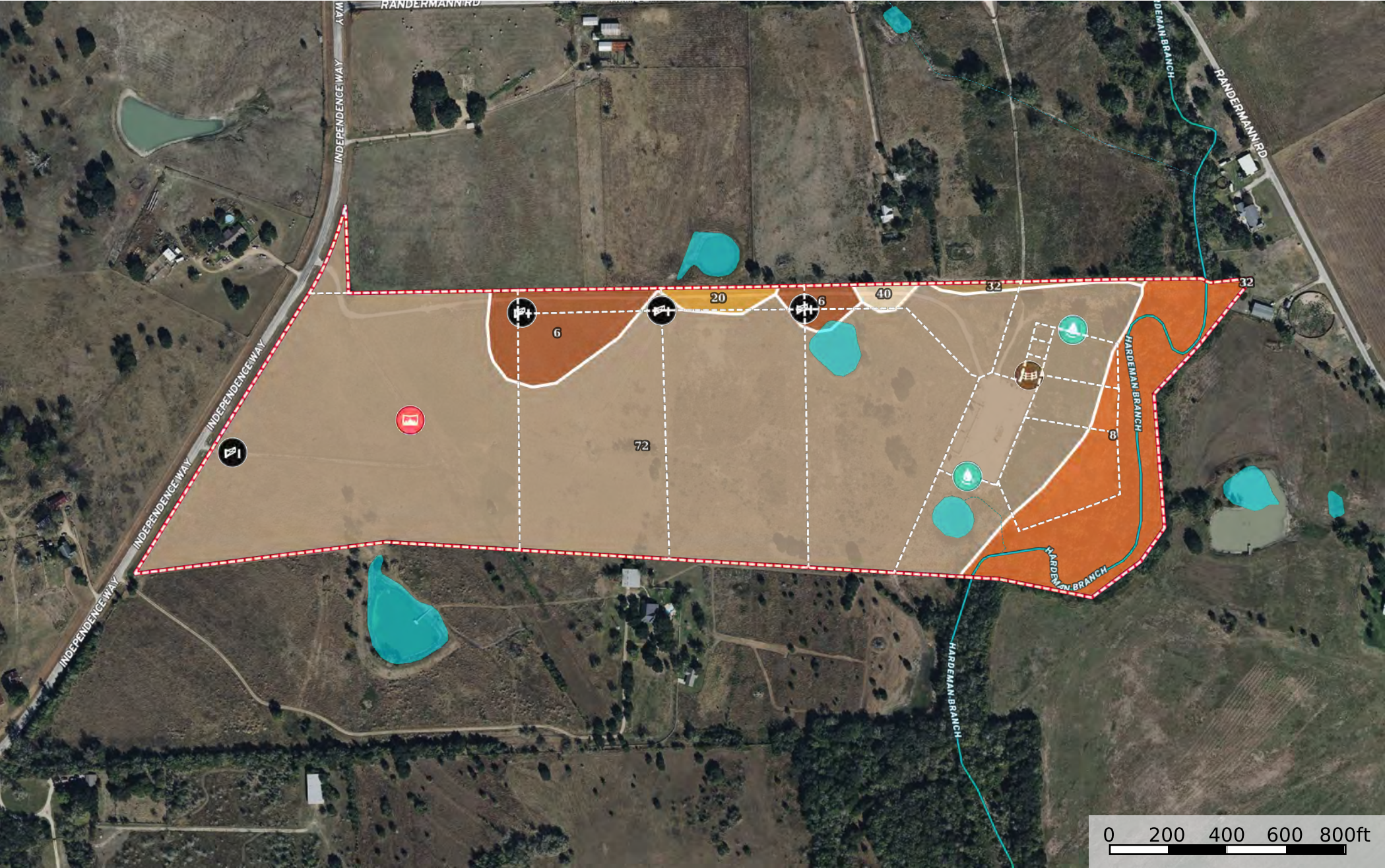
Unmapped/Not Included

Stream, Intermittent

River/Creek

Water Body





- Panoramic View
- Water Well
- Pens
- Gate
- Fence
- Boundary
- Stream, Intermittent
- River/Creek
- Water Body



|  Boundary 69.62 ac

SOIL CODE	SOIL DESCRIPTION	ACRES	%	CPI	NCCPI	CAP
72	Wilson clay loam, 1 to 3 percent slopes	56.11	80.59	0	40	3e
8	Bosque clay loam, frequently flooded	8.46	12.15	0	52	5w
6	Bleiblerville clay, 1 to 3 percent slopes	3.75	5.39	0	40	3e
20	Carbengle clay loam, 5 to 8 percent slopes	0.62	0.89	0	42	4e
32	Frelsburg clay, 3 to 5 percent slopes	0.36	0.52	0	37	3e
40	Klump loamy sand, 3 to 5 percent slopes	0.32	0.46	0	43	3e
TOTALS		69.62(*)	100%	-	41.47	3.25









(\*) Total acres may differ in the second decimal compared to the sum of each acreage soil. This is due to a round error because we only show the acres of each soil with two decimal.

## Capability Legend

Increased Limitations and Hazards

Decreased Adaptability and Freedom of Choice Users

Land, Capability

								
	1	2	3	4	5	6	7	8
'Wild Life'	•	•	•	•	•	•	•	•
Forestry	•	•	•	•	•	•	•	
Limited	•	•	•	•	•	•	•	
Moderate	•	•	•	•	•	•		
Intense	•	•	•	•	•			
Limited	•	•	•	•				
Moderate	•	•	•					
Intense	•	•						
Very Intense	•							

## Grazing Cultivation

(c) climatic limitations (e) susceptibility to erosion

(s) soil limitations within the rooting zone (w) excess of water