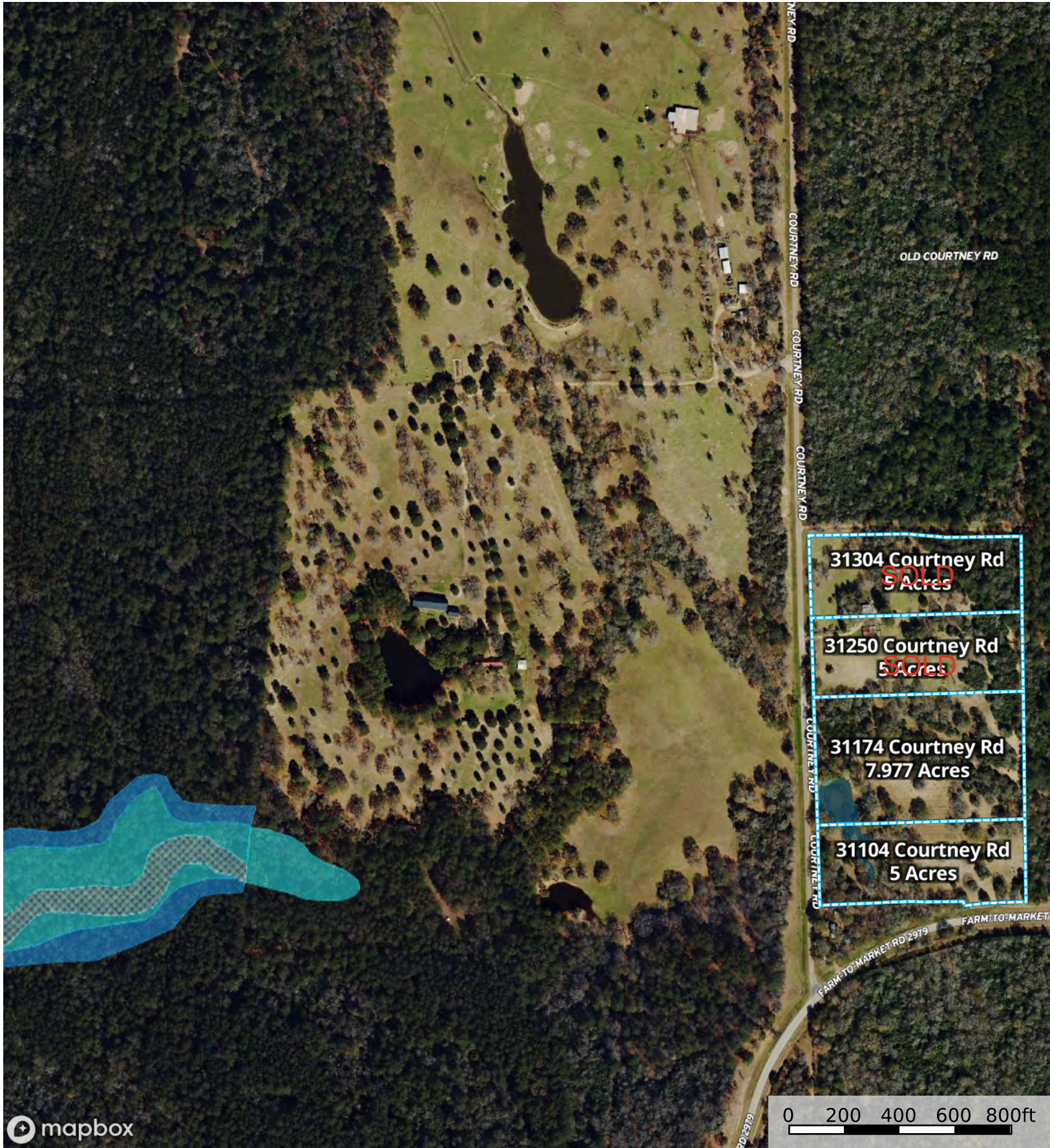




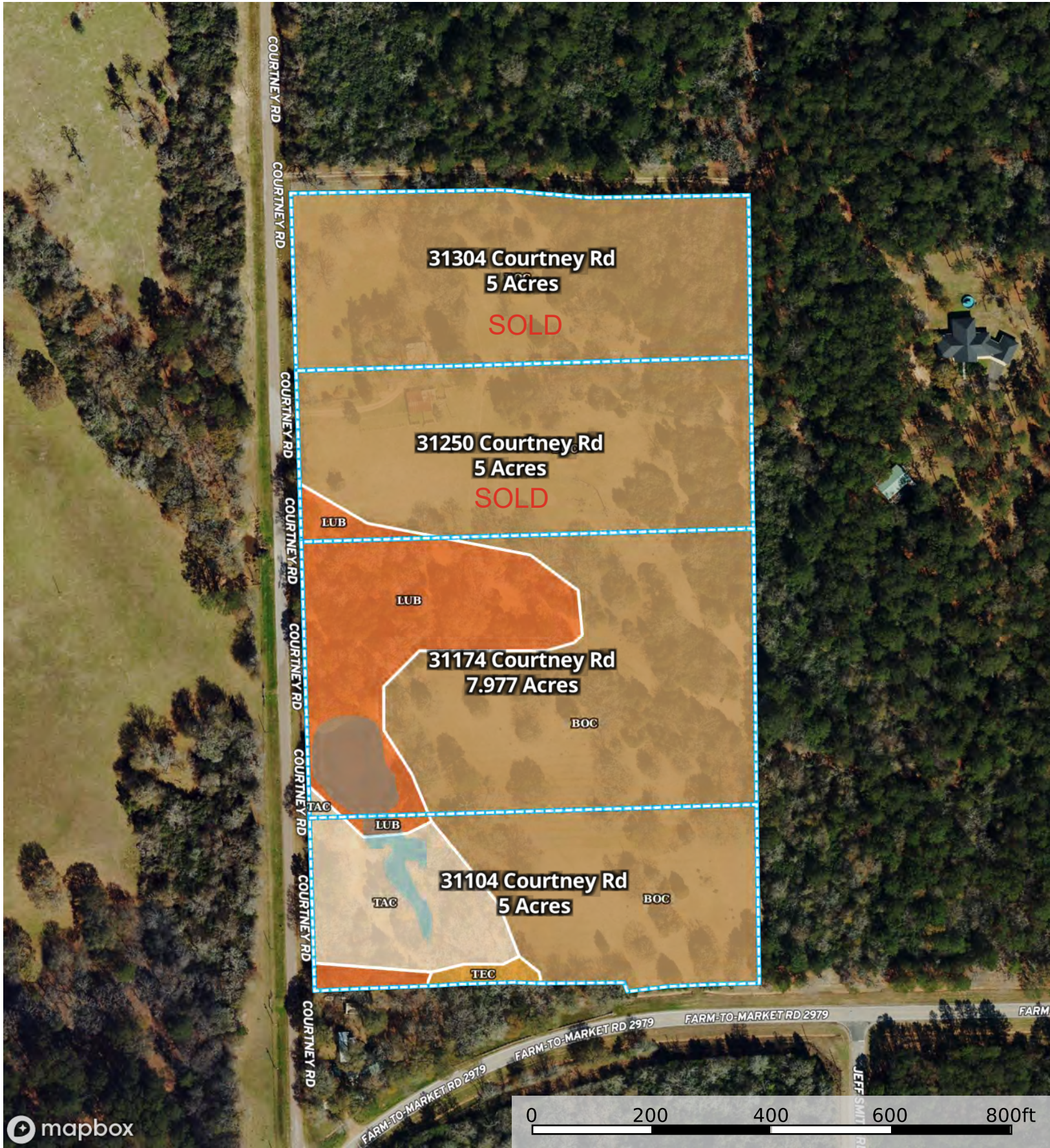
- Pond / Tank
- Lot 4
- Lot 3
- Lot 2
- Lot 1



Pond / Tank Lot 4 Lot 3 Lot 2 Lot 1



- Pond / Tank
- Lot 4
- Lot 3
- Lot 2
- Lot 1
- 100 Year Floodplain
- 500 Year Floodplain
- Floodway
- Special
- Unmapped/ Not Included



|  All Polygons 22.98 ac

SOIL CODE	SOIL DESCRIPTION	ACRES	%	CPI	NCCPI	CAP
BoC	Boy loamy fine sand, 1 to 5 percent slopes	18.03	78.46	0	24	3s
LuB	Lufkin fine sandy loam, 1 to 3 percent slopes	3.22	14.01	0	38	3e
TaC	Tabor fine sandy loam, 1 to 5 percent slopes	1.6	6.96	0	38	4e
TeC	Tremona loamy fine sand, 1 to 5 percent slopes	0.13	0.57	0	46	4e
TOTALS		22.98(*)	100%	-	27.06	3.08

(*) Total acres may differ in the second decimal compared to the sum of each acreage soil. This is due to a round error because we only show the acres of each soil with two decimal.

|  Lot 1 5 ac

SOIL CODE	SOIL DESCRIPTION	ACRES	%	CPI	NCCPI	CAP
BoC	Boy loamy fine sand, 1 to 5 percent slopes	5	100	0	24	3s
TOTALS		5(*)	100%	-	24.0	3

(*) Total acres may differ in the second decimal compared to the sum of each acreage soil. This is due to a round error because we only show the acres of each soil with two decimal.

|  Lot 2 5.0 ac

SOIL CODE	SOIL DESCRIPTION	ACRES	%	CPI	NCCPI	CAP
BoC	Boy loamy fine sand, 1 to 5 percent slopes	4.8	96	0	24	3s
LuB	Lufkin fine sandy loam, 1 to 3 percent slopes	0.2	4	0	38	3e
TOTALS		5.0(*)	100%	-	24.56	2

(*) Total acres may differ in the second decimal compared to the sum of each acreage soil. This is due to a round error because we only show the acres of each soil with two decimal.

|  Lot 3 7.98 ac

SOIL CODE	SOIL DESCRIPTION	ACRES	%	CPI	NCCPI	CAP
BoC	Boy loamy fine sand, 1 to 5 percent slopes	5.17	64.79	0	24	3s
LuB	Lufkin fine sandy loam, 1 to 3 percent slopes	2.78	34.84	0	38	3e
TaC	Tabor fine sandy loam, 1 to 5 percent slopes	0.03	0.38	0	38	4e
TOTALS		7.98(*)	100%	-	28.93	3.0

(*) Total acres may differ in the second decimal compared to the sum of each acreage soil. This is due to a round error because we only show the acres of each soil with two decimal.

|  Lot 4 5.0 ac

SOIL CODE	SOIL DESCRIPTION	ACRES	%	CPI	NCCPI	CAP
BoC	Boy loamy fine sand, 1 to 5 percent slopes	3.06	61.2	0	24	3s
TaC	Tabor fine sandy loam, 1 to 5 percent slopes	1.57	31.4	0	38	4e

LuB	Lufkin fine sandy loam, 1 to 3 percent slopes	0.24	4.8	0	38	3e
TeC	Tremona loamy fine sand, 1 to 5 percent slopes	0.13	2.6	0	46	4e
TOTALS		5.0(*)	100%	-	29.64	3.34









(*) Total acres may differ in the second decimal compared to the sum of each acreage soil. This is due to a round error because we only show the acres of each soil with two decimal.

Capability Legend

Increased Limitations and Hazards

Decreased Adaptability and Freedom of Choice Users

Land, Capability

								
	1	2	3	4	5	6	7	8
'Wild Life'	•	•	•	•	•	•	•	•
Forestry	•	•	•	•	•	•	•	
Limited	•	•	•	•	•	•	•	
Moderate	•	•	•	•	•	•		
Intense	•	•	•	•	•			
Limited	•	•	•	•				
Moderate	•	•	•					
Intense	•	•						
Very Intense	•							

Grazing Cultivation

(c) climatic limitations (e) susceptibility to erosion

(s) soil limitations within the rooting zone (w) excess of water