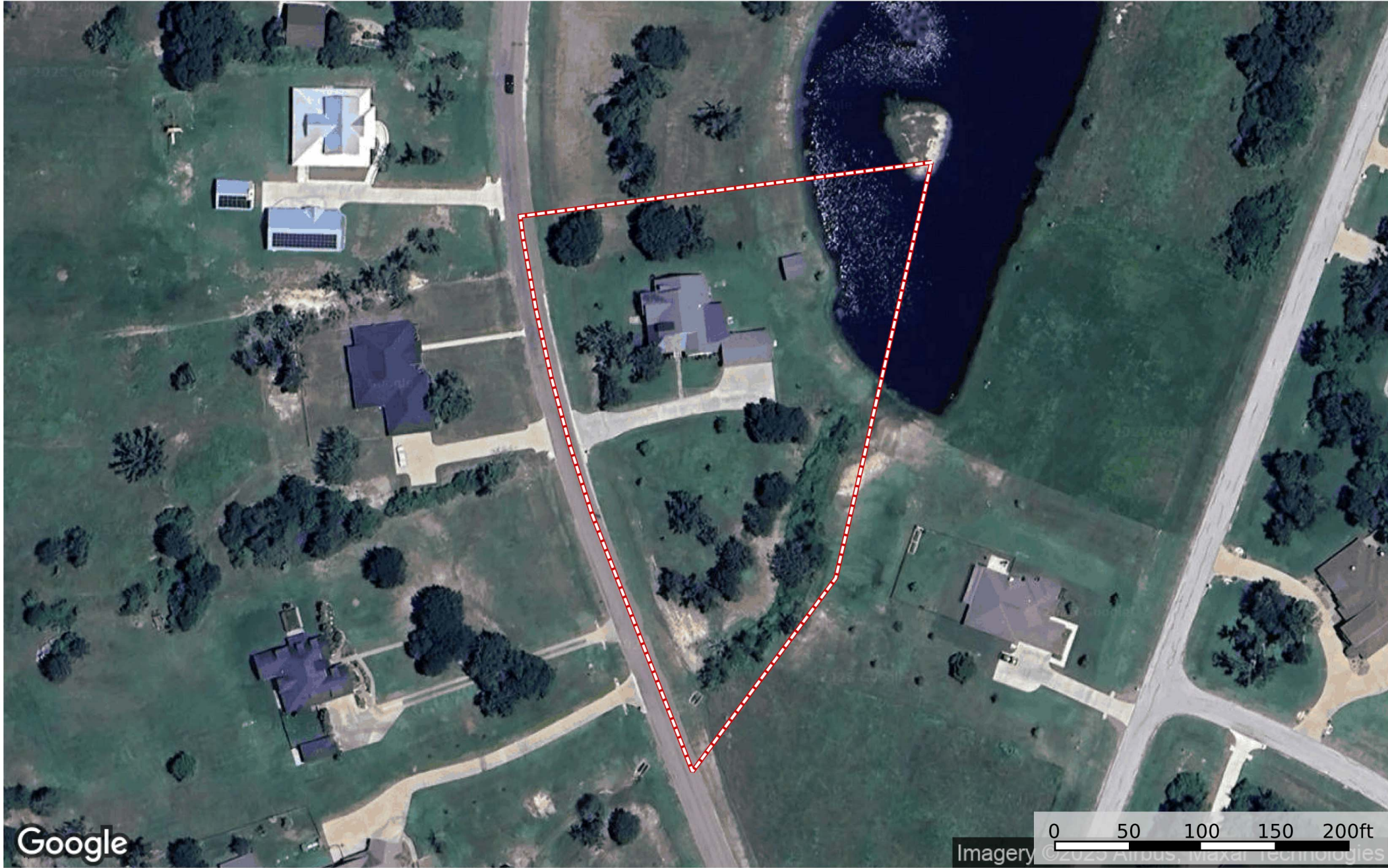
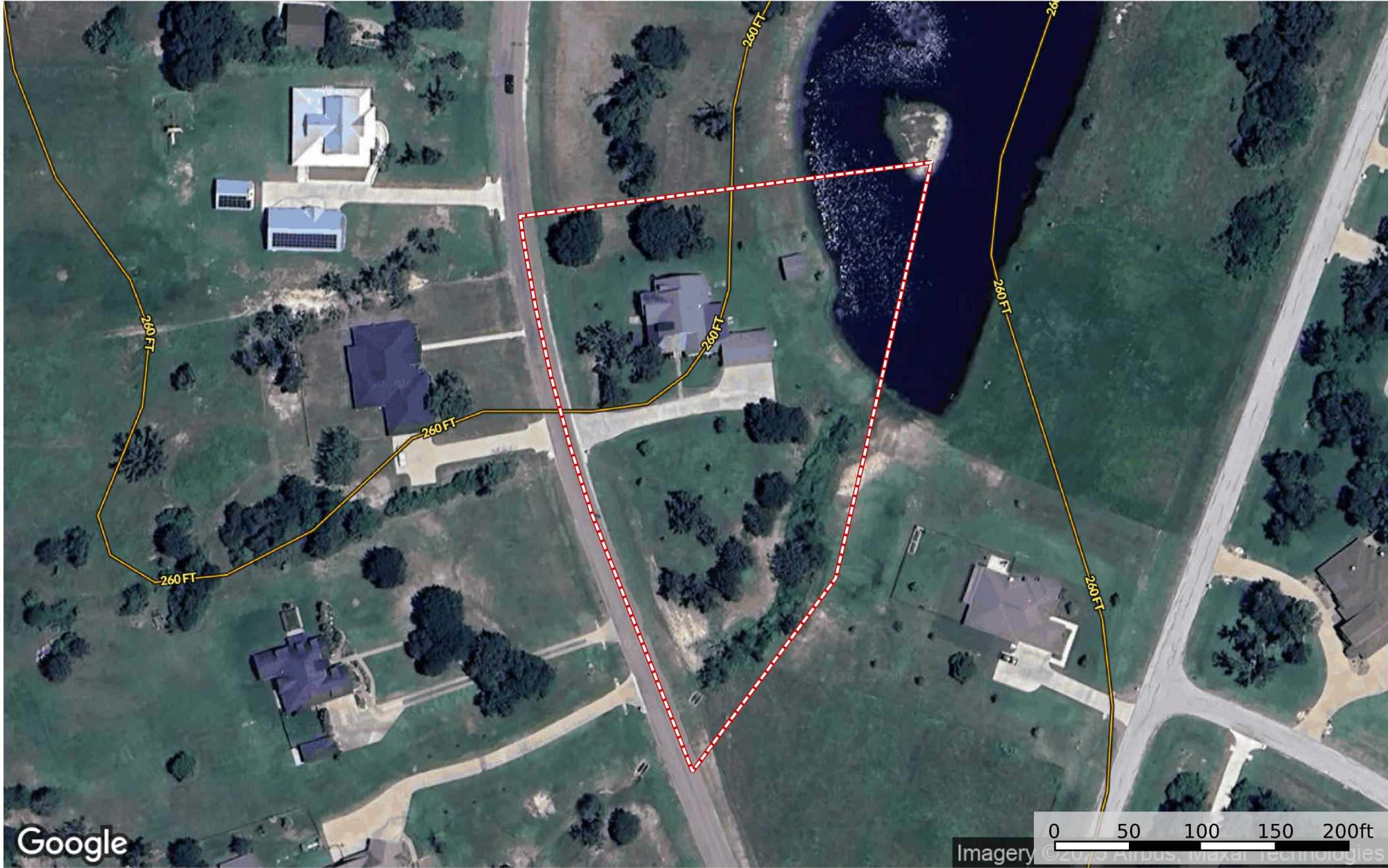
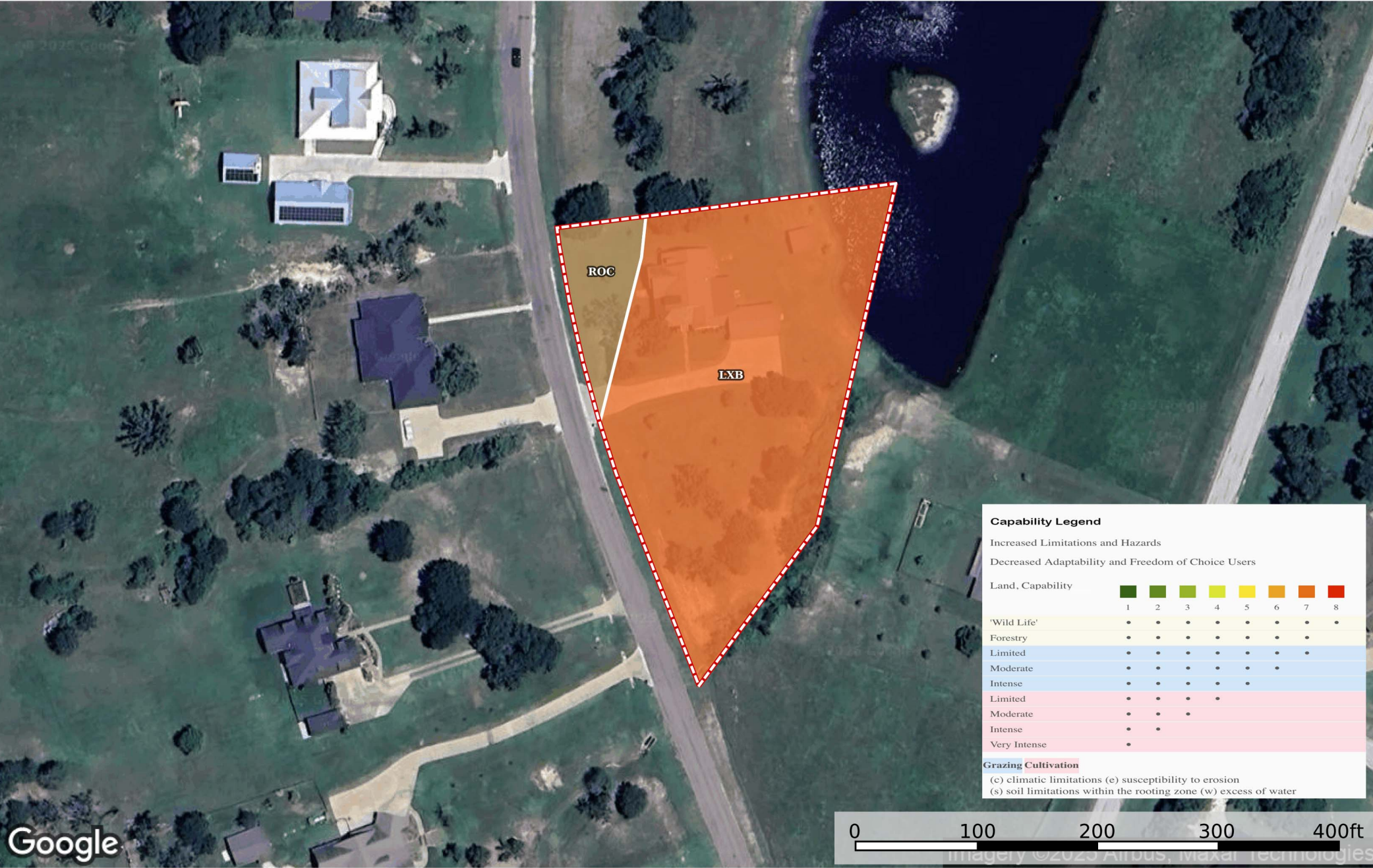


10560 St. John Drive, Iola, TX
Texas, AC +/-





 Boundary



SOIL CODE	SOIL DESCRIPTION	ACRES	%	CPI	NCCPI	CAP
LxB	Lufkin-Rader complex, gently undulating	1.4	89.74	0	43	3e
RoC	Robco-Tanglewood complex, 1 to 5 percent slopes	0.15	9.62	0	48	3e
TOTALS		1.55(*)	100%	-	43.21	3.0

