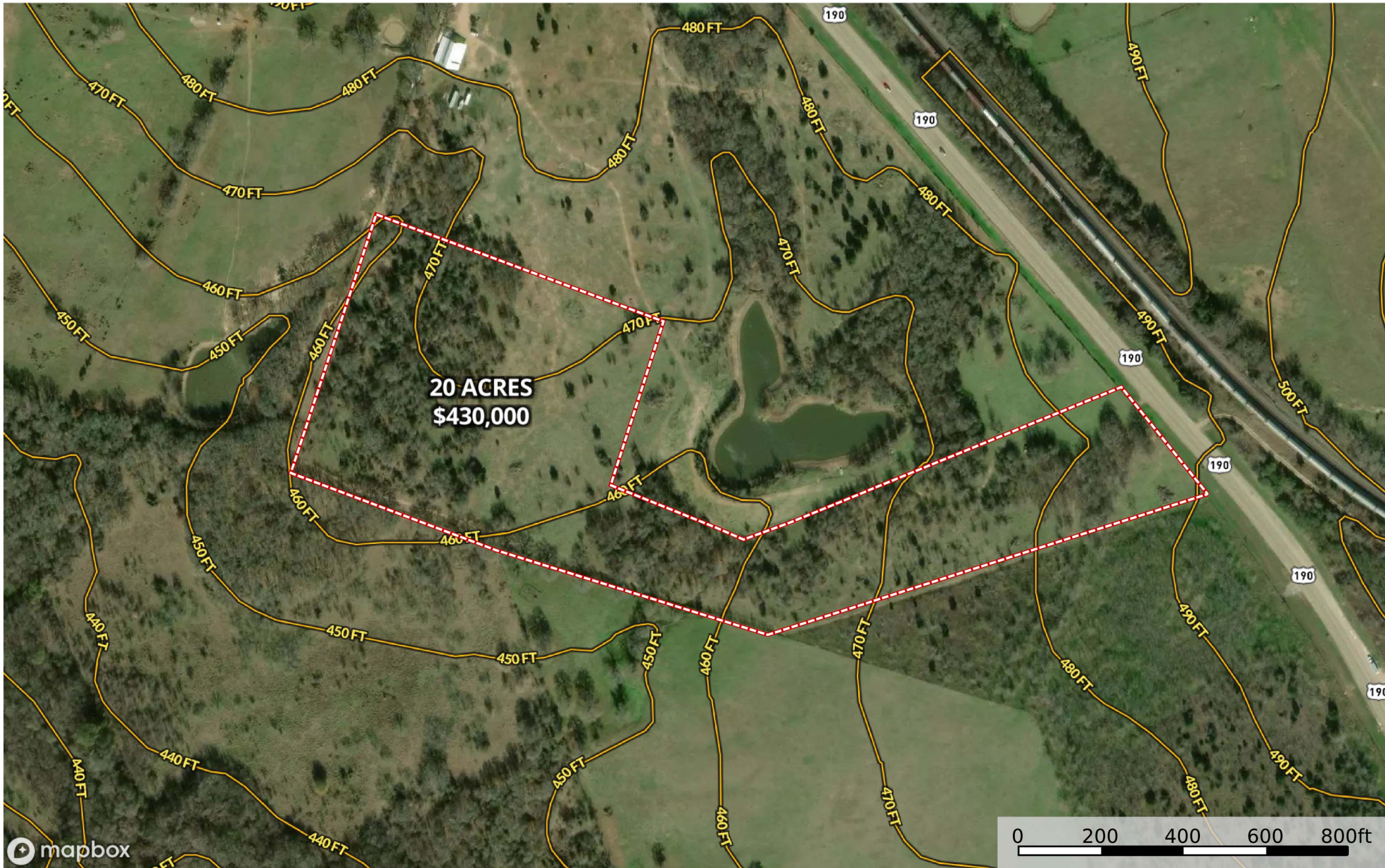
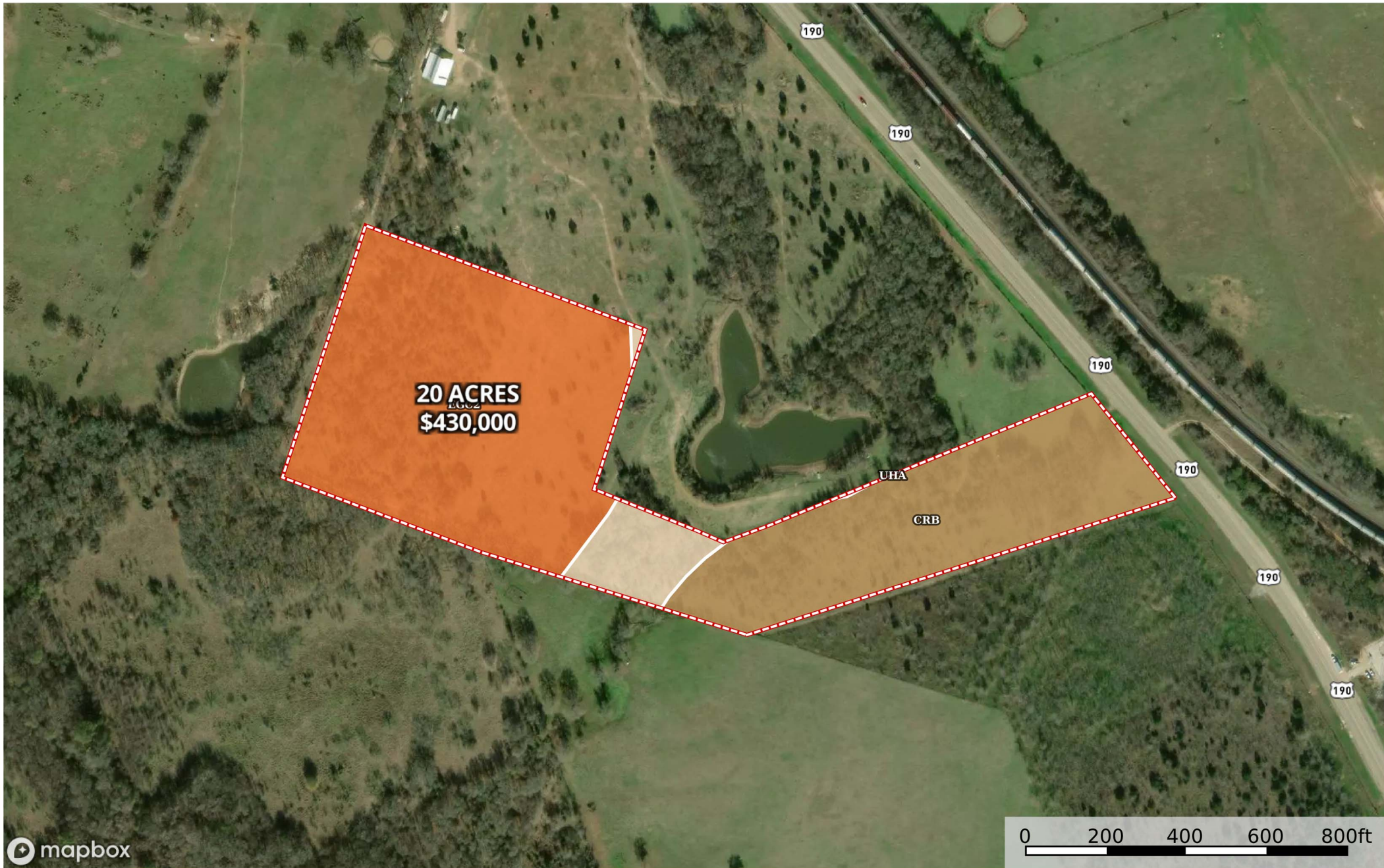




20+/- acres out of 57 Acres N US Hwy 190/36, Milano  
Milam County, Texas, AC +/-



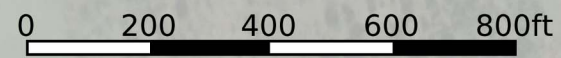
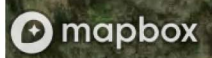
Boundary 1 Boundary



**20 ACRES**  
EgC2  
**\$430,000**

UHA

CRB



SOIL CODE	SOIL DESCRIPTION	ACRES	%	CPI	NCCPI	CAP
EgC2	Edge fine sandy loam, 2 to 5 percent slopes, moderately eroded	11.39	57.06	0	56	4e
CrB	Crockett fine sandy loam, 1 to 3 percent slopes	7.17	35.92	0	55	3e
UhA	Uhland loam, 0 to 1 percent slopes, frequently flooded	1.4	7.01	0	48	5w
TOTALS		19.96(*)	100%	-	55.08	3.71