

7774 FM 1486, Richard, TX  
Grimes County, Texas, 10 AC +/-

Boundary Lines are Approximate



 Boundary

7774 FM 1486, Richard, TX  
Grimes County, Texas, 10 AC +/-

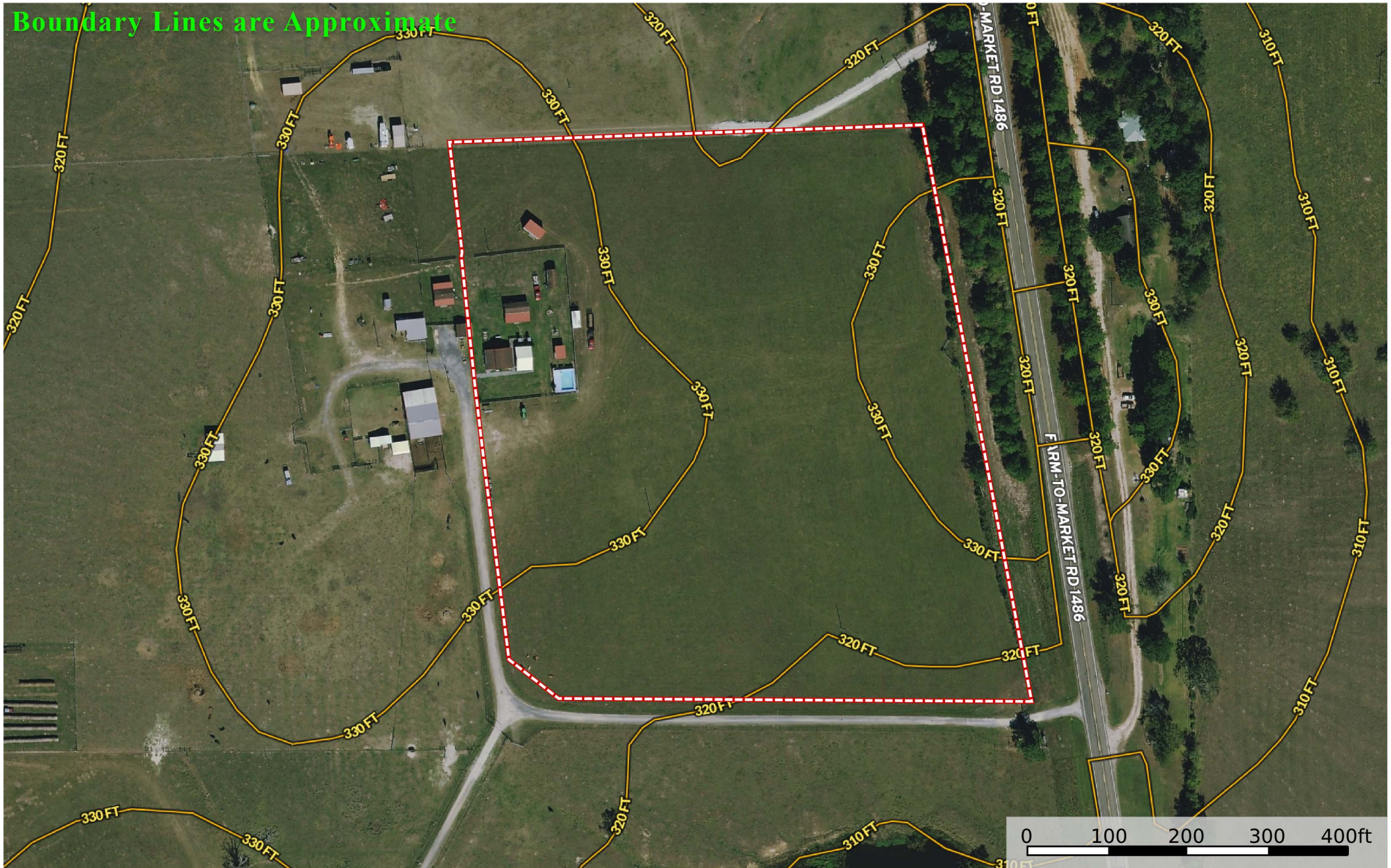
Boundary Lines are Approximate



- Boundary
- 100 Year Floodplain
- 500 Year Floodplain
- Floodway
- Special
- Unmapped/ Not Included

7774 FM 1486, Richard, TX  
Grimes County, Texas, 10 AC +/-

Boundary Lines are Approximate



 Boundary

7774 FM 1486, Richard, TX  
 Grimes County, Texas, 10 AC +/-

Boundary Lines are Approximate



SOIL CODE	SOIL DESCRIPTION	ACRES	%	CPI	NCCPI	CAP
HuC	Huntsburg loamy fine sand, 1 to 5 percent slopes	9.76	97.41	0	41	4e
AnC	Annona fine sandy loam, 1 to 5 percent slopes	0.26	2.59	0	55	4e
TOTALS		10.02(*)	100%	-	41.36	4.0