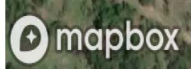
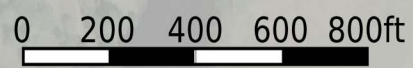


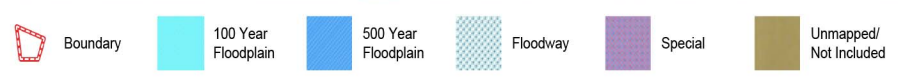
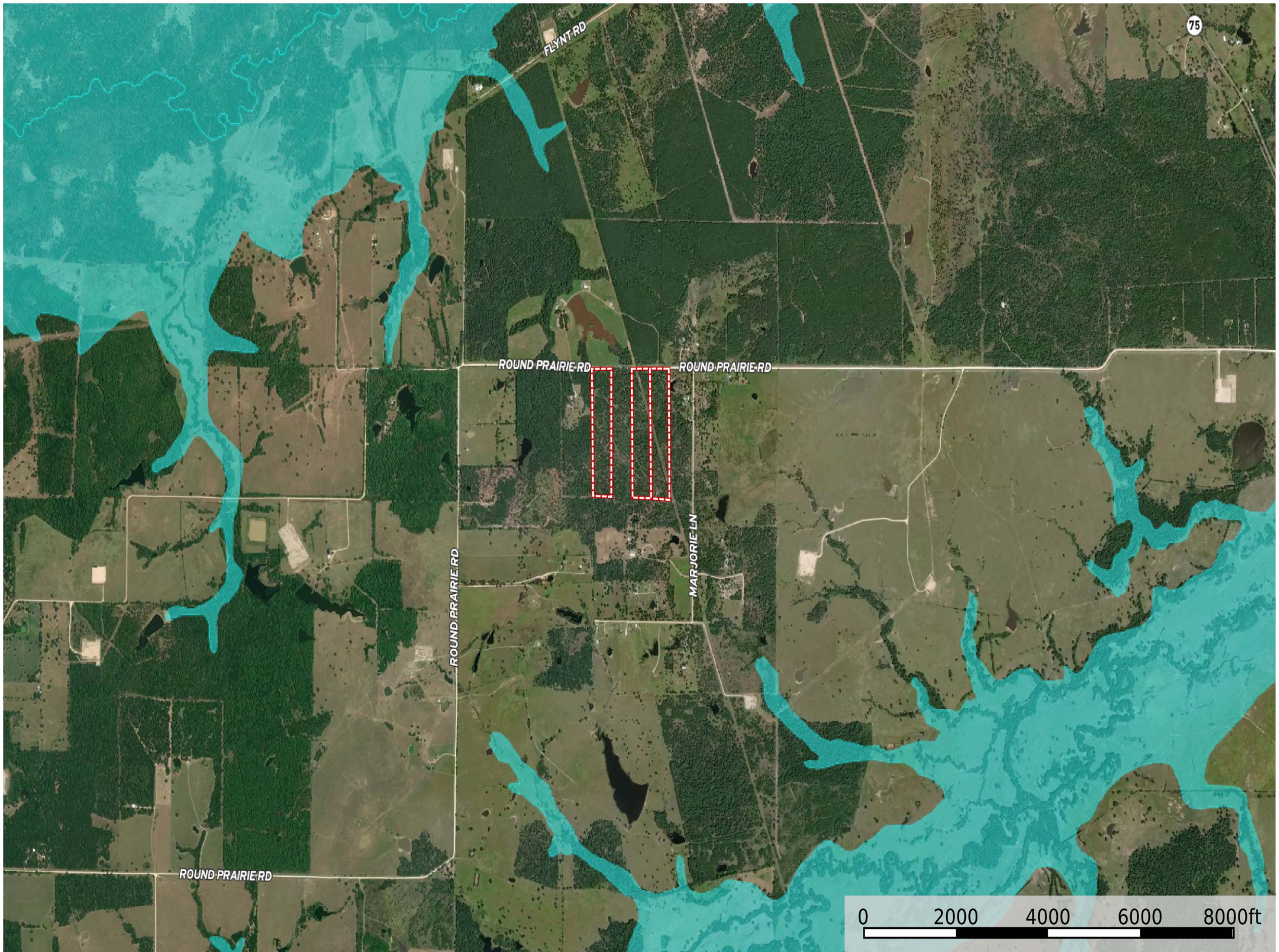
TRACT 1  
20+/- ACRES  
\$349,000

TRACT 3  
20+/- ACRES  
\$300,000

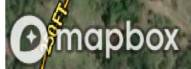
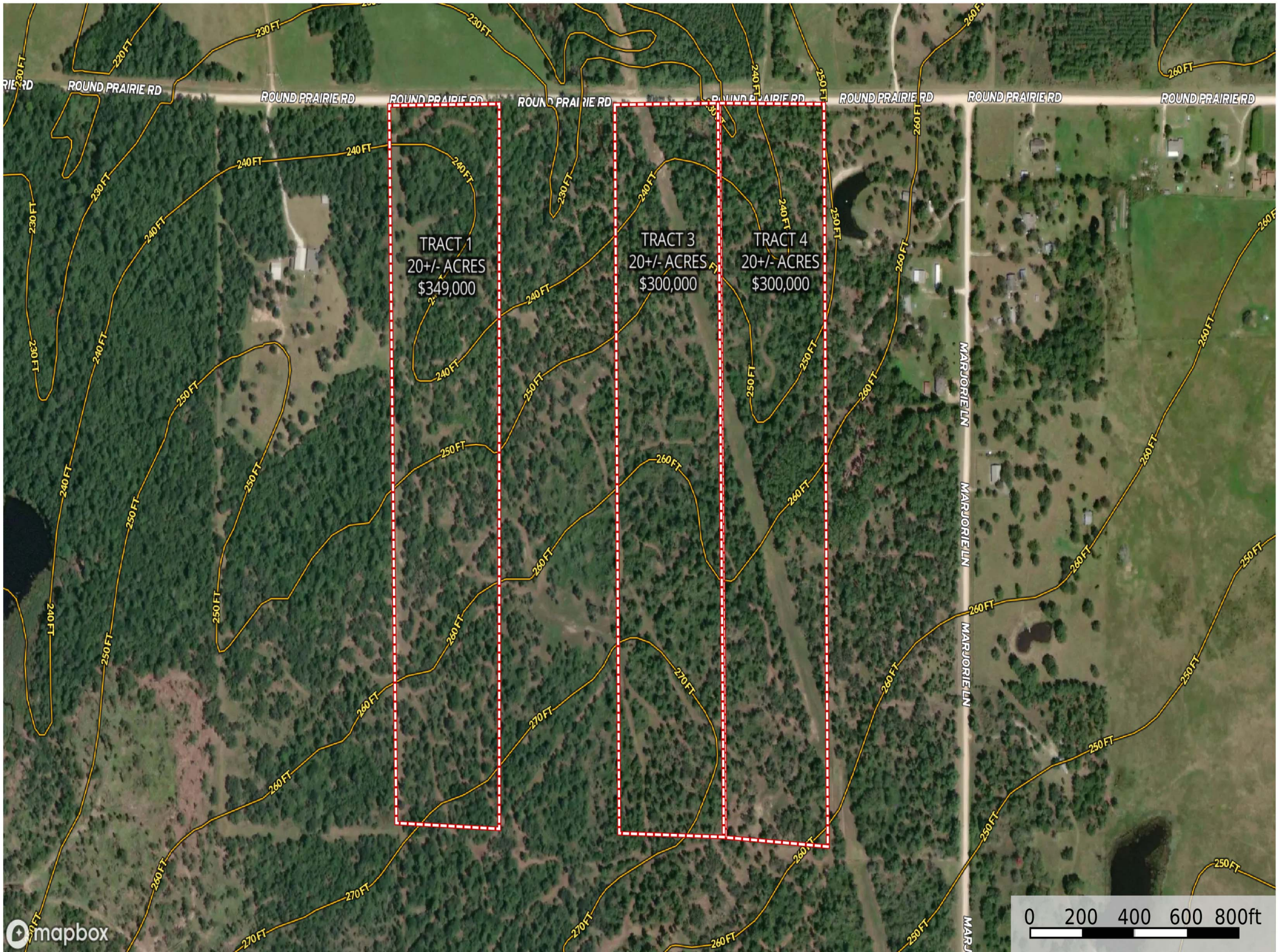
TRACT 4  
20+/- ACRES  
\$300,000



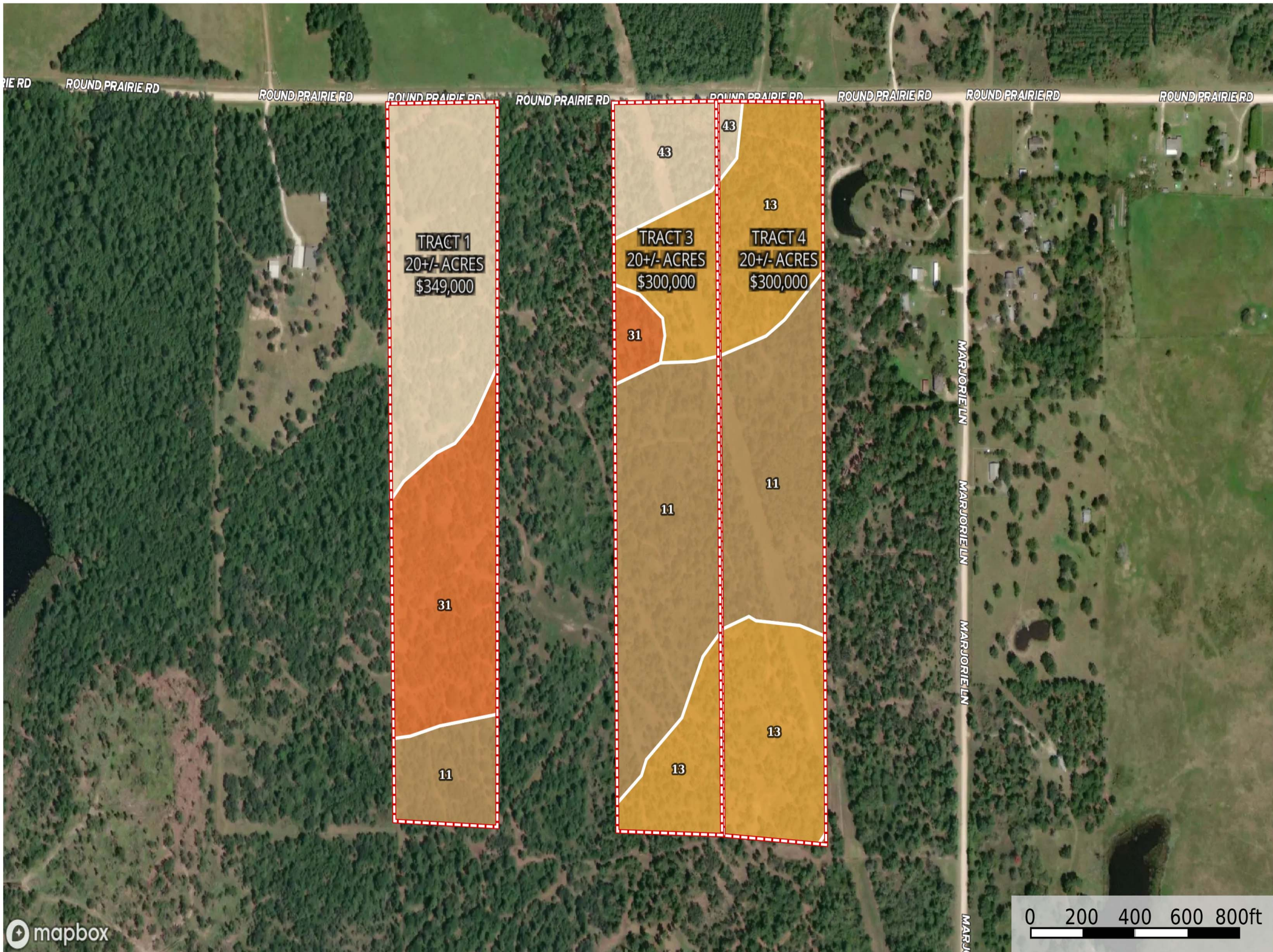












SOIL CODE	SOIL DESCRIPTION	ACRES	%	CPI	NCCPI	CAP
11	Elmina association, gently undulating	20.67	34.31	0	44	3e
13	Falba fine sandy loam, 1 to 5 percent slopes	17.67	29.33	0	33	4e
43	Woodtell fine sandy loam, 1 to 3 percent slopes	13.14	21.81	0	58	3e
31	Kitterell-Rock outcrop complex, 1 to 10 percent slopes	8.78	14.58	0	5	7s
TOTALS		60.26(*)	100%	-	38.16	3.88