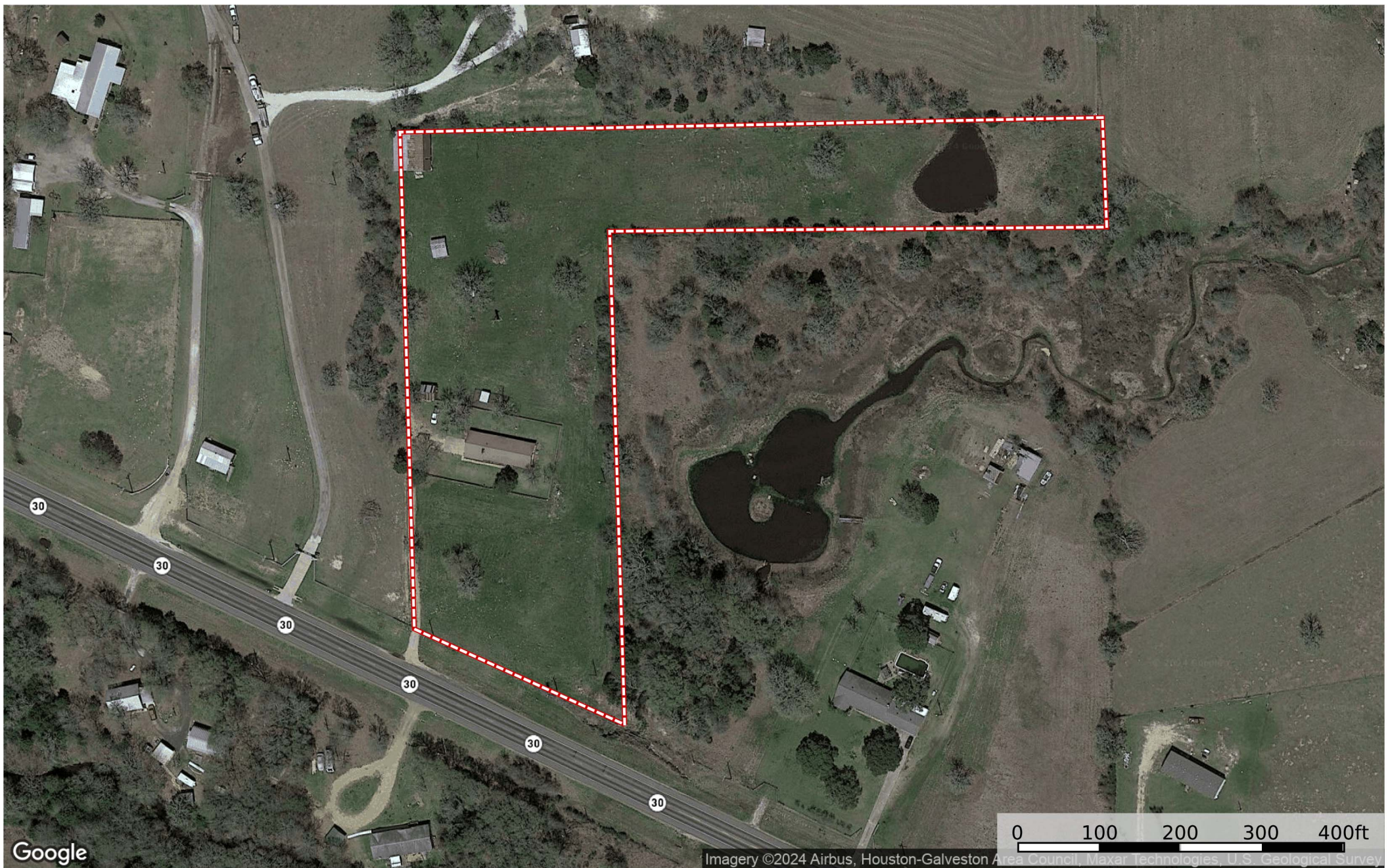



6139 HWY 30, Anderson, TX 77830  
Grimes County, Texas, 5.714 AC +/-



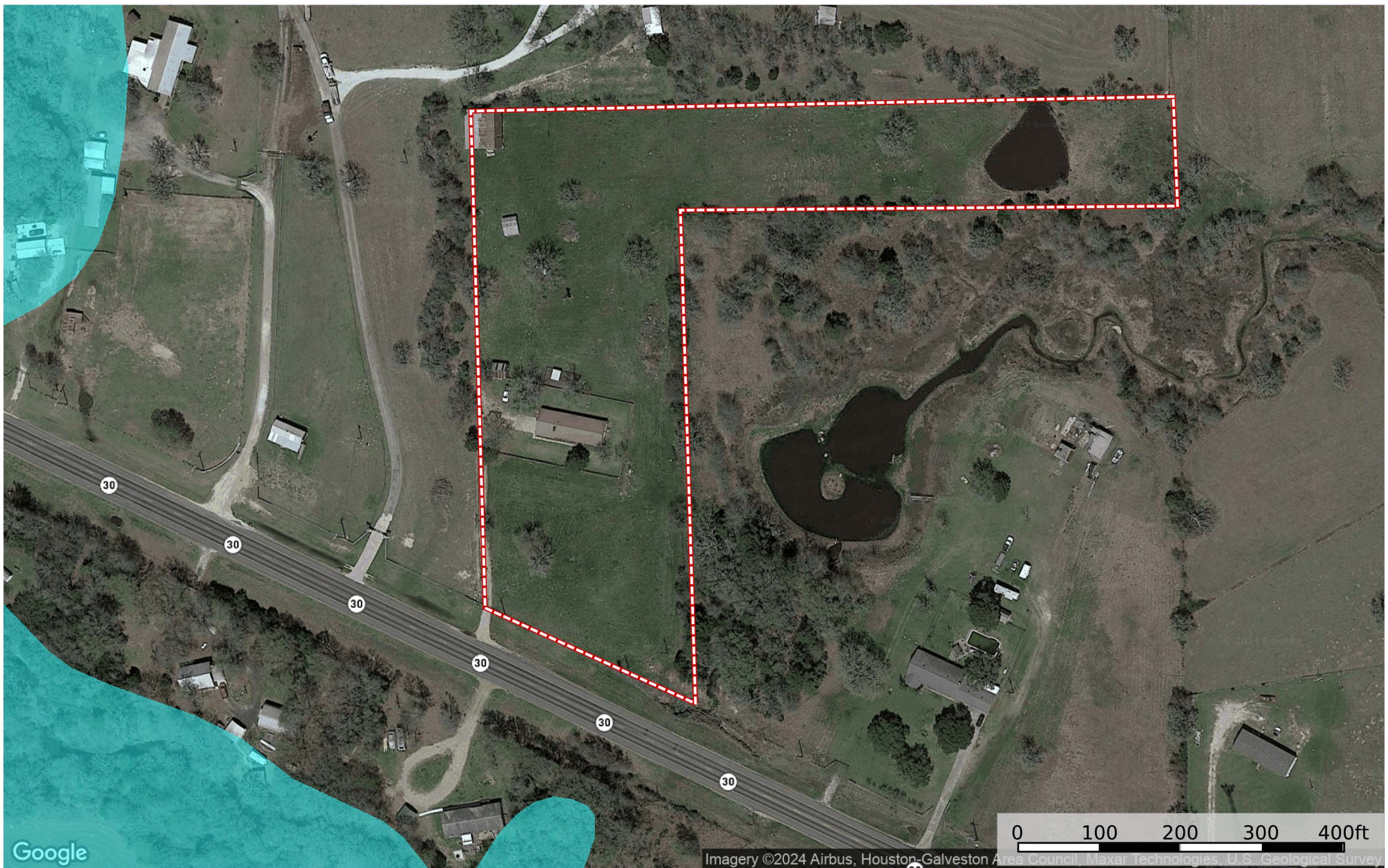
Google

Imagery ©2024 Airbus, Houston-Galveston Area Council, Maxar Technologies, U.S. Geological Survey

 Boundary

 The information contained herein was obtained from sources deemed to be reliable. Land id™ Services makes no warranties or guarantees as to the completeness or accuracy thereof.


6139 HWY 30, Anderson, TX 77830  
Grimes County, Texas, 5.714 AC +/-



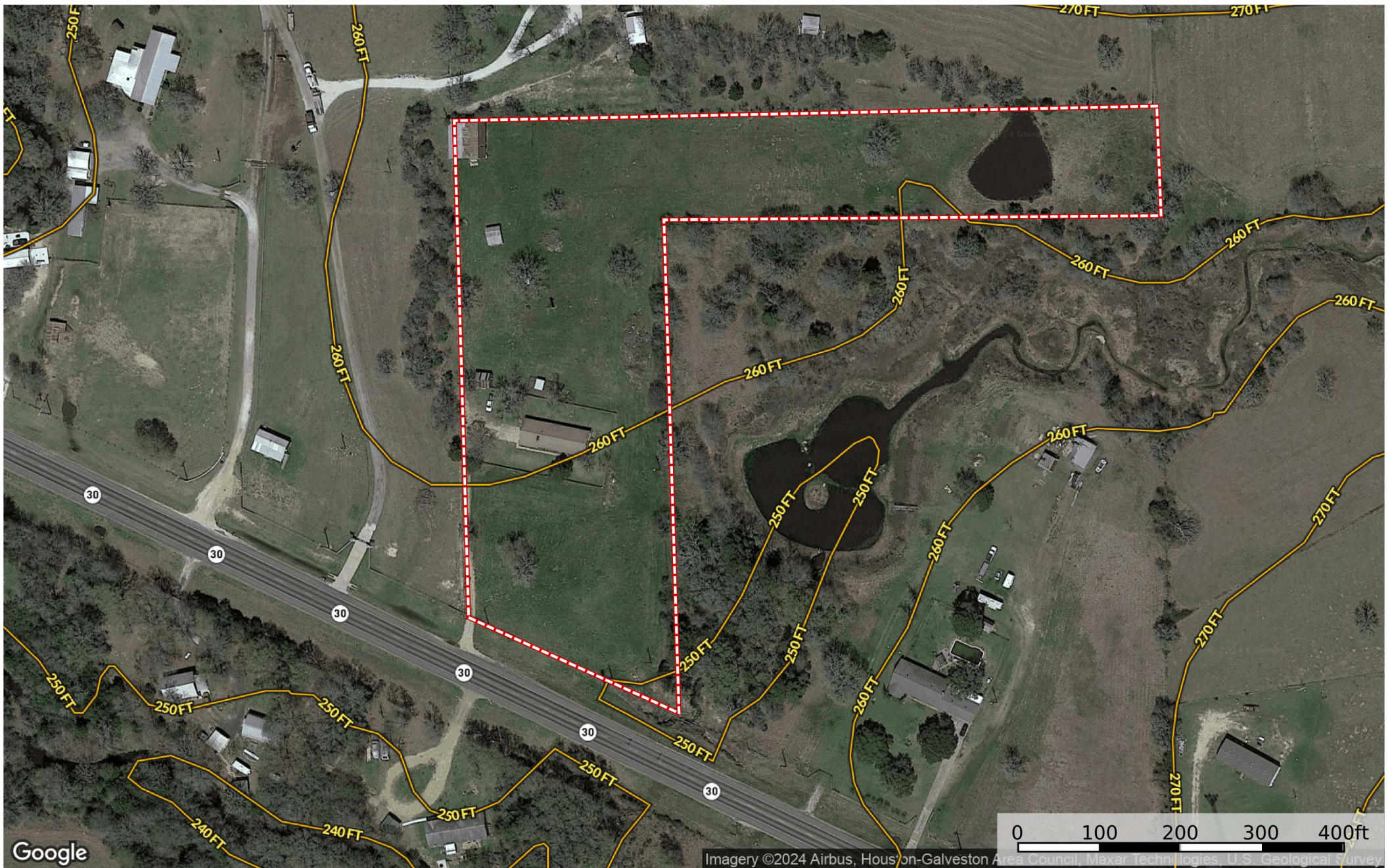
Google

Imagery ©2024 Airbus, Houston-Galveston Area Council, Maxar Technologies, U.S. Geological Survey

-  Boundary
-  100 Year Floodplain
-  500 Year Floodplain
-  Floodway
-  Special
-  Unmapped/ Not Included

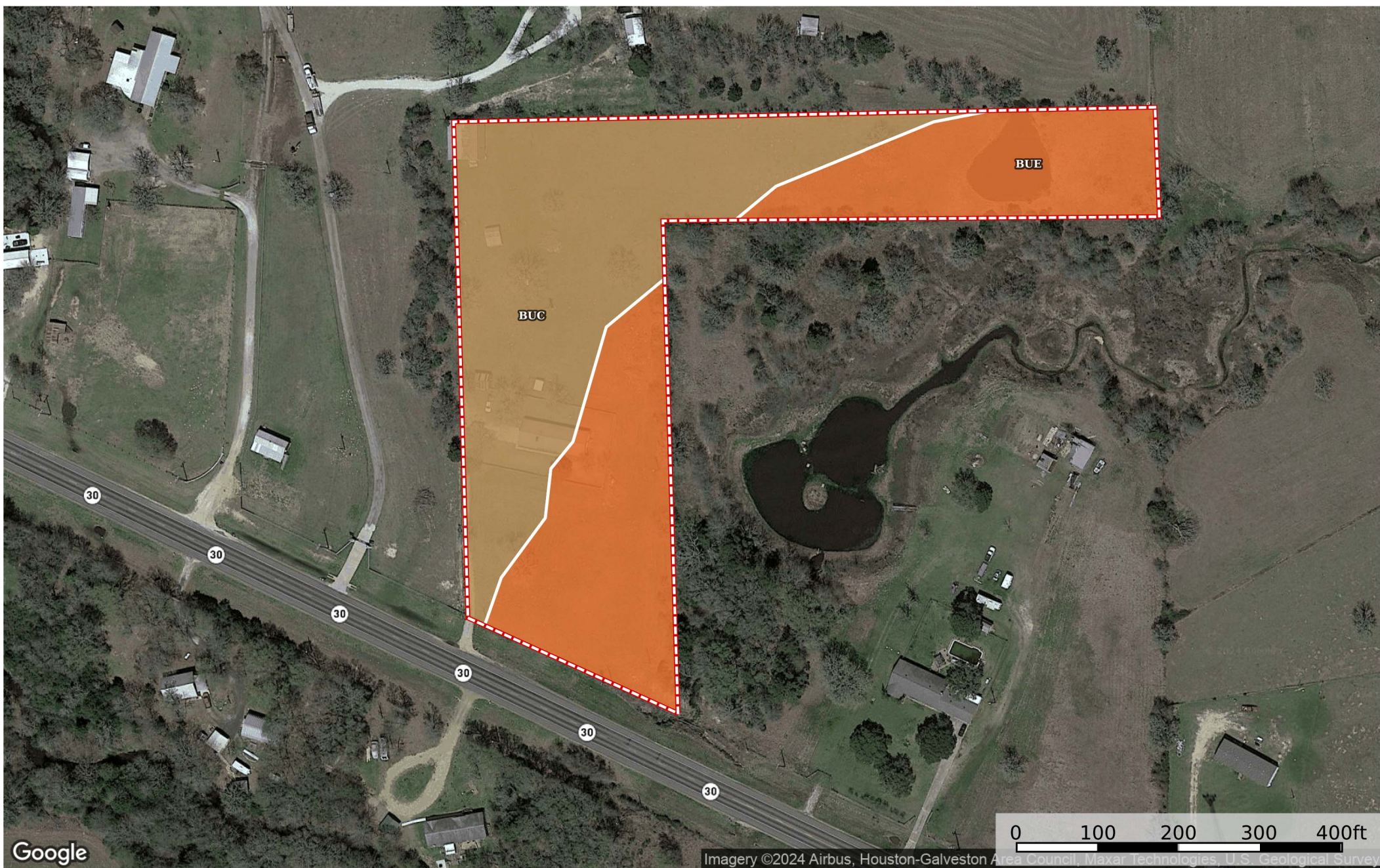
 The information contained herein was obtained from sources deemed to be reliable. Land id™ Services makes no warranties or guarantees as to the completeness or accuracy thereof.

6139 HWY 30, Anderson, TX 77830  
Grimes County, Texas, 5.714 AC +/-



 Boundary

**6139 HWY 30, Anderson, TX 77830**  
 Grimes County, Texas, 5.714 AC +/-



SOIL CODE	SOIL DESCRIPTION	ACRES	%	CPI	NCCPI	CAP
BuC	Burlewash fine sandy loam, 1 to 5 percent slopes	2.96	51.57	0	43	4e
BuE	Burlewash fine sandy loam, 5 to 12 percent slopes	2.78	48.43	0	30	6e
TOTALS		5.74(* )	100%	-	36.7	4.97