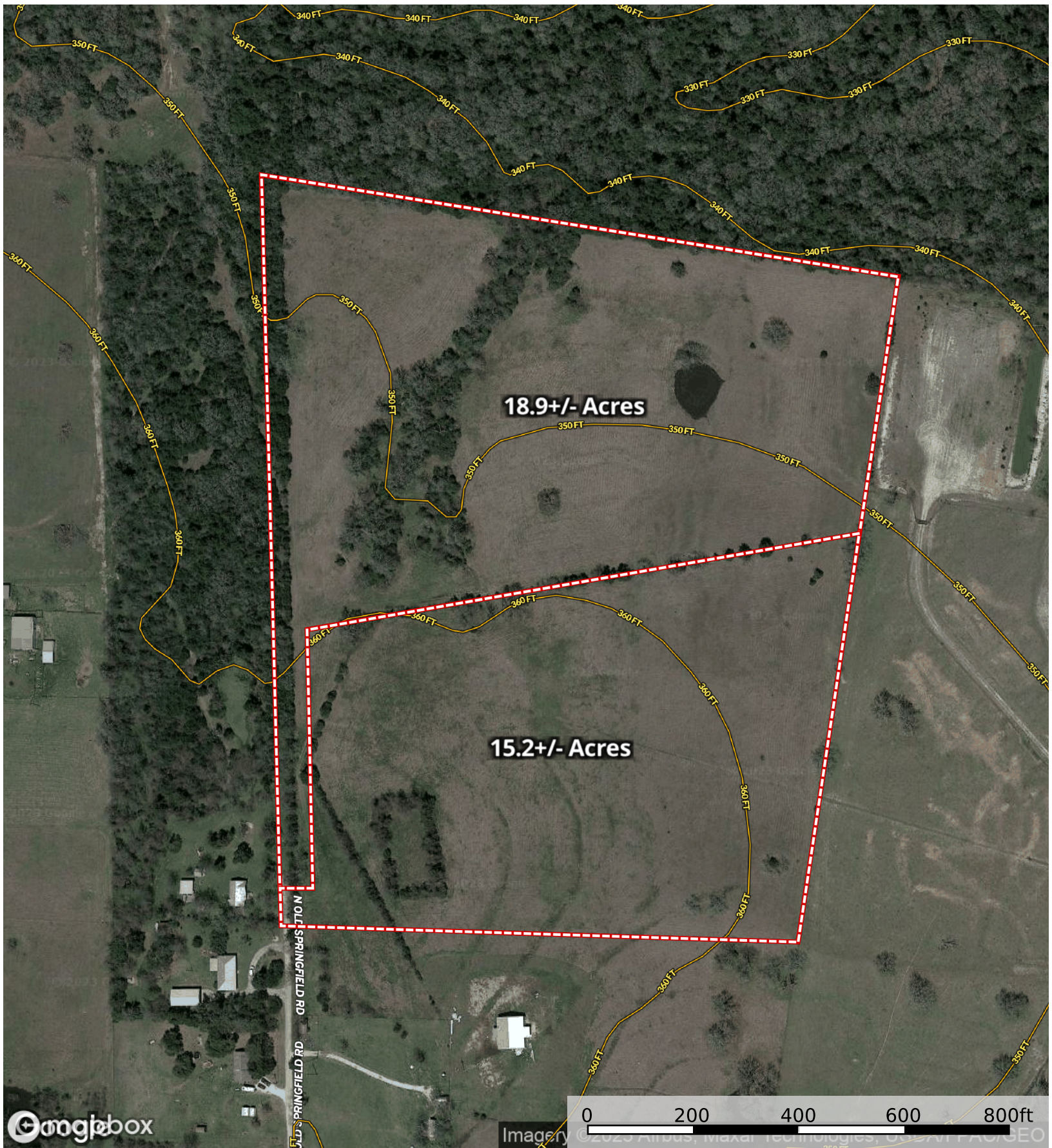
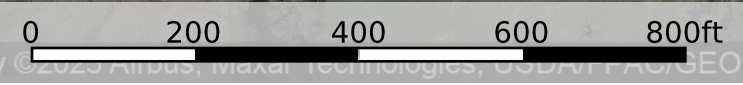
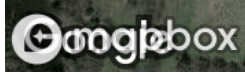
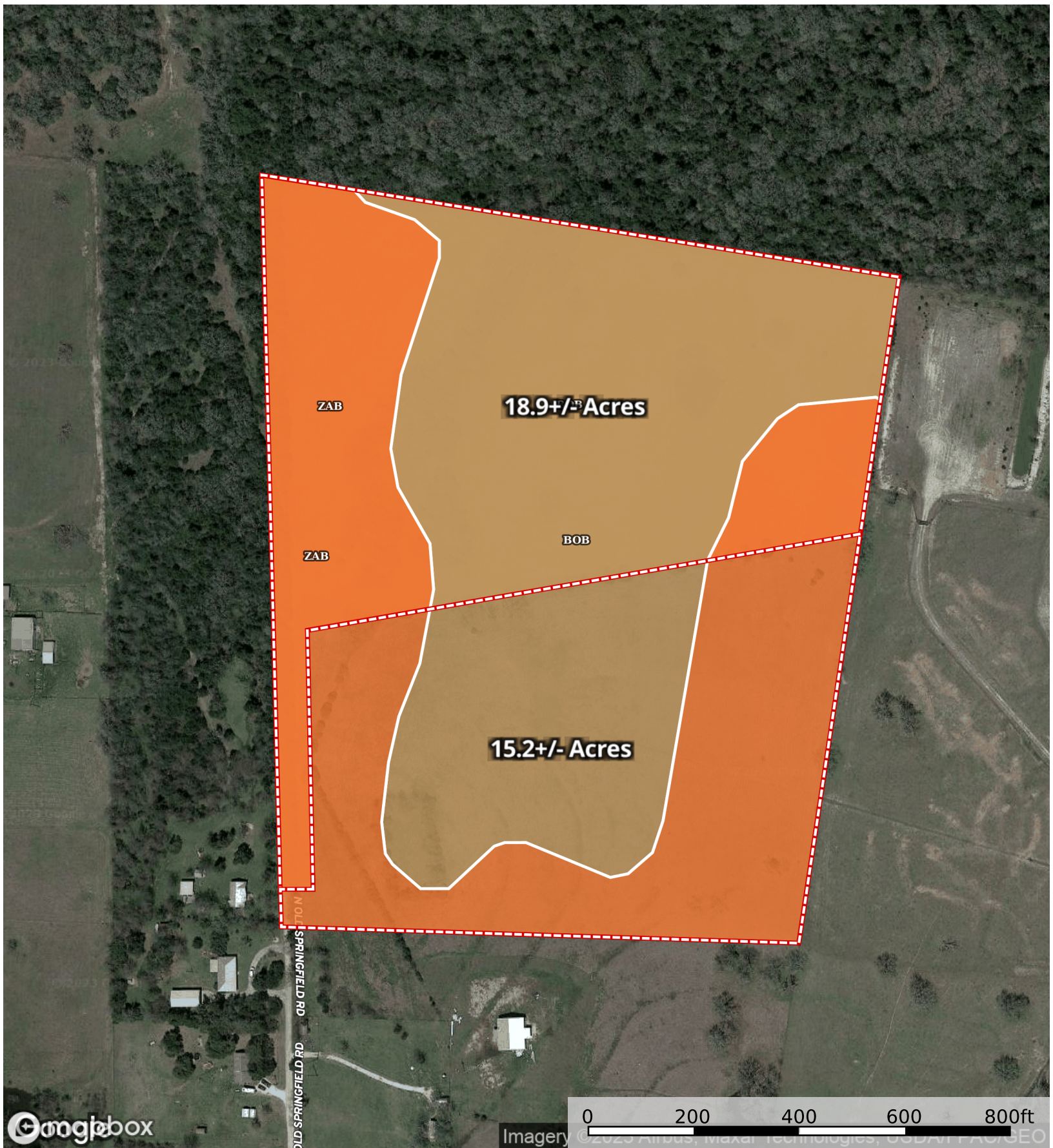




- 15.2+/- Acres
- 18.9+/- Acres
- 34.14 Acres



- 15.2+/- Acres
- 18.9+/- Acres
- 34.14 Acres



- 15.2 +/- Acres
- 18.9 +/- Acres
- 34.14 Acres

|  All Polygons 52.96 ac

SOIL CODE	SOIL DESCRIPTION	ACRES	%	CPI	NCCPI	CAP
BoB	Boonville fine sandy loam, 1 to 3 percent slopes	29.28	55.31	0	40	3e
ZaB	Zack fine sandy loam, 1 to 5 percent slopes	23.68	44.73	0	38	4e
TOTALS		52.96(*)	100%	-	39.12	3.45

(*) Total acres may differ in the second decimal compared to the sum of each acreage soil. This is due to a round error because we only show the acres of each soil with two decimal.

|  18.9+/- Acres 18.89 ac

SOIL CODE	SOIL DESCRIPTION	ACRES	%	CPI	NCCPI	CAP
BoB	Boonville fine sandy loam, 1 to 3 percent slopes	11.43	60.54	0	40	3e
ZaB	Zack fine sandy loam, 1 to 5 percent slopes	7.46	39.51	0	38	4e
TOTALS		18.89(*)	100%	-	39.23	3.39

(*) Total acres may differ in the second decimal compared to the sum of each acreage soil. This is due to a round error because we only show the acres of each soil with two decimal.

|  34.14 Acres 34.07 ac

SOIL CODE	SOIL DESCRIPTION	ACRES	%	CPI	NCCPI	CAP
BoB	Boonville fine sandy loam, 1 to 3 percent slopes	17.85	52.41	0	40	3e
ZaB	Zack fine sandy loam, 1 to 5 percent slopes	16.22	47.62	0	38	4e
TOTALS		34.07(*)	100%	-	39.06	3.48









(*) Total acres may differ in the second decimal compared to the sum of each acreage soil. This is due to a round error because we only show the acres of each soil with two decimal.

Capability Legend

Increased Limitations and Hazards

Decreased Adaptability and Freedom of Choice Users

Land, Capability

								
	1	2	3	4	5	6	7	8
'Wild Life'	•	•	•	•	•	•	•	•
Forestry	•	•	•	•	•	•	•	
Limited	•	•	•	•	•	•	•	
Moderate	•	•	•	•	•	•		
Intense	•	•	•	•	•			
Limited	•	•	•	•				
Moderate	•	•	•					
Intense	•	•						
Very Intense	•							

Grazing Cultivation

(c) climatic limitations (e) susceptibility to erosion

(s) soil limitations within the rooting zone (w) excess of water