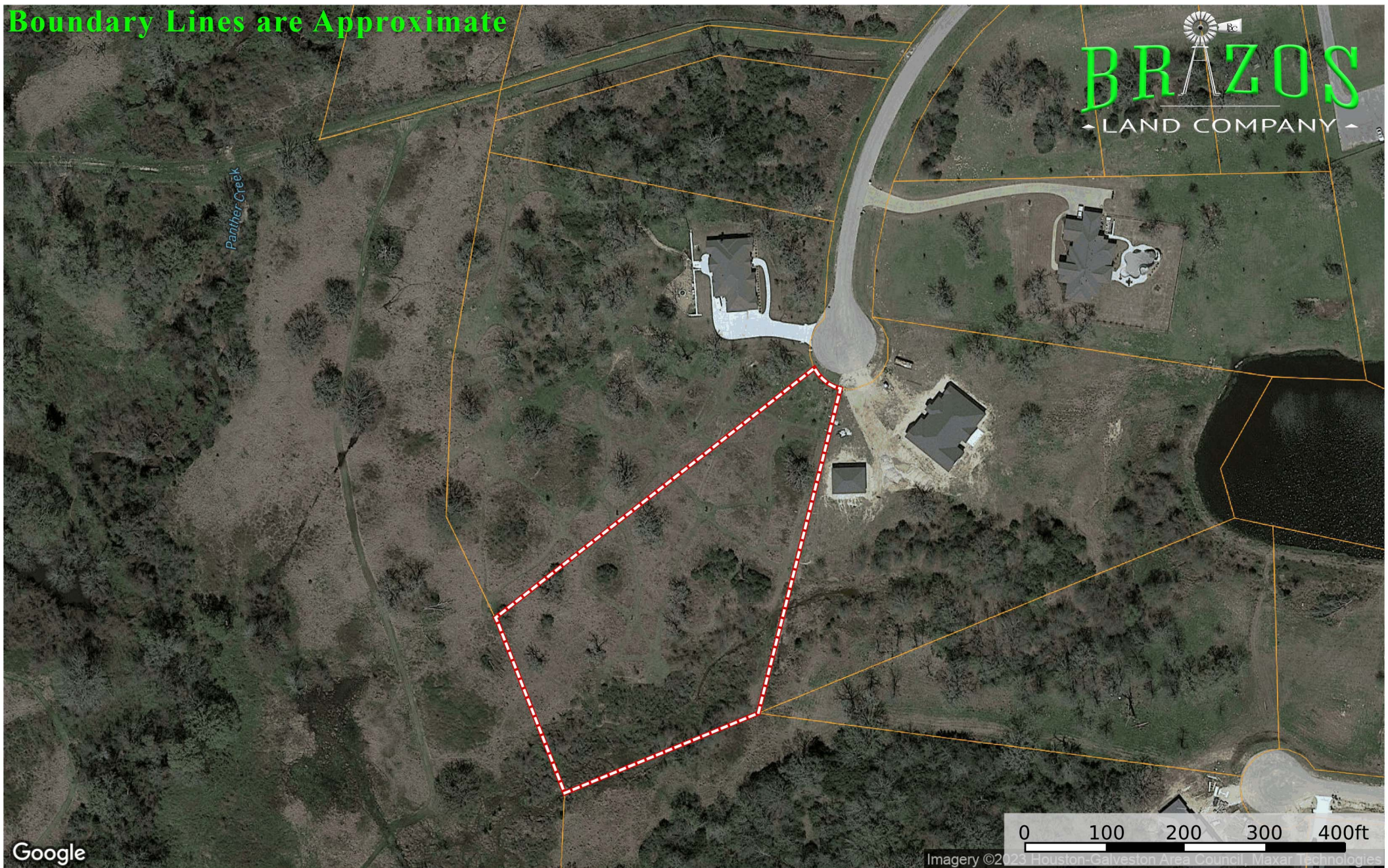
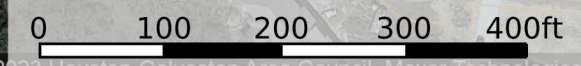


Lot 443 Henley Cove, Iola, TX  
Grimes County, Texas, AC +/-

**Boundary Lines are Approximate**



Panther Creek



Imagery ©2023 Houston-Galveston Area Council, Maxar Technologies

Google

 Boundary

**id.** The information contained herein was obtained from sources deemed to be reliable. Land id™ Services makes no warranties or guarantees as to the completeness or accuracy thereof.

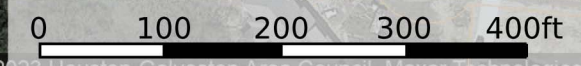
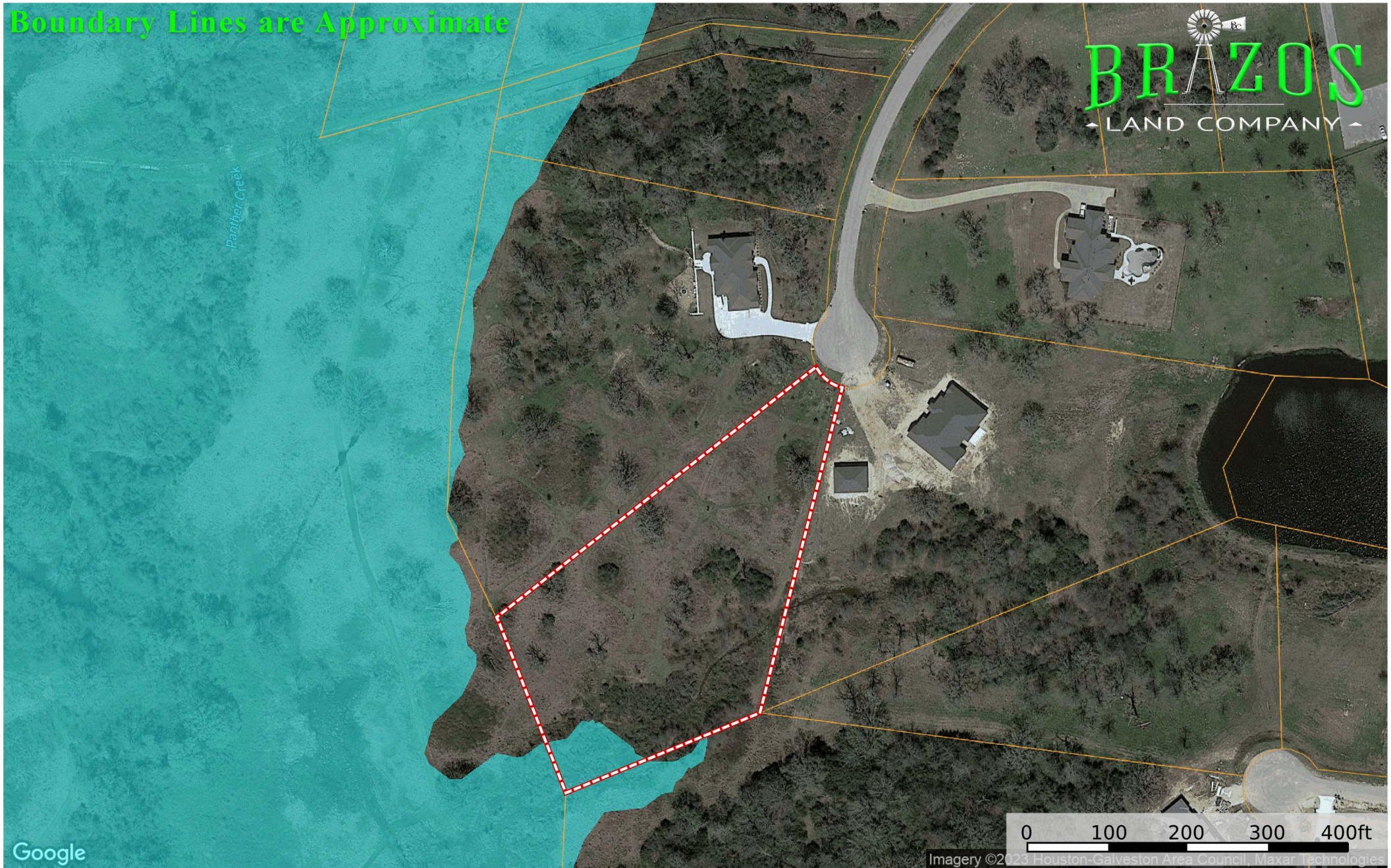


Lot 443 Henley Cove, Iola, TX  
Grimes County, Texas, AC +/-

Boundary Lines are Approximate



Panther Creek



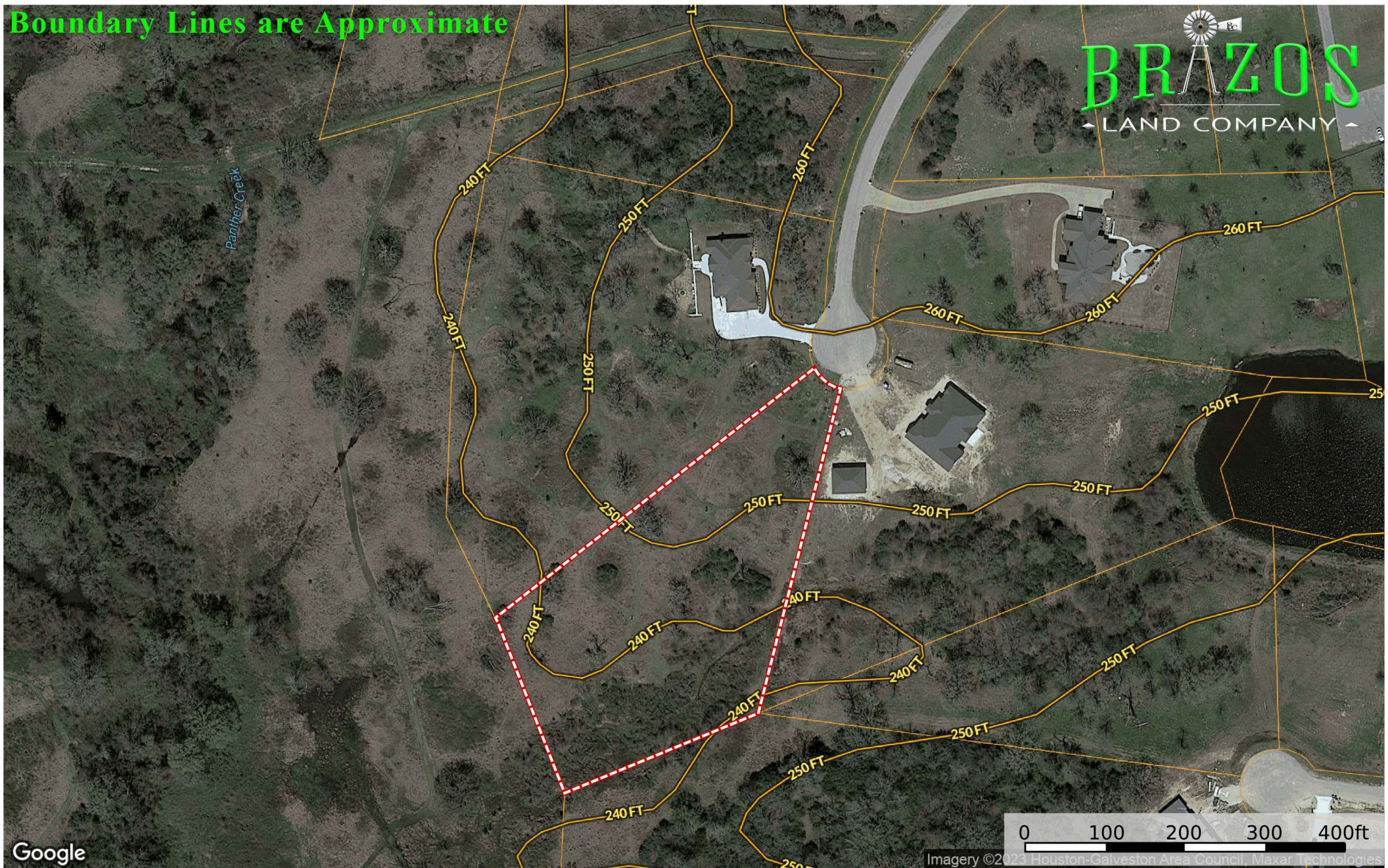
Imagery ©2023 Houston-Galveston Area Council, Maxar Technologies

- Boundary
- 100 Year Floodplain
- 500 Year Floodplain
- Floodway
- Special
- Unmapped/Not Included

**id.** The information contained herein was obtained from sources deemed to be reliable. Land id™ Services makes no warranties or guarantees as to the completeness or accuracy thereof.



Boundary Lines are Approximate



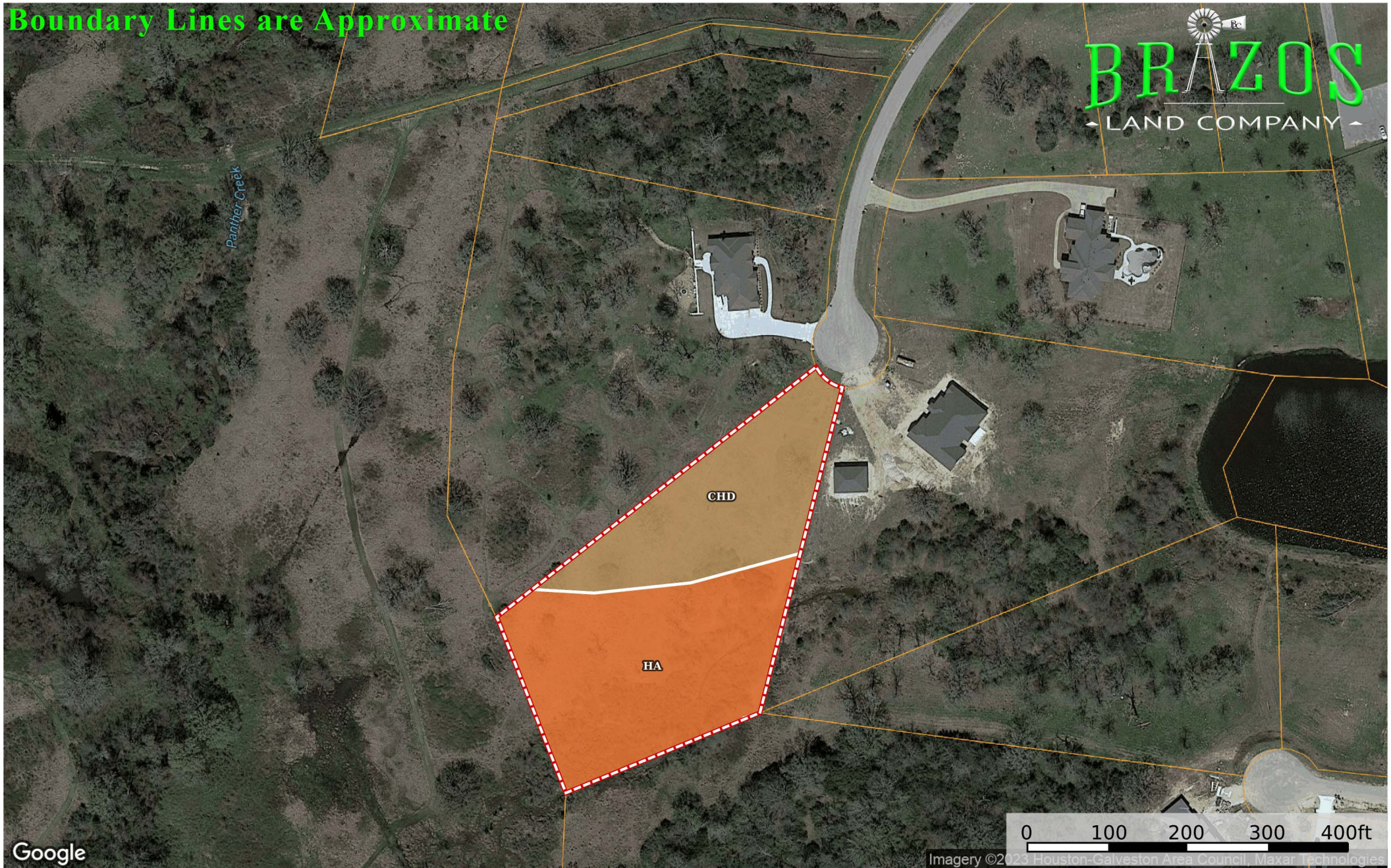
Google

Imagery ©2023 Houston-Galveston Area Council, Maxar Technologies

 Boundary



Boundary Lines are Approximate



Google

Imagery ©2023 Houston-Galveston Area Council, Maxar Technologies

SOIL CODE	SOIL DESCRIPTION	ACRES	%	CPI	NCCPI	CAP
Ha	Hatlift fine sandy loam, frequently flooded	1.54	59.23	0	31	5w
ChD	Chazos loamy fine sand, 5 to 8 percent slopes	1.06	40.77	0	48	4e
TOTALS		2.6(*)	100%	-	37.93	4.59