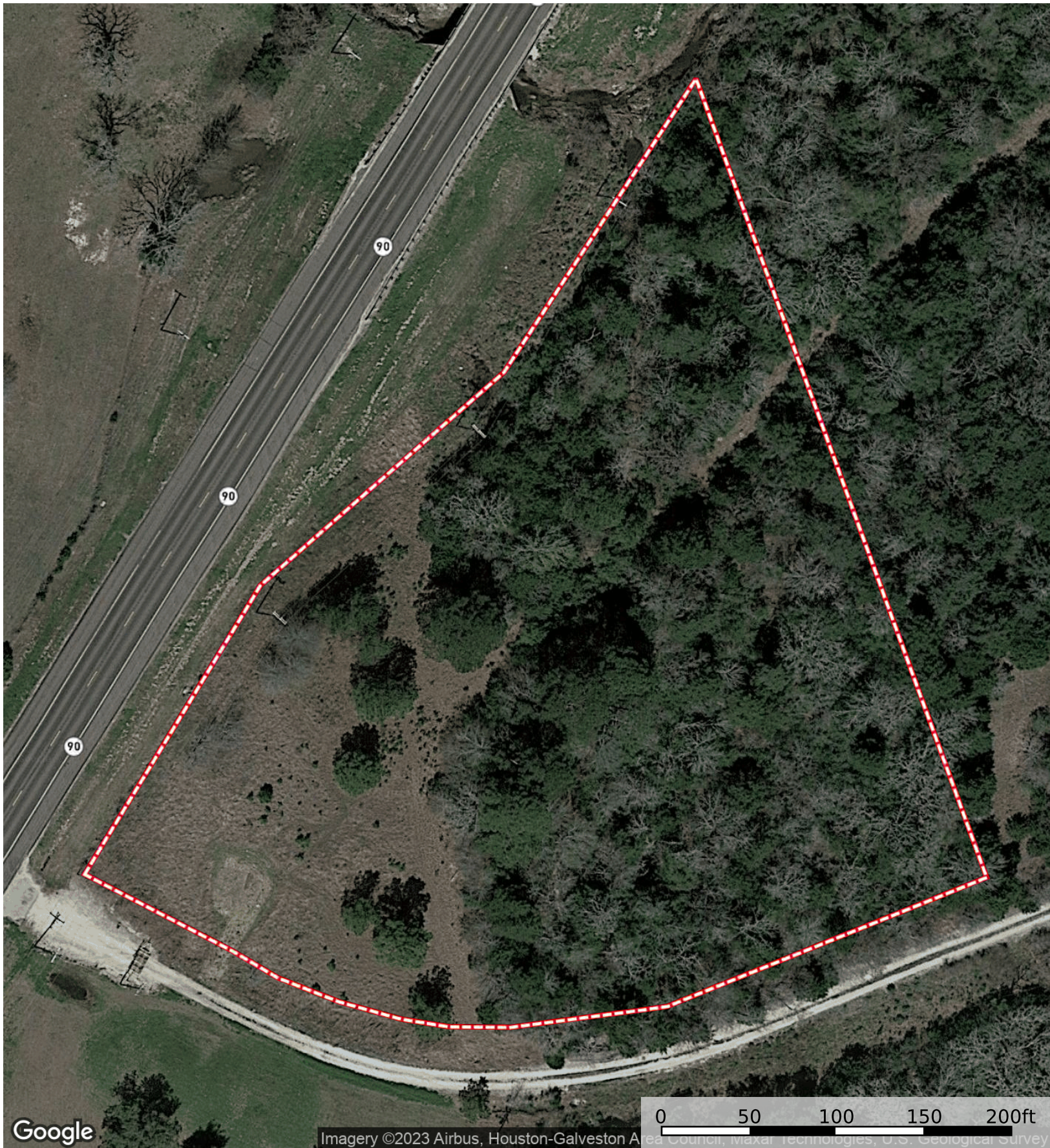



3.4+/- Acres State Highway 90
Grimes County, Texas, 3.4 AC +/-



Google

Imagery ©2023 Airbus, Houston-Galveston Area Council, Maxar Technologies, U.S. Geological Survey

 Boundary

3.4+/- Acres State Highway 90

Grimes County, Texas, 3.4 AC +/-



Boundary

3.4+/- Acres State Highway 90

Grimes County, Texas, 3.4 AC +/-



- Boundary
- 100 Year Floodplain
- 500 Year Floodplain
- Floodway
- Special
- Unmapped/ Not Included

3.4+/- Acres State Highway 90
Grimes County, Texas, 3.4 AC +/-



Google

Imagery ©2023 Airbus, Houston-Galveston Area Council, Maxar Technologies, U.S. Geological Survey

Boundary

|  Boundary 3.37 ac

SOIL CODE	SOIL DESCRIPTION	ACRES	%	CPI	NCCPI	CAP
Na	Nahatche clay loam, frequently flooded	2.35	69.94	0	39	5w
FaC	Falba fine sandy loam, 1 to 5 percent slopes	0.87	25.89	0	34	4e
ShC	Shiro loamy fine sand, 1 to 5 percent slopes	0.15	4.46	0	32	3e
TOTALS		3.37(*)	100%	-	37.51	4.65

(*) Total acres may differ in the second decimal compared to the sum of each acreage soil. This is due to a round error because we only show the acres of each soil with two decimal.

