

Lot 1 FM 3455  
Grimes County, Texas, 2 AC +/-

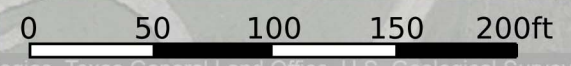


Boundary Lines are Approximate



Google

Imagery ©2023 Houston-Galveston Area Council, Maxar Technologies, Texas General Land Office, U.S. Geological Survey



Boundary

id. The information contained herein was obtained from sources deemed to be reliable. Land id™ Services makes no warranties or guarantees as to the completeness or accuracy thereof.



Boundary Lines are Approximate

Google

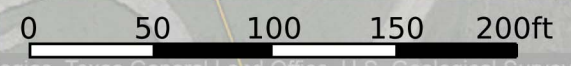
Imagery ©2023 Houston-Galveston Area Council, Maxar Technologies, Texas General Land Office, U.S. Geological Survey, USDA/FPAC/GEO

- Boundary
- 100 Year Floodplain
- 500 Year Floodplain
- Floodway
- Special
- Unmapped/ Not Included

Lot 1 FM 3455  
Grimes County, Texas, 2 AC +/-



Boundary Lines are Approximate



Imagery ©2023 Houston-Galveston Area Council, Maxar Technologies, Texas General Land Office, U.S. Geological Survey

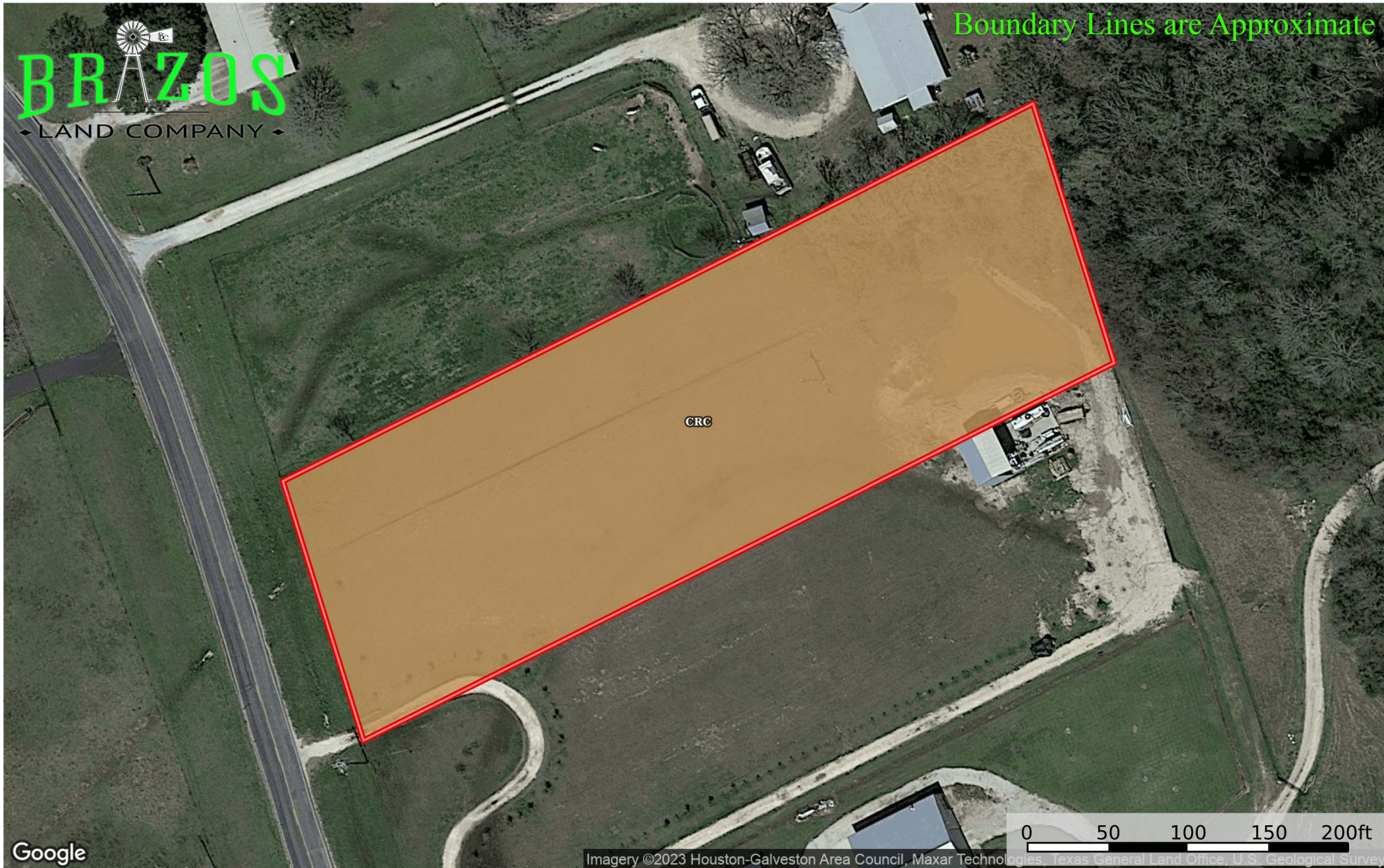
Google

Boundary

id. The information contained herein was obtained from sources deemed to be reliable. Land id™ Services makes no warranties or guarantees as to the completeness or accuracy thereof.



Boundary Lines are Approximate



Google

Imagery ©2023 Houston-Galveston Area Council, Maxar Technologies, Texas General Land Office, U.S. Geological Survey

SOIL CODE	SOIL DESCRIPTION	ACRES	%	CPI	NCCPI	CAP
CrC	Crockett fine sandy loam, 1 to 5 percent slopes	2.01	100	0	36	4e
TOTALS		2.01(* )	100%	-	36.0	4