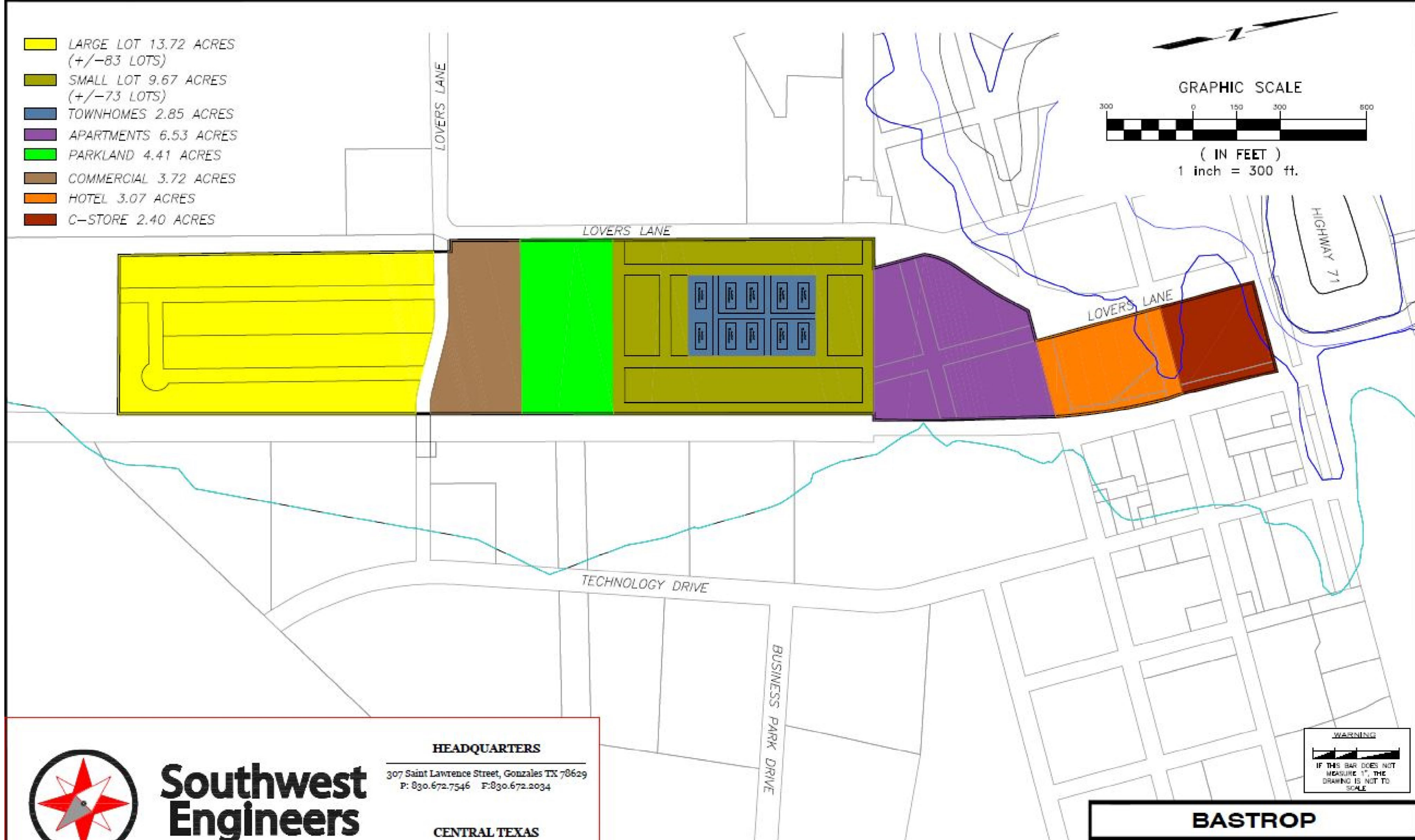
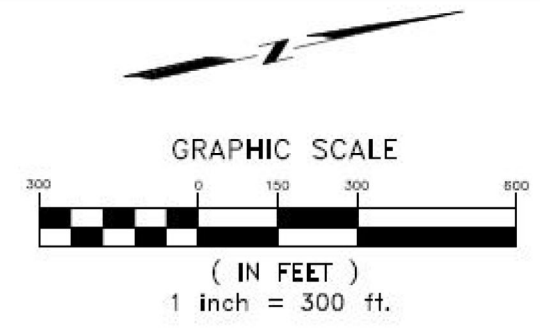


- LARGE LOT 13.72 ACRES  
(+/-83 LOTS)
- SMALL LOT 9.67 ACRES  
(+/-73 LOTS)
- TOWNHOMES 2.85 ACRES
- APARTMENTS 6.53 ACRES
- PARKLAND 4.41 ACRES
- COMMERCIAL 3.72 ACRES
- HOTEL 3.07 ACRES
- C-STORE 2.40 ACRES



**Southwest  
Engineers**

**HEADQUARTERS**  
307 Saint Lawrence Street, Gonzales TX 78629  
P: 830.672.7546 F: 830.672.2034

**CENTRAL TEXAS**

**WARNING**  
IF THIS BAR DOES NOT  
MEASURE 1", THE  
DRAWING IS NOT TO  
SCALE

**BASTROP**