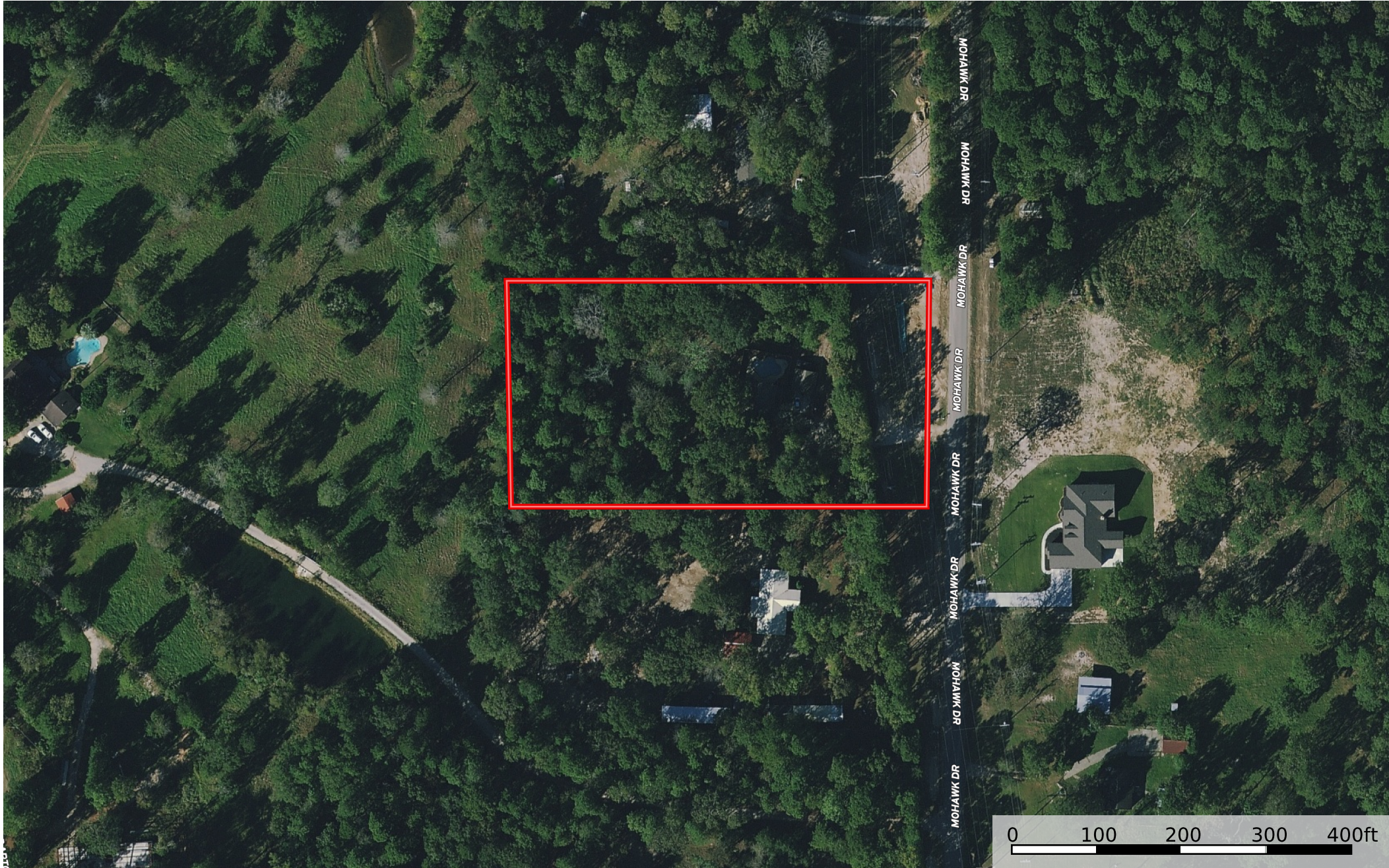


1372 Mohawk Dr
Montgomery County, Texas, 2.3 AC +/-

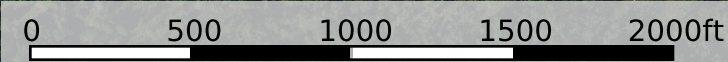
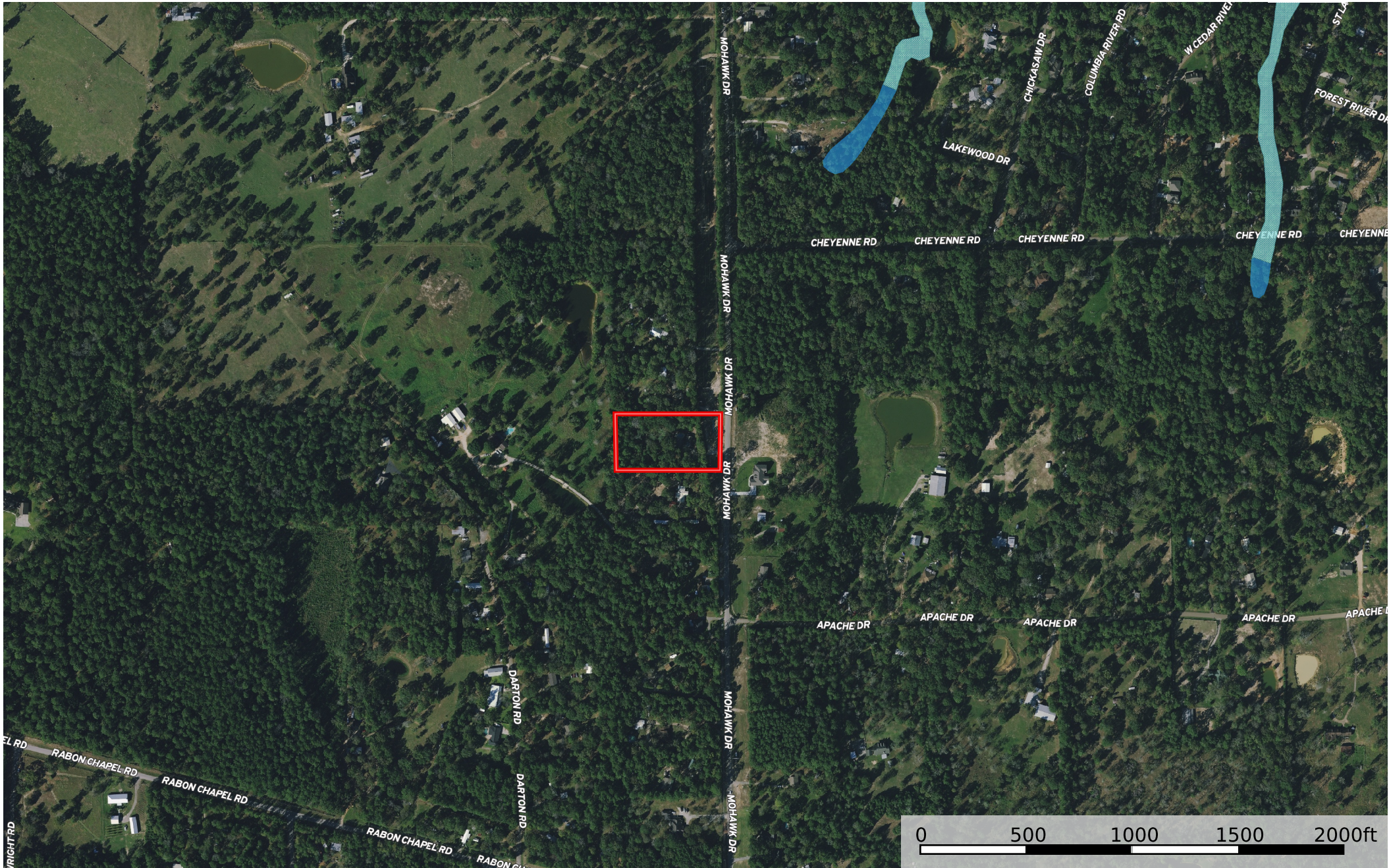


Boundary



The information contained herein was obtained from sources deemed to be reliable. MapRight Services makes no warranties or guarantees as to the completeness or accuracy thereof.

1372 Mohawk Dr
Montgomery County, Texas, 2.3 AC +/-

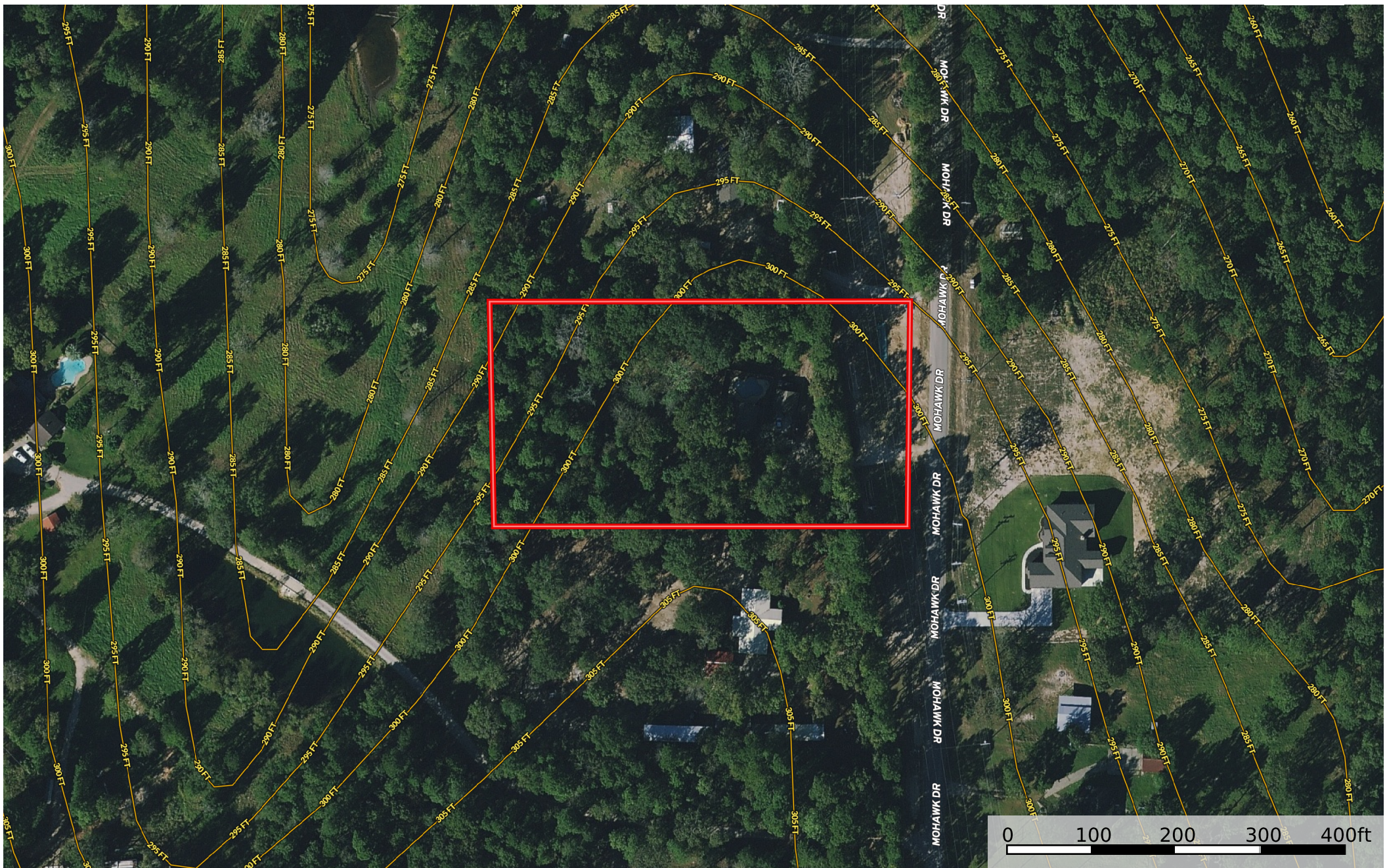


- Boundary
- 100 Year Floodplai
- 500 Year Floodplai
- Floodway
- Special
- Unmappe d/ Not



The information contained herein was obtained from sources deemed to be reliable. MapRight Services makes no warranties or guarantees as to the completeness or accuracy thereof.

1372 Mohawk Dr
Montgomery County, Texas, 2.3 AC +/-



Boundary



The information contained herein was obtained from sources deemed to be reliable. MapRight Services makes no warranties or guarantees as to the completeness or accuracy thereof.

1372 Mohawk Dr
Montgomery County, Texas, 2.3 AC +/-



Boundary



The information contained herein was obtained from sources deemed to be reliable. MapRight Services makes no warranties or guarantees as to the completeness or accuracy thereof.









SOIL CODE	SOIL DESCRIPTION	ACRES	%	CAP
WkD	Fetzer loamy fine sand, 5 to 12 percent slopes	1.3	55.68	3e
BIC	Betis fine sand, 0 to 5 percent slopes	1.0	44.32	3s
TOTALS		2.2	100%	3.0

Capability Legend

Increased Limitations and Hazards

Decreased Adaptability and Freedom of Choice Users

Land, Capability

								
	1	2	3	4	5	6	7	8
'Wild Life'	•	•	•	•	•	•	•	•
Forestry	•	•	•	•	•	•	•	
Limited	•	•	•	•	•	•	•	
Moderate	•	•	•	•	•	•		
Intense	•	•	•	•	•			
Limited	•	•	•	•				
Moderate	•	•	•					
Intense	•	•						
Very Intense	•							

Grazing Cultivation

(c) climatic limitations (e) susceptibility to erosion

(s) soil limitations within the rooting zone (w) excess of water