

134.43 acre County Rd 180, Anderson, TX 77830

Grimes County, Texas, 134.43 AC +/-

Boundary Lines are Approximate

**BRAZOS**
LAND COMPANY

0 1000 2000 3000 4000ft



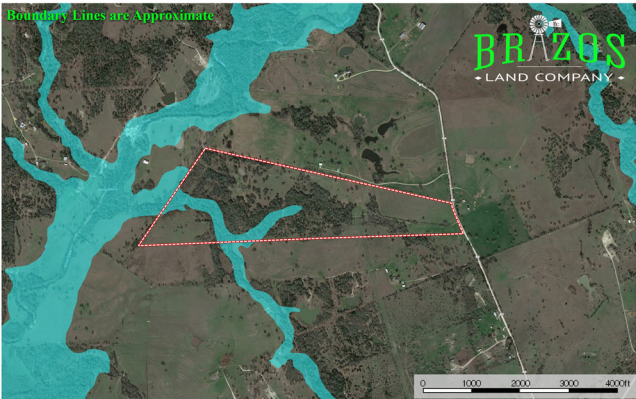
 Boundary

 The information contained herein was obtained from sources deemed to be reliable. Magnify Services makes no warranties or guarantees as to the completeness or accuracy thereof.

134.43 acre County Rd 180, Anderson, TX 77830

Grimes County, Texas, 134.43 AC +/-

Boundary Lines are Approximate



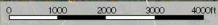
 Boundary  100 Year Floodplain  500 Year Floodplain  Floodway  Special  Unimproved or Not

134.43 acre County Rd 180, Anderson, TX 77830

Grimes County, Texas, 134.43 AC +/-

Boundary Lines are Approximate

**BRAZOS**
LAND COMPANY



 Boundary

 The information contained herein was obtained from sources deemed to be reliable. Magnolia Services makes no warranties or guarantees as to the completeness or accuracy thereof.

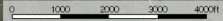
134.43 acre County Rd 180, Anderson, TX 77830

Grimes County, Texas, 134.43 AC +/-

Boundary Lines are Approximate



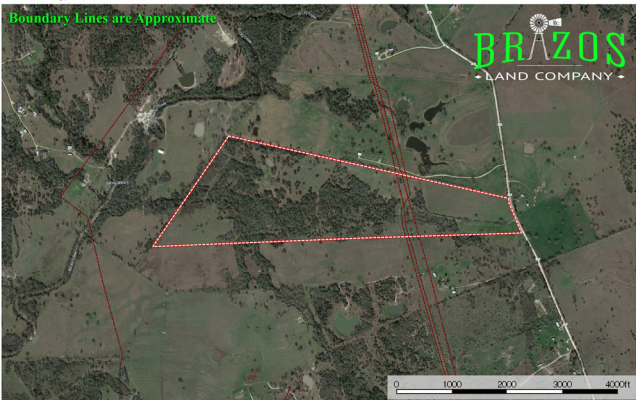
SOIL CODE	SOIL DESCRIPTION	ACRES	%	CAP
GvC	Greenville clay, 1 to 5 percent slopes	0.5	0.36	5a
EmC	Elmina loamy fine sand, 1 to 5 percent slopes	24.4	18.17	5a
FaC	Falbita fine sandy loam, 1 to 5 percent slopes	56.4	41.78	4b
GvD	Greenville clay, 5 to 8 percent slopes	14.9	11.02	4e
Na	Nahatche clay loam, frequently flooded	38.8	28.74	5w
TOTALS		134.9	100%	4.1



134.43 acre County Rd 180, Anderson, TX 77830

Grimes County, Texas, 134.43 AC +/-

Boundary Lines are Approximate



 Boundary  Crude Oil  Natural Gas  Other