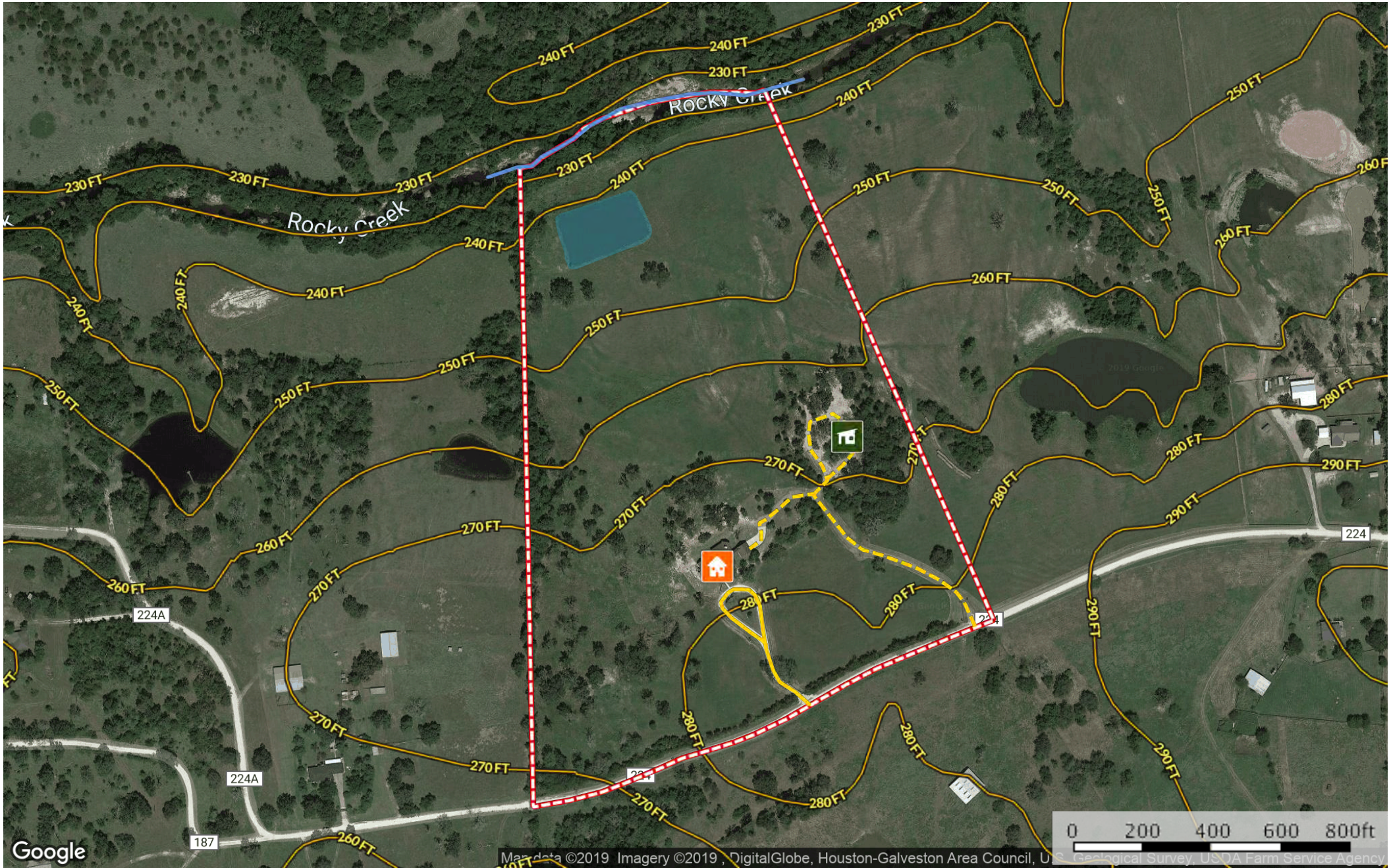
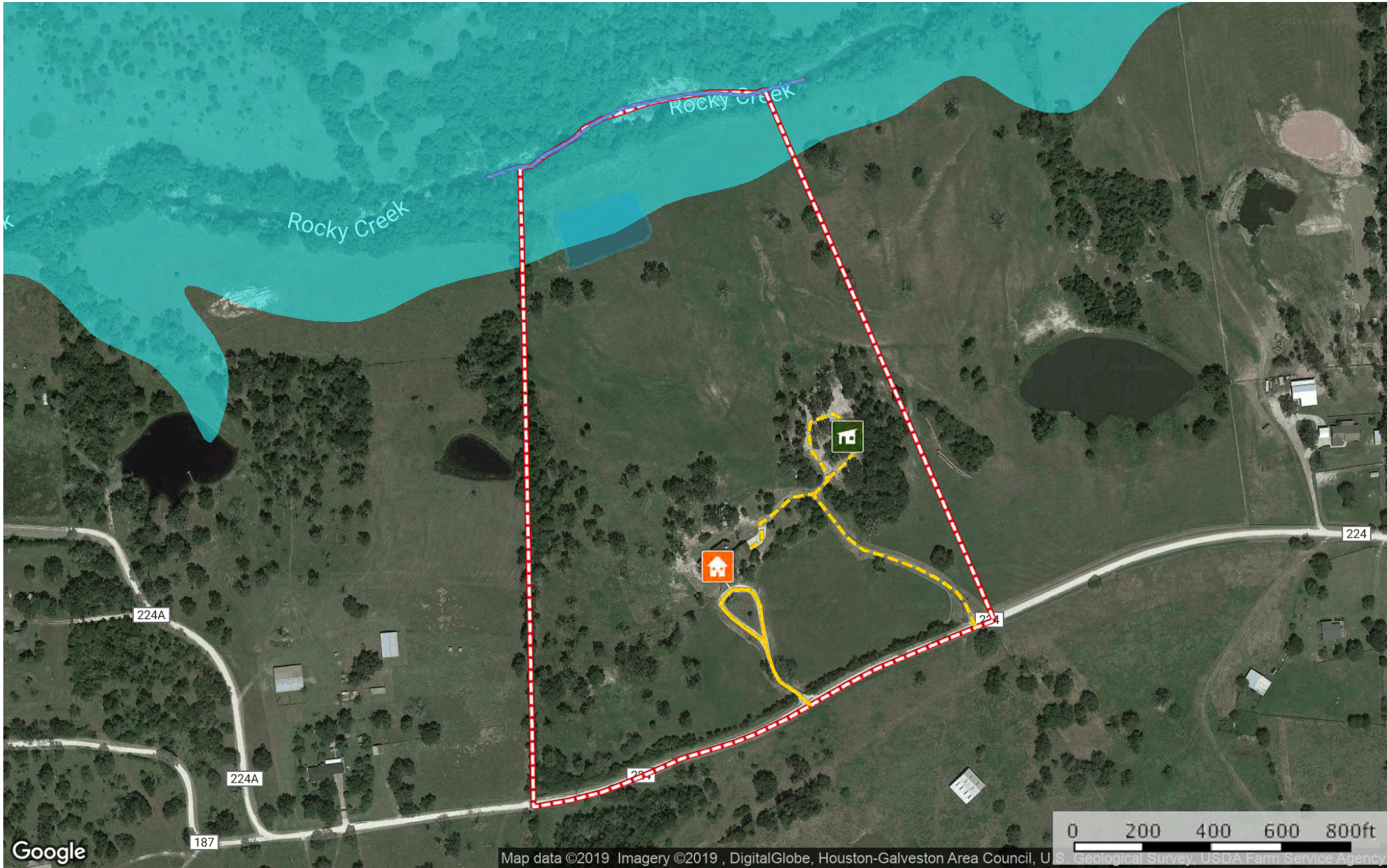


- House
- Shop
- River / Creek
- Primary Road
- Road / Trail
- Pond / Tank
- Boundary

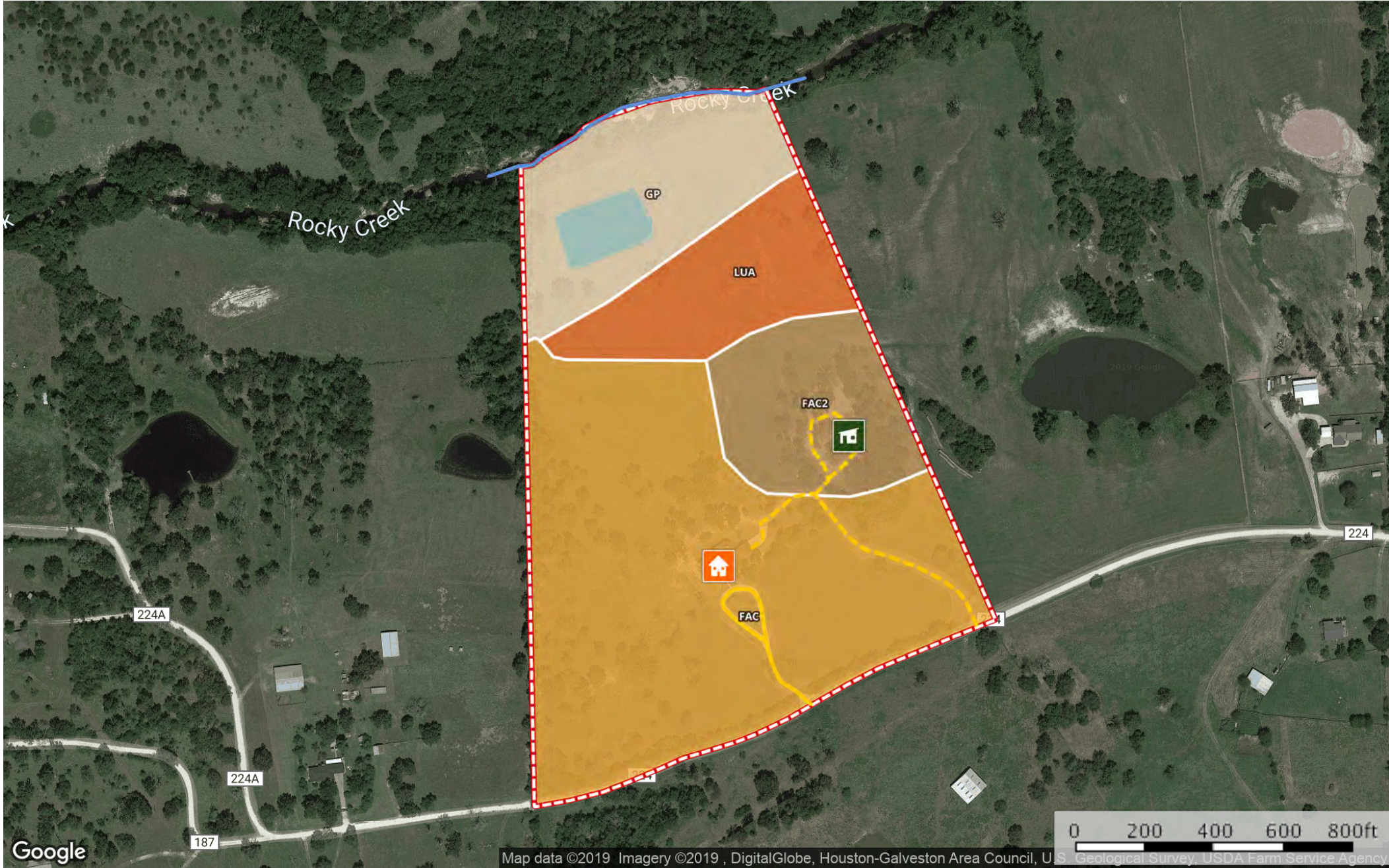


- House
- Shop
- River / Creek
- Primary Road
- Road / Trail
- Pond / Tank
- Boundary



- | | | | | | | | | | |
|---------|------------------------|---------------|--------------|--------------|-------------|----------|---------------------|---------------------|----------|
| House | Shop | River / Creek | Primary Road | Road / Trail | Pond / Tank | Boundary | 100 Year Floodplain | 500 Year Floodplain | Floodway |
| Special | Unmapped/ Not Included | | | | | | | | |

3174 County Rd 224 (32.77 Acres)
Grimes County, Texas, 32.77 AC +/-



- House
- Shop
- River / Creek
- Primary Road
- Road / Trail
- Pond / Tank
- Boundary

| Boundary 32.8 ac

SOIL CODE	SOIL DESCRIPTION	ACRES	%	CAP
FaC2	Falba fine sandy loam, 1 to 5 percent slopes, eroded	4.3	13.15	4e
LuA	Lufkin fine sandy loam, 0 to 1 percent slopes	4.1	12.54	3w
Gp	Gowker clay loam, frequently flooded	5.8	17.75	5w
FaC	Falba fine sandy loam, 1 to 5 percent slopes	18.5	56.56	4e
TOTALS		32.8	100%	4.05

Capability Legend

Increased Limitations and Hazards

Decreased Adaptability and Freedom of Choice Users

Land, Capability
Class(non-irrigated)



'Wild Life'

Forestry

Limited

Moderate

Intense

Limited

Moderate

Intense

Very Intense

Grazing Cultivation

(c) climatic limitations (e) susceptibility to erosion

(s) soil limitations within the rooting zone (w) excess of water