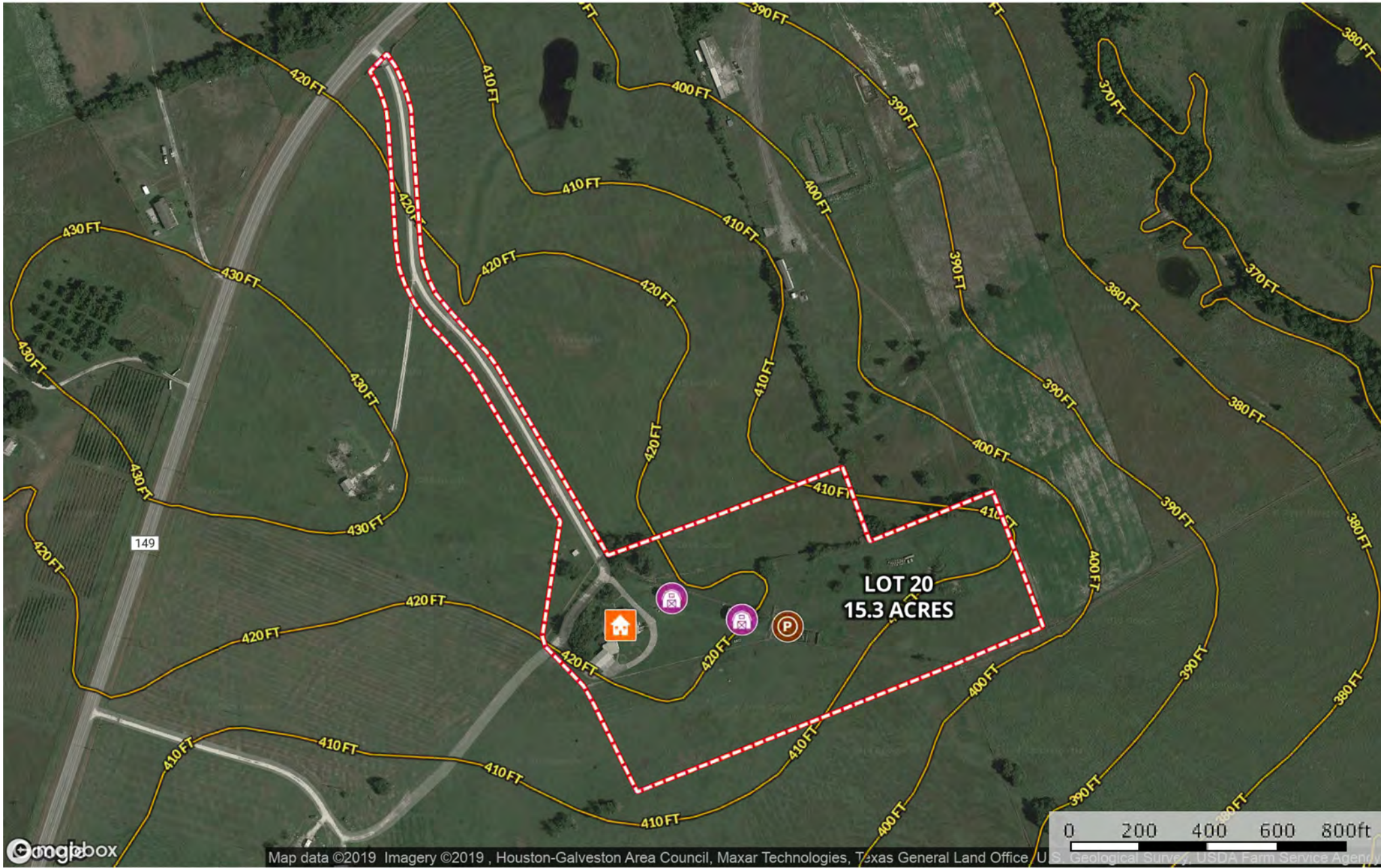


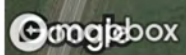
- Barn
- House
- Pens
- Lot 20



- Barn
- House
- Pens
- Lot 20



- Barn
- House
- Pens
- Lot 20
- 100 Year Floodplain
- 500 Year Floodplain
- Floodway
- Special
- Unmapped/Not Included



Map data ©2019 Imagery ©2019, Houston-Galveston Area Council, Maxar Technologies, Texas General Land Office, U.S. Geological Survey, USDA Farm Service Agency

- Barn
- House
- Pens
- Lot 20









SOIL CODE	SOIL DESCRIPTION	ACRES	%	CAP
CuC	Cuero clay loam, 1 to 5 percent slopes	8.6	55.89	3e
CrC	Crockett fine sandy loam, 1 to 5 percent slopes	6.6	43.16	4e
FrC	Frelsburg clay, 1 to 5 percent slopes	0.1	0.93	3e
TOTALS		15.3	100%	3.43

Capability Legend

Increased Limitations and Hazards

Decreased Adaptability and Freedom of Choice Users

Land, Capability

								
	1	2	3	4	5	6	7	8
'Wild Life'	•	•	•	•	•	•	•	•
Forestry	•	•	•	•	•	•	•	
Limited	•	•	•	•	•	•	•	
Moderate	•	•	•	•	•	•		
Intense	•	•	•	•	•			
Limited	•	•	•	•				
Moderate	•	•	•					
Intense	•	•						
Very Intense	•							

Grazing Cultivation

(c) climatic limitations (e) susceptibility to erosion

(s) soil limitations within the rooting zone (w) excess of water