



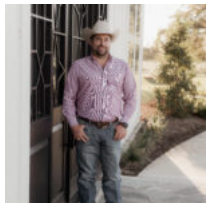
\$375,000

TRACT 5 FM 2819 17.55 ACRES

<https://brazoslandcompany.com>

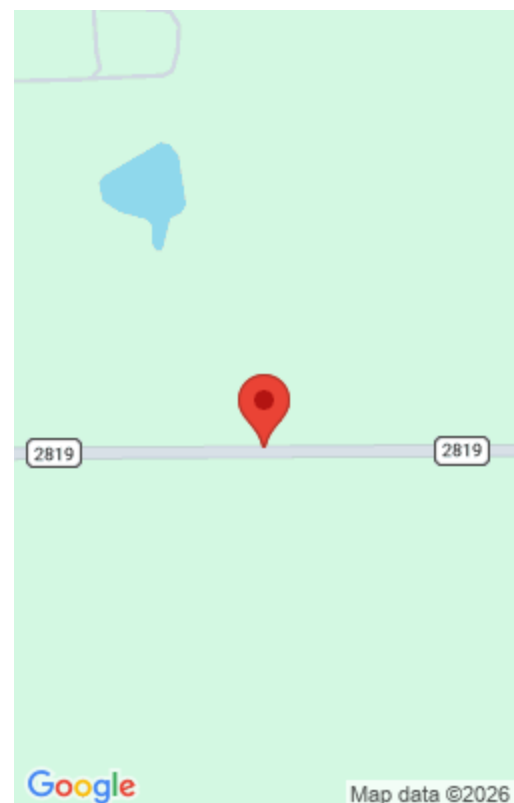
Nestled in the heart of Richards, Texas, this 17.5-acre tract offers the perfect blend of privacy and convenience. Cleared and ready for your vision, the land [...]

- Acreage: 10 or more Acres, Farm and Ranch without Home
- Active



Tanner Skinner

Brazos Land Company



Basic facts

Type: Acreage: 10 or more Acres, Farm and Ranch without Home

Status: Active

County: Grimes

Acres: 17.55

Feautures

Features: Electric Available, Improved Pastures, Mature Trees, Partially Fenced, Unrestricted

Directions

Directions: From Anderson take 1774/2819 East go 1.2 miles and keep on FM 2819. Continue 8.5 miles property is on the north.

View On Map

Map View:

Agent Compensation

Buyer's Agent Commission: 3%

