

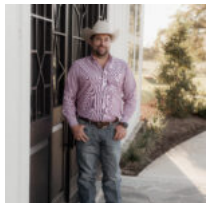


\$225,000

TRACT 4 FM 2819 11 ACRES

<https://brazoslandcompany.com>

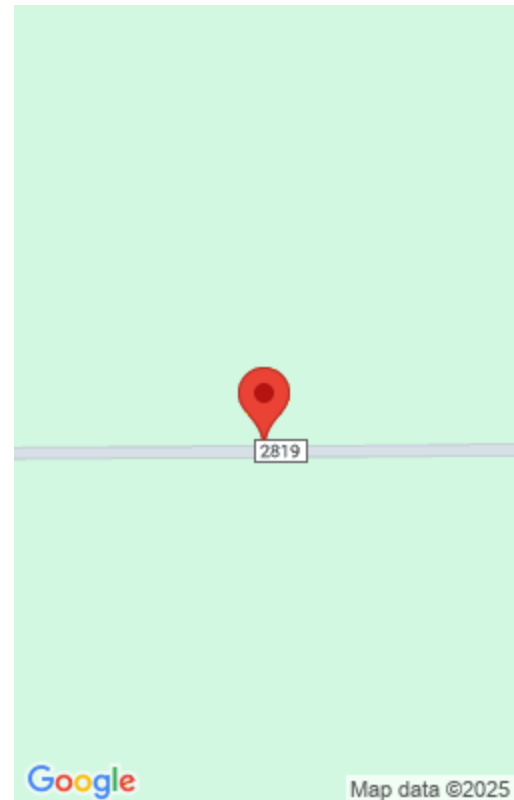
This 11-acre property, located on a paved road in Richards, Texas, offers a perfect combination of rural living and modern convenience. With improved pasture ready for [...]



Tanner Skinner

Brazos Land Company

- Acreage: 10 or more Acres, Farm and Ranch without Home
- Active



Basic facts

Type: Acreage: 10 or more Acres, Farm and Ranch without Home

Status: Active

County: Grimes

Acres: 11

Feautures

Features: Distant Views, Electric Available, Improved Pastures, Partially Fenced, Unrestricted

Directions

Directions: From Anderson take 1774/2819 East go 1.2 miles and keep on FM 2819. Continue 8.5 miles property is on the north.

View On Map

Map View:

Agent Compensation

Buyer's Agent Commission: 3%

