



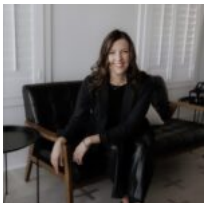
\$120,000

- Acreage: 10 or more Acres, Farm and Ranch without Home
- Sold

TRACT 3 FM 2745, KOSSE

<https://brazoslandcompany.com>

Located between Marlin and Kosse in Falls County, this 10+ acre tract lies in open landscape with big sky views. Level topography and sandy loam soil [...]



Lauren Stuart

Brazos Land Company

Basic facts

Type: Acreage: 10 or more Acres, Farm and Ranch without Home

County: Falls

School District: Marlin ISD

Status: Sold

Acres: 10



Features

Features: Improved Pastures, Paved Frontage

Directions

Directions: TBD

View On Map

Map View:

