

Boundary Lines are Approximate



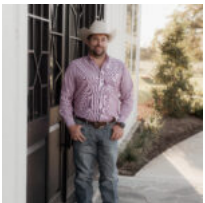
\$340,000

- Acreage: 10 or more Acres, Farm and Ranch without Home
- Active

TRACT 3 CR 124 17 ACRES

<https://brazoslandcompany.com>

This 17-acre tract offers the perfect blend of cleared land and wooded areas, all framed by breathtaking views that make this property truly special. The open [...]



Tanner Skinner

Brazos Land Company

Basic facts

Type: Acreage: 10 or more Acres, Farm and Ranch without Home

County: Grimes

School District: lola

Status: Active

Acres: 17



Features

Features: Abundant Wildlife, Barbed Wire Fence, Distant Views, Electric Available, Improved Pastures, Mature Hardwood Trees, Mature Trees, Partially Fenced, Partially Wooded, Unrestricted

Directions

Directions: From Navasota take HWY 90 north for 22 miles. Turn left on FM 39 and go 7.5 miles to CR 128. Turn right on CR 128 go .4 miles to CR 126 and turn right. Go .4 miles and turn left onto CR 124. Go 1.1 miles to the property on the right.

View On Map

Map View:

Agent Compensation

Buyer's Agent Commission: 3%

