

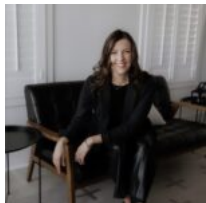


\$100,000

TRACT 2 FM 2745, KOSSE, TX

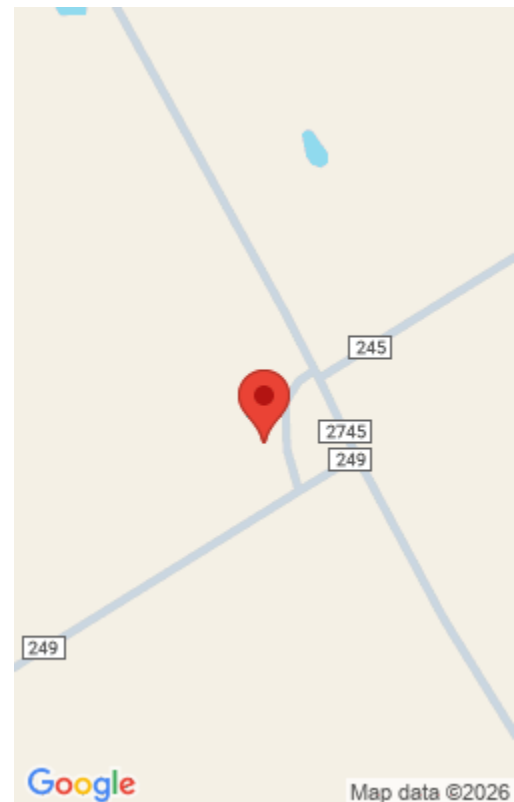
<https://brazoslandcompany.com>

Set in the wide-open countryside of Falls County, this 10+ acre property offers expansive big-sky views and peaceful rural surroundings between Marlin and Kosse. The land [...]



Lauren Stuart

Brazos Land Company



Basic facts

Type: Acreage or Lot: 0 to 10 Acres, Acreage: 10 or more Acres
County: Falls

Status: Active
Acres: 10.01



Directions

Directions: Located .5 miles south of HWY 7 on FM 2745.



View On Map

Map View:



Agent Compensation

Buyer's Agent Commission: 3%

