



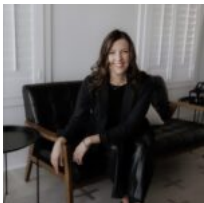
\$120,000.00

TRACT 2 COUNTY RD 249, KOSSE, TX 76653

<https://brazoslandcompany.com>

Located between Marlin and Kosse in Falls County, this 10+ acre tract lies in open landscape with big sky views. Level topography and sandy loam soil [...]

- Acreage: 10 or more Acres, Farm and Ranch without Home
- Active



Lauren Stuart

Brazos Land Company

Basic facts

Type: Acreage: 10 or more Acres, Farm and Ranch without Home

County: Falls

School District: Marlin ISD

Status: Active

Acres: 10



Directions

Directions: From SH-7, drive .5 miles south and turn right onto County Rd 249. The property will be on your left.

View on map

MapRight IFrame: 6e8c9f525a3703e0755243e1a6eb8b88

