

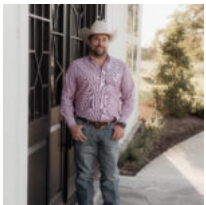


\$500,000

TRACT 1 LONE STAR RD NAVASOTA, TX

<https://brazoslandcompany.com>

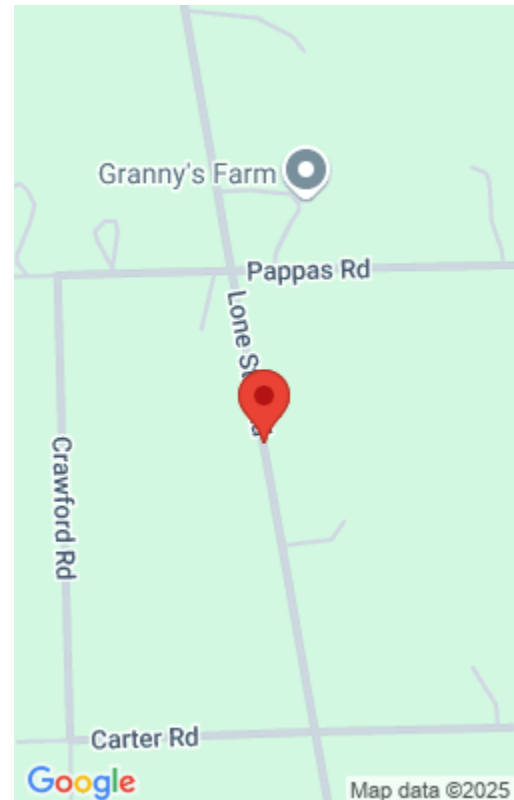
This 12.5-acre wooded tract offers a rare opportunity to create your dream property, with paved road frontage for easy access and close proximity to Highway 249, [...]



Tanner Skinner

Brazos Land Company

- Acreage: 10 or more Acres, Farm and Ranch without Home, Residential
- Active



Basic facts

Type: Acreage: 10 or more Acres, Farm and Ranch without Home, Residential

Status: Active

County: Grimes

Acres: 12.5

Feautures

Features: Abundant Wildlife, Electric Available, Mature Hardwood Trees, Mature Trees, Paved Frontage, Unrestricted

Directions

Directions: From Navasota take 105 East 6.7 Miles. Take Texas 249 on the left go 5.2 miles. Take the exit for CR 304. Go South 3.5 miles on CR 304 it will turn into CR 302. Turn left on Lone Star Rd go .25 miles property is on the right.

View On Map

Map View:

