

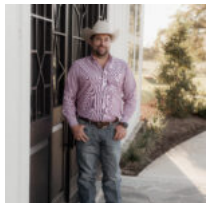


\$70,000

TBD MADISON ST BEDIAS, TX 77831

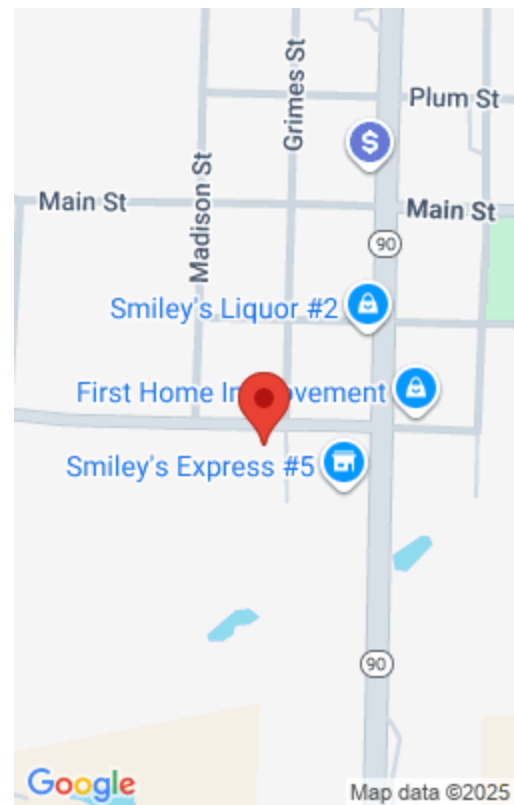
<https://brazoslandcompany.com>

Now available in Bedia - two lots combined to create a larger homesite with extra space and flexibility. This property offers plenty of room for your [...]



Tanner Skinner

Brazos Land Company



Basic facts

Type: Acreage or Lot: 0 to 10 Acres

County: Grimes

Status: Active

Acres: .3

Feautures

Features: City Water, Mature Trees, Public Water

Directions

Directions: From Navasota take HWY 90 north for 31 miles. Turn left onto FM 1696, in 400ft the property is on the right.

View On Map

Map View:

Agent Compensation

Buyer's Agent Commission: 3%

