



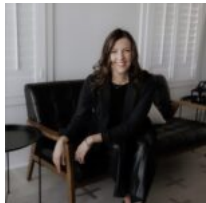
**\$790,000**

**98.94+/- ACRES FM 413 & CR 250, KOSSE, TX 76653**

<https://brazoslandcompany.com>

- Acreage: 10 or more Acres, Farm and Ranch without Home
- Active

Stunning acreage tract located southwest of Kosse in Falls, County. Fronting FM 413 and CR 250, the property offers over 5,000' of road frontage with rolling [...]



**Lauren Stuart**

Brazos Land Company

## Basic facts

**Type:** Acreage: 10 or more Acres, Farm and Ranch without Home

**County:** Falls

**School District:** Marlin ISD

**Status:** Active

**Acres:** 98.94





## Feautures

**Features:** Abundant Wildlife, Fishing, Improved Pastures, Mature Trees, Partially Wooded, Pond/Tank



## View On Map

**Map View:**



## Agent Compensation

**Buyer's Agent Commission:** 3%

