



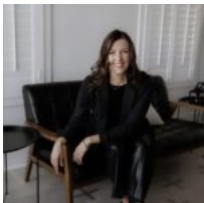
\$390,000

## TRACT 8 FM 2745, KOSSE, TX 76653

<https://brazoslandcompany.com>

Exceptional 30 acre tract located between Marlin and Kosse on Farm to Market 2745. Offering appropriately 1700 feet of road frontage the property is half cleared [...]

- Acreage: 10 or more Acres, Farm and Ranch without Home
- Active



**Lauren Stuart**

Brazos Land Company

### Basic facts

**Type:** Acreage: 10 or more Acres, Farm and Ranch without Home

**County:** Falls

**School District:** Marlin ISD

**Status:** Active

**Acres:** 30



---

## Features

**Features:** Co-op Water, Improved Pastures, Mature Hardwood Trees, Mature Trees, Paved Frontage

---

## Directions

**Directions:** Located on FM 2745 one mile south of HWY 7.

---

## View On Map

**Map View:**

