



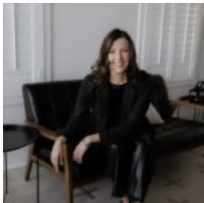
\$575,000.00

CHECKPOINT HARLEY- 7774 FM 1486, RICHARDS, TX 77873

<https://brazoslandcompany.com>

- Acreage: 10 or more Acres, Farm and Ranch with Home, Homes on 1 to 10 Acres
- Active

Calling all horse lovers, weekenders, and ranchette dreamers, this beautiful 22+/- acre tract is a must see! Located on FM 1486 with gently rolling hayfields and [...]



Lauren Stuart

Brazos Land Company

Basic facts

Type: Acreage: 10 or more Acres, Farm and Ranch with Home, Homes on 1 to 10 Acres

County: Grimes

Year built: 2007

Status: Active

Acres: 22

School District: Richards ISD



Features

Features: Additional Storage, Aerobic Septic System, Electric Available, Guest House, Improved Pastures, Partially Fenced, Unrestricted

Directions

Directions: From Shiro, take FM 1486 south 5 miles to the property on the right. The property is located .8 of a mile north of the intersection of FM 149 and FM 1486. You'll enter through the gate "Mexican Hill Ranch".

View on map

MapRight IFrame: b901c3f856a8437d71c7771682f1be1a

