

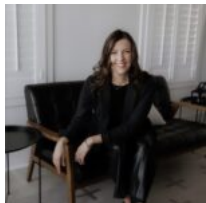
\$63,000

6705 ATAKAPAN TRAIL, BEDIAS, TX 77831

<https://brazoslandcompany.com>

- Acreage or Lot: 0 to 10 Acres
- Active

Build your future in the beautifully developed Brushwood Crossing community! This spacious 1 acre lot is situated within the highly rated Anderson-Shiro ISD and features paved [...]



Lauren Stuart

Brazos Land Company

Basic facts

Type: Acreage or Lot: 0 to 10 Acres

County: Grimes

School District: Anderson-Shiro ISD

Status: Active

Acres: 1



Feautures

Features: Electric Available, Mature Trees, Paved Frontage

Directions

Directions: From the 4-way intersection in Roans Prairie, head east towards Huntsville on Highway 30. Continue on Highway 30 for approximately 6.5 miles and then turn left onto FM 2620. Follow FM 2620 for approximately 1 mile and the entrance to Brushwood Crossing will be on the left.

View On Map

Map View:

Agent Compensation

Buyer's Agent Commission: 3%

