



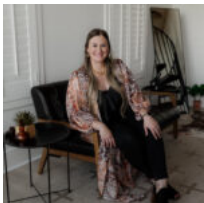
\$725,000

5292 HORSESHOE DR

<https://brazoslandcompany.com>

This stunning barndominium is country living done right! It sits on 6 ag-exempt, fully fenced acres in desirable Anderson. With 2,648 sq ft, 4 beds, and [...]

- 4 beds
- 2 baths
- Homes on 1 to 10 Acres, Residential
- Active



Kristin McCandless

Brazos Land Company

Basic facts



Type: Homes on 1 to 10 Acres, Residential

County: Grimes

Home Square Feet: 2648

Floors: 2 floors

Bathrooms: 2 baths

School District: Anderson-Shiro ISD

Status: Active

Acres: 6

Year built: 2021

Bedrooms: 4 beds

Half baths: 1 half bath

Feautures

Amenities: Dishwasher, Gas Range, Oven, Walk-In Closets

Features: Aerobic Septic System, Air conditioning, Covered Patio, Electric Available, Fishing, Heating, High-Speed Internet, Mature Hardwood Trees, Perimeter Fenced, Pond/Tank, Shop, Water well

Building Details

Floor covering: Concrete, Linoleum/vinyl

Roof: Metal

Exterior material: Metal

Directions

Directions: From Anderson, turn right onto FM-149. In 4.5 miles turn left onto CR 220. Turn right onto Horseshoe Dr. Destination is on right.

View On Map

Map View: <iframe loading='lazy' frameBorder='0' height='520px' width='100%' src='https://id.land/maps/09d9c121680a6acd0d4eaf894585fe6e/embed'></iframe>

Rooms



Room type

Primary

Bedroom

Bedroom

Bedroom

