



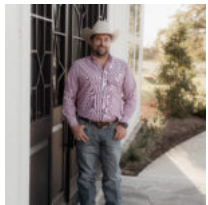
\$191,450

5.47 ACRES CR 212 ANDERSON, TX

<https://brazoslandcompany.com>

- Acreage or Lot: 0 to 10 Acres, Residential
- Under Contract

Discover the possibilities on this beautiful 5-acre tract located in the sought-after Richards ISD. With a mix of open space and scattered trees, this property offers [...]



Tanner Skinner

Brazos Land Company

Basic facts

Type: Acreage or Lot: 0 to 10 Acres, Residential

County: Grimes

School District: Richards ISD

Status: Under Contract

Acres: 5.47



Feautures

Features: Electric Available, Mature Hardwood Trees, Mature Trees, Partially Wooded, Unrestricted

Directions

Directions: From Navasota take SH 90 towards Anderson for 9.4 miles. Take a slight right turn onto FM 1774, go 1.3 miles and turn left onto FM 2819. Go 3.9 miles and turn right of CR 214. Go 3.6 miles and turn left onto CR 212, proceed 1 mile to property on the right.

View On Map

Map View:

Agent Compensation

Buyer's Agent Commission: 3%

