

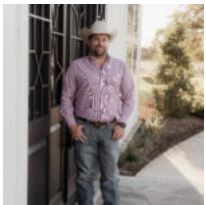
\$129,900

5745 COUNTY RD 302, NAVASOTA, TX 77868

<https://brazoslandcompany.com>

- Acreage or Lot: 0 to 10 Acres
- Active

Private, blank canvas ready for your touch to make it home!
Tucked away off of CR 302 this 3 acre wooded tract is ready to be
[...]



Tanner Skinner

Brazos Land Company

Basic facts

Type: Acreage or Lot: 0 to 10 Acres

County: Grimes

Status: Active

Acres: 3



Feautures

Features: Mature Trees, Partially Wooded, Unrestricted, Wooded

Directions

Directions: From Navasota take 105 East for 6.7 miles, keep left onto SH-249. Go 5.2 miles and take the exit for CR-304. Go South on CR-304 for 3.5 miles. Merge onto CR-302 to the right. Go around the curve on 302 and destination is on the right in .3 miles.

View On Map

Map View:

