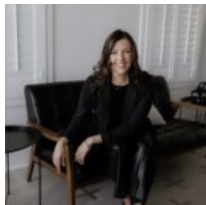




\$792,000

<https://brazoslandcompany.com>

40± Acres | FM 2620 | Anderson-Shiro ISD Exceptional 40-acre tract fronting FM 2620 in the highly regarded Anderson-Shiro ISD. This well-managed property offers an ideal [...]



Lauren Stuart

Brazos Land Company



Basic facts

Type: Acreage: 10 or more Acres, Farm and Ranch without Home

Status: Active

County: Grimes

Acres: 39.885

School District: Anderson-Shiro ISD

Feautures

Features: Co-op Water, Electric Available, High-Speed Internet, Mature Trees, Partially Wooded, Unrestricted

Directions

Directions: Located 1 mile north of the intersection of Hwy 30 and FM 2620.

View On Map

Map View:

Agent Compensation

Buyer's Agent Commission: 3%

