

Boundary Lines are Approximate



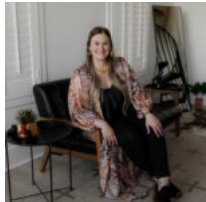
**\$350,000**

## **15166 MARTIN DR**

<https://brazoslandcompany.com>

UNRESTRICTED 2.68 ACRES with endless potential in the rapidly growing Conroe area! Whether you're looking to build a commercial venture, establish a multi-generational setup, or enjoy [...]

- 2 beds
- 2 baths
- Homes on 1 to 10 Acres, Residential
- Active



### **Kristin McCandless**

Brazos Land Company

## **Basic facts**



**Type:** Homes on 1 to 10 Acres, Residential  
**County:** Montgomery  
**Home Square Feet:** 1096  
**Floors:** 1 floor  
**Bathrooms:** 2 baths

**Status:** Active  
**Acres:** 2.68  
**Year built:** 1972  
**Bedrooms:** 2 beds  
**School District:** Conroe

Features

**Amenities:** Built-in Microwave, Electric Range, Walk-In Closets, Window Unit  
**Features:** Aerobic Septic System, Air conditioning, Carport, City Water, Covered Patio, Electric Available, Heating, High-Speed Internet, Paved Frontage, Perimeter Fenced, Unrestricted

Building Details

**Floor covering:** Carpet, Linoleum/vinyl  
**Roof:** Metal  
**Exterior material:** Vinyl Siding  
**Parking:** Carport

Directions

**Directions:** From I-45, head East on FM 242. Turn right onto FM 1314. Turn right onto Calhoun Rd. Turn right onto Vans Ln. Turn left onto Martin Dr. Property is on the left at the curve.

