

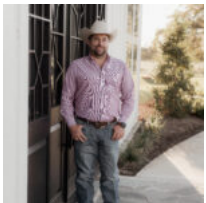


**\$299,000**

## **15 ACRES FM 391 HEARNE, TX**

<https://brazoslandcompany.com>

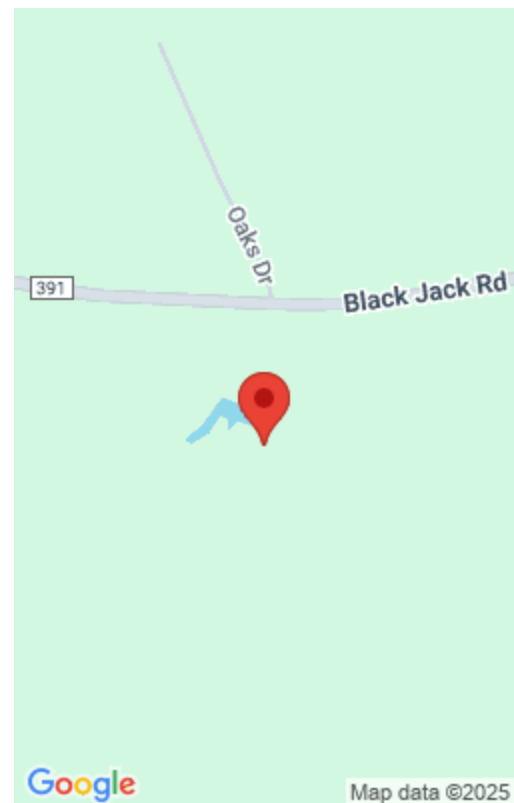
Located in Robertson County, this 15-acre property offers a beautiful balance of open pasture and mature hardwoods, making it ideal for a variety of uses including [...]



### **Tanner Skinner**

Brazos Land Company

- Acreage: 10 or more Acres, Farm and Ranch without Home
- Under Contract



---

## Basic facts

**Type:** Acreage: 10 or more Acres, Farm and Ranch without Home

**Status:** Under Contract

**County:** Robertson

**Acres:** 15

**School District:** Hearne

---

## Feautures

**Features:** Abundant Wildlife, Barbed Wire Fence, Distant Views, Electric Available, Mature Hardwood Trees, Mature Trees, Paved Frontage, Pond/Tank, Unrestricted

---

## Directions

**Directions:** From Hearne Take FM 391 East. Go 2.2 miles to the destination on your right.

---

## View On Map

**Map View:**

---

## Agent Compensation

**Buyer's Agent Commission:** 3%

