



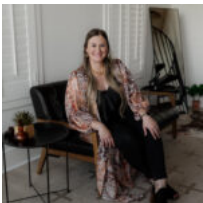
\$425,000.00

121 BERMUDA CIR, MONTGOMERY, TX 77356

<https://brazoslandcompany.com>

Located in the prestigious community of Bentwater, this custom built home will blow you away with thoughtful design and excellent features. The open floor plan and [...]

- 3 beds
- 2 baths
- Residential
- Active



Kristin McCandless

Brazos Land Company

Basic facts



Type: Residential

County: Montgomery

Home Square Feet: 2432

Floors: 1 floor

Bathrooms: 2 baths

School District: Montgomery

Status: Active

Acres: .165

Year built: 2019

Bedrooms: 3 beds

Half baths: 1 half bath

Feautures

Features: Air conditioning, City Sewer, City Water, Community Pavilion, Community Pool, Covered Patio, Heating, High-Speed Internet, Outdoor Kitchen

Directions

Directions: From I-45, exit to FM 1097 West. Head West for about 8 miles. Turn left onto Bentwater Drive. Turn right onto Monterrey Rd E. Turn right onto Bermuda Cir. Home is on left.

View on map

MapRight IFrame:

