



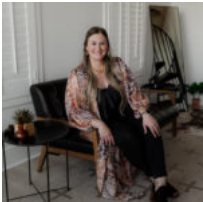
\$1,400

11617 E HAMMON

<https://brazoslandcompany.com>

This charming single-story home showcases an open floor plan and beautiful upgrades throughout. The kitchen features elegant granite countertops, soft-close cabinetry and drawers, a walk-in pantry, [...]

- 3 beds
- 2 baths
- Rental
- Active



Kristin McCandless

Brazos Land Company

Basic facts



Type: Rental

County: Montgomery

Home Square Feet: 1000

Floors: 1 floor

Bathrooms: 2 baths

Status: Active

Acres: 0.0482

Year built: 2021

Bedrooms: 3 beds

School District: Montgomery ISD

Directions

Directions: From Montgomery, go East on HWY 105. Turn right into Lake Conroe Village subdivision. Turn left onto E Alderson. Turn right onto Eastchase St. Turn right onto E Hammon. House is on left.

Rooms

Room type	Dimensions
Primary	12x11
Bedroom	10x10
Bedroom	10x10

