



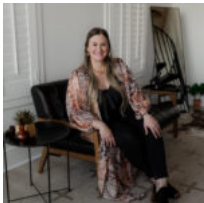
\$275,000

**11076 COUNTY ROAD 215, ANDERSON, TX
77830**

<https://brazoslandcompany.com>

Nestled on 2 peaceful acres, this charming Champion Home offers over 1,800 sq. ft. of thoughtfully designed living space. The open floor plan includes 3 bedrooms, [...]

- 3 beds
- 2 baths
- Homes on 1 to 10 Acres, Residential
- Sold



Kristin McCandless

Brazos Land Company

Basic facts



Type: Homes on 1 to 10 Acres, Residential

County: Grimes

Home Square Feet: 1820

Floors: 1 floor

Bathrooms: 2 baths

School District: Anderson-Shiro ISD

Status: Sold

Acres: 2

Year built: 2022

Bedrooms: 3 beds

Half baths: 1 half bath

Feautures

Features: Barn, Covered Patio, Electric Available, Mature Trees, Partially Wooded, Perimeter Fenced

Building Details

Floor covering: Laminate

Roof: Composition

Exterior material: Vinyl Siding

Directions

Directions: From Anderson town center, take FM 1774 S towards Plantersville. Turn left onto CR 215. In 5.6 miles property will be on right.

View On Map

Map View: <iframe loading='lazy' frameBorder='0' height='520px' width='100%' src='https://id.land/maps/d2f78c37c25de457b6679da6a5f824d0/embed'></iframe>

Rooms



Room type	Dimensions
Primary	14x12
Bedroom	14x10
Bedroom	14x10
Flex Room	10x10

Floor Plans

