

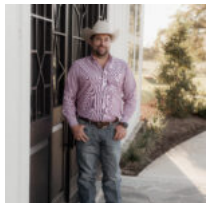


**\$290,000**

## 11 ACRES FM 2819

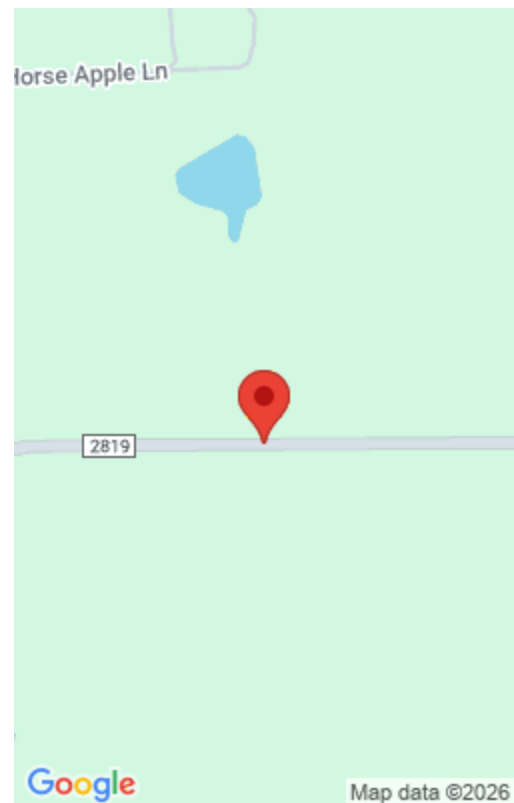
<https://brazoslandcompany.com>

11-acre tract on FM 2819 offering paved road frontage, a scenic pond, and a cleared build-ready layout. This unrestricted property provides full flexibility for your plans—build [...]



### Tanner Skinner

Brazos Land Company



---

## Basic facts

**Type:** Acreage: 10 or more Acres

**County:** Grimes

**School District:** Richards ISD

**Status:** Active

**Acres:** 11

---

## Feautures

**Features:** Distant Views, Electric Available, Improved Pastures, Pond/Tank, Unrestricted

---

## Directions

**Directions:** From Anderson take 1774/2819 East go 1.2 miles and keep on FM 2819. Continue 8.5 miles property is on the north.

---

## View On Map

**Map View:**

---

## Agent Compensation

**Buyer's Agent Commission:** 3%

