



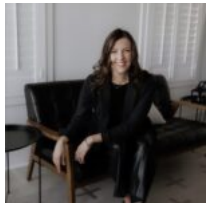
**\$63,000**

**10677 BRUSHWOOD CUTOFF, BEDIAS, TX  
77831**

<https://brazoslandcompany.com>

- Acreage or Lot: 0 to 10 Acres
- Active

Build your future in the beautifully developed Brushwood Crossing community! This spacious 1 acre lot is situated within the highly rated Anderson-Shiro ISD and features paved [...]



**Lauren Stuart**

Brazos Land Company

---

## Basic facts

**Type:** Acreage or Lot: 0 to 10 Acres

**County:** Grimes

**School District:** Anderson-Shiro ISD

**Status:** Active

**Acres:** 1



---

## Feautures

**Features:** Electric Available, Mature Trees, Paved Frontage

---

## Directions

**Directions:** From the 4-way intersection in Roans Prairie, head east towards Huntsville on Highway 30. Continue on Highway 30 for approximately 6.5 miles and then turn left onto FM 2620. Follow FM 2620 for approximately 1 mile and the entrance to Brushwood Crossing will be on the left.

---

## View On Map

**Map View:**

---

## Agent Compensation

**Buyer's Agent Commission:** 3%

